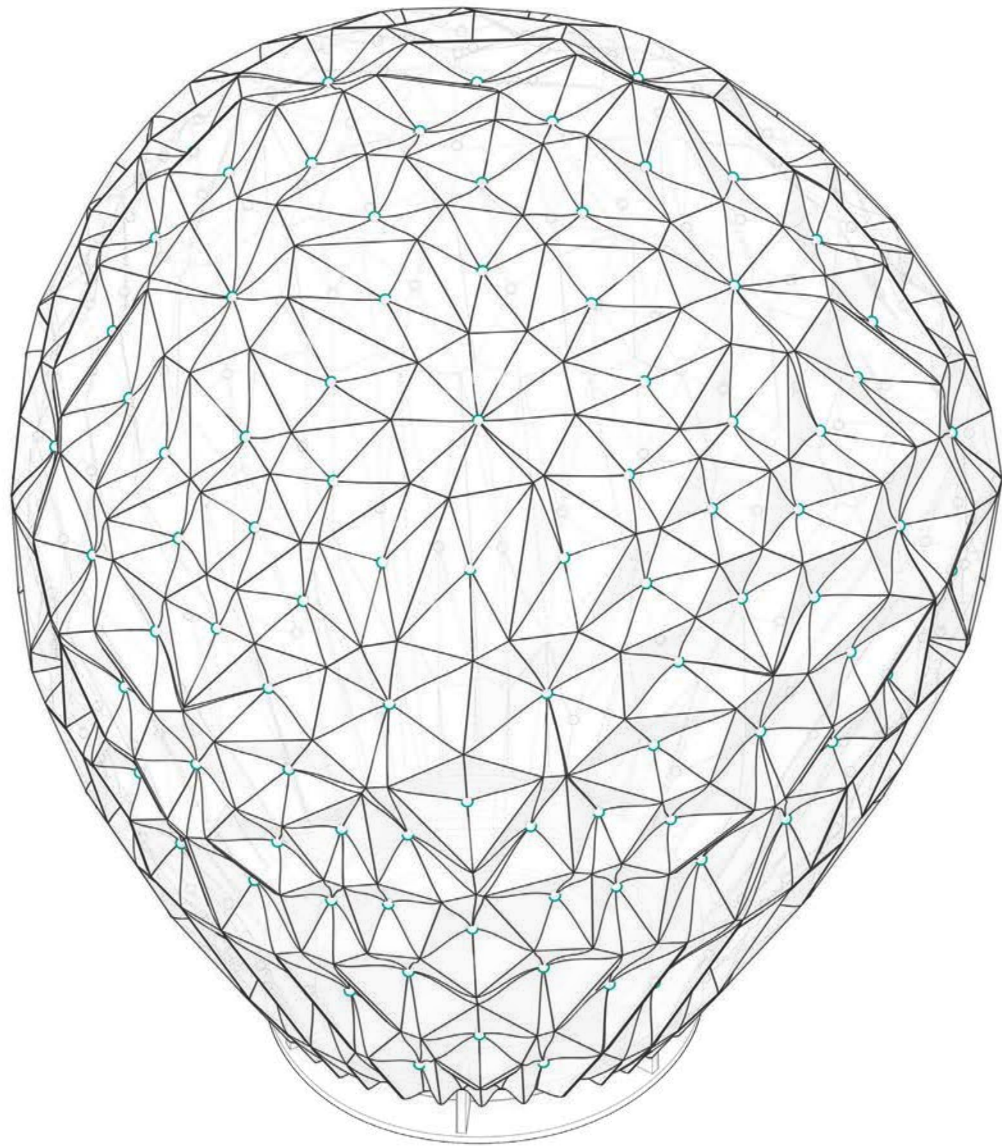


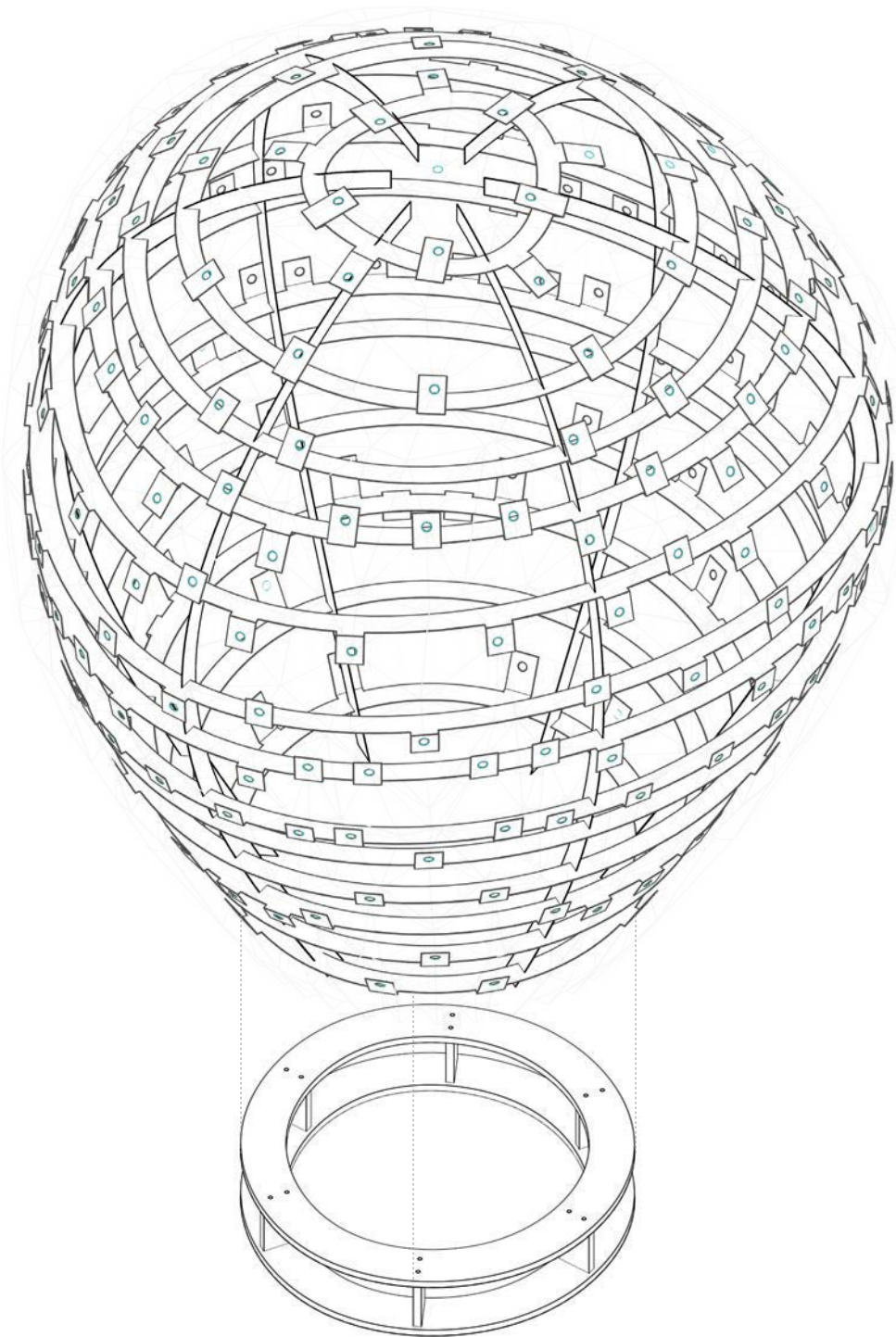


KALEIDOSCOPIC MONOLITH


SUTD INSTALLATION
ILIGHT FESTIVAL 2017

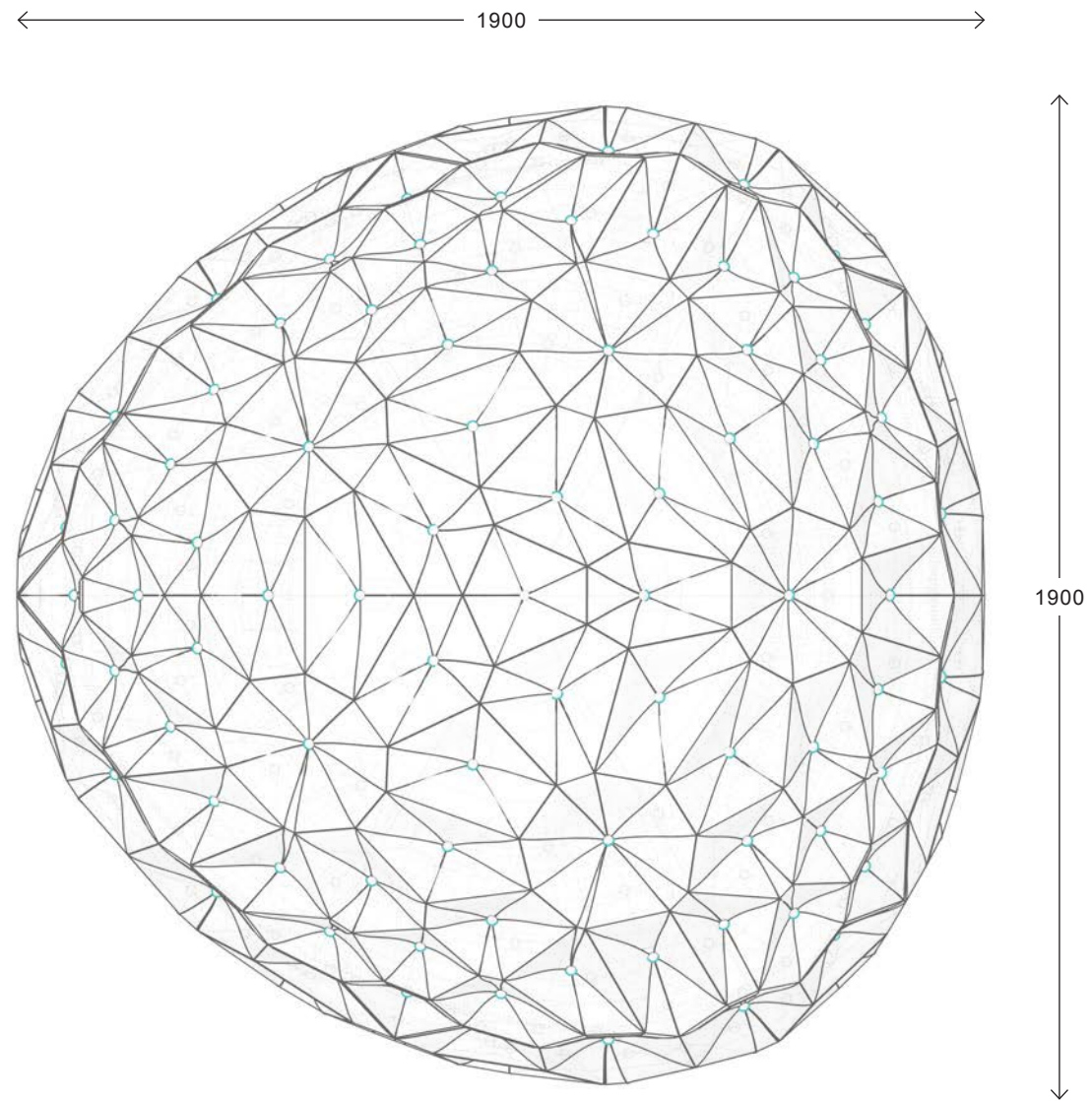


1 OVERALL AXONOMETRIC - SKIN ON
NO SCALE

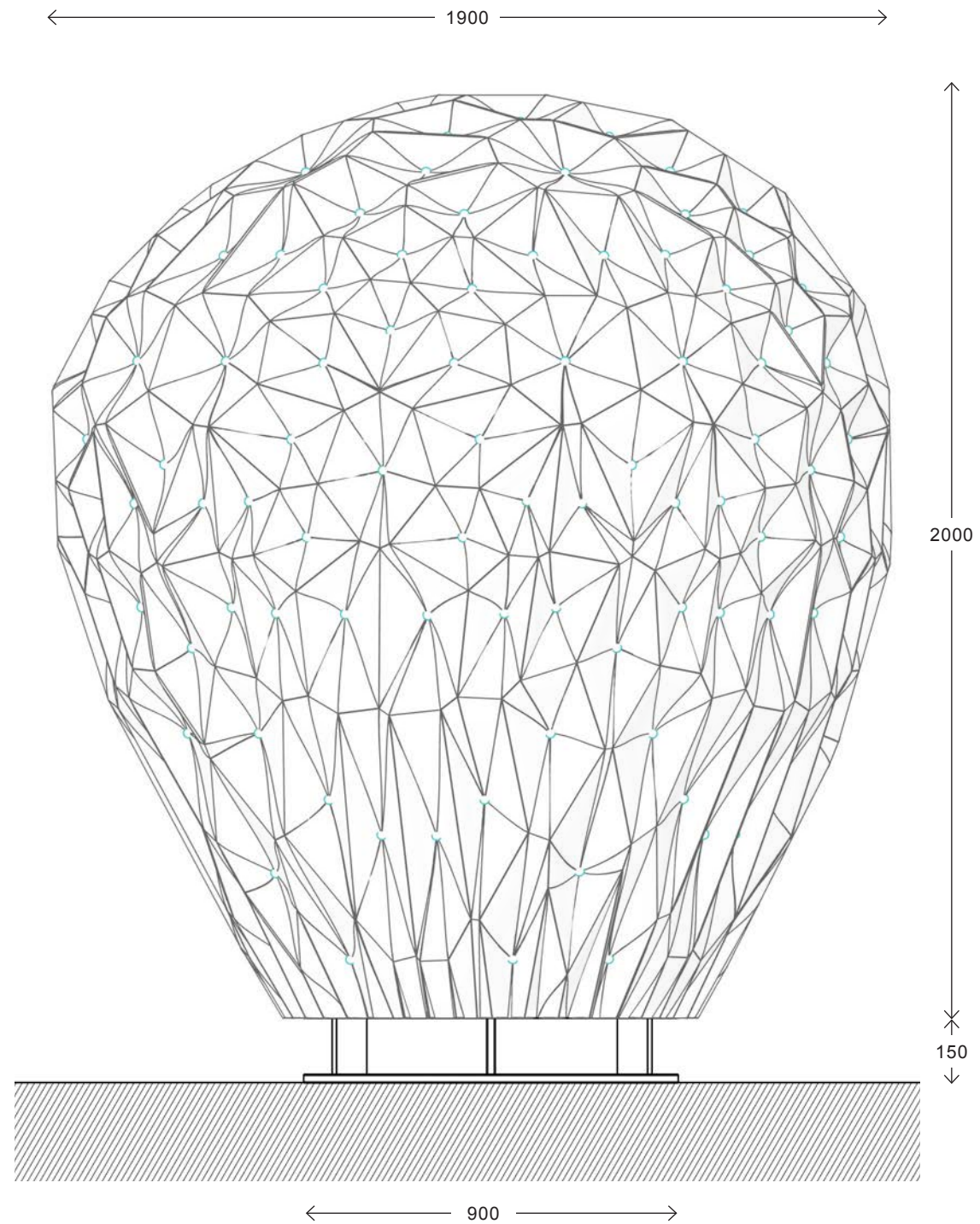


2 OVERALL AXONOMETRIC - SKIN OFF (RIBS)
NO SCALE


DESIGN BY :	
 SINGAPORE UNIVERSITY OF TECHNOLOGY AND DESIGN Established in collaboration with MIT	
<small>SINGAPORE UNIVERSITY OF TECHNOLOGY AND DESIGN 8 SOMAPAH ROAD SINGAPORE 487372 TEL: (65) 6302 9600 WEB: www.sutd.edu.sg</small>	
PROJECT :	
SUTD-ILIGHT INSTALLATION ILIGHT FESTIVAL 2017 SINGAPORE	
DRAWING NAME :	SCALE
ISOMETRIC VIEW (W/ & W/O SKIN)	-
	1

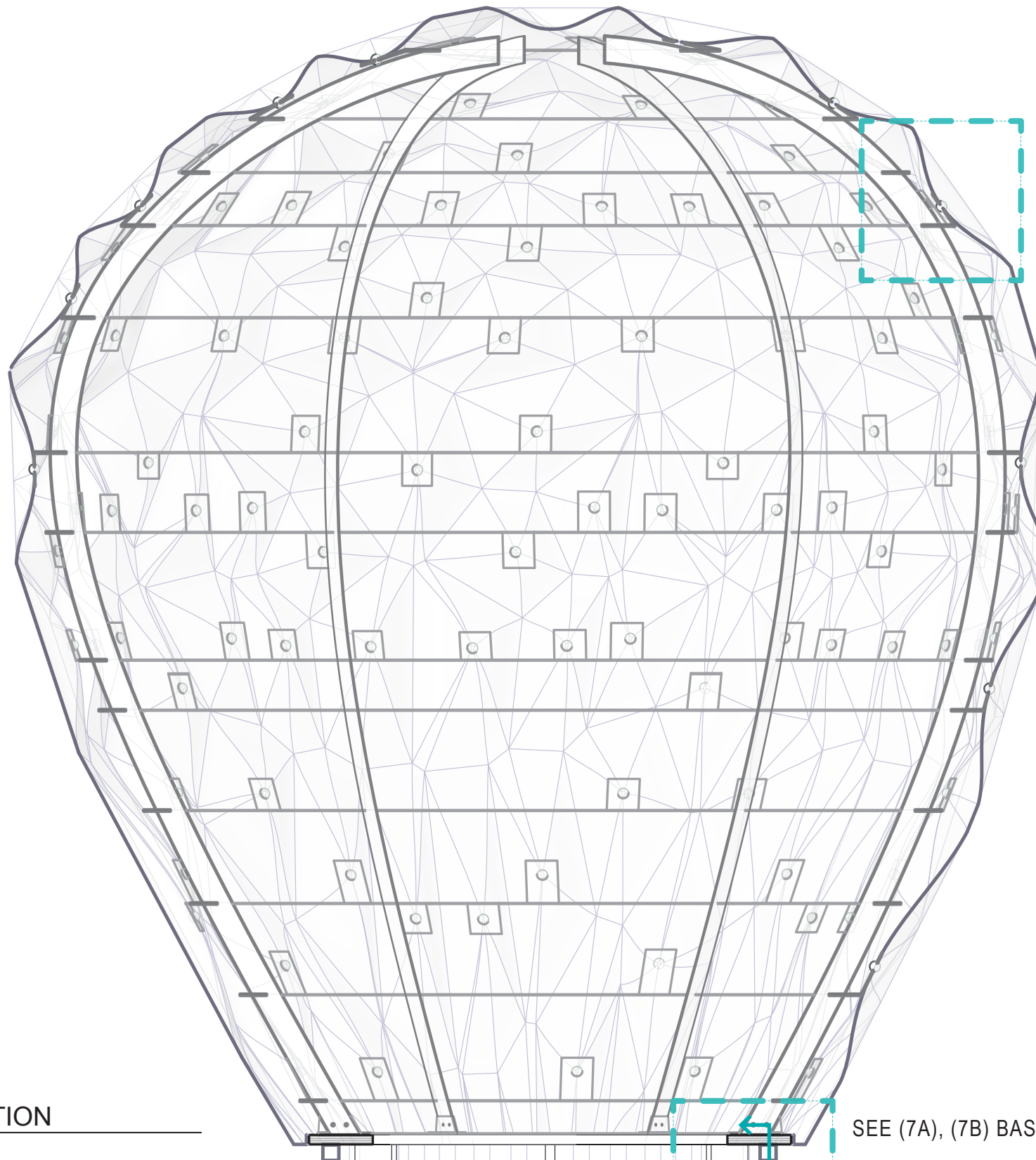


3 TOP VIEW
1:15



4 SIDE ELEVATION
1:15

DESIGN BY :				
 SINGAPORE UNIVERSITY OF TECHNOLOGY AND DESIGN Established in collaboration with MIT				
<small>SINGAPORE UNIVERSITY OF TECHNOLOGY AND DESIGN 8 SOMAPAH ROAD SINGAPORE 487372 TEL: (65) 6305 9500 WEB: www.sutd.edu.sg</small>				
PROJECT :				
SUTD-ILIGHT INSTALLATION ILIGHT FESTIVAL 2017 SINGAPORE				
DRAWING NAME :				SCALE
ELEVATIONS W/ DIMENSIONS				1:15
				2



SEE (6) SECTION DETAIL

SEE (7A), (7B) BASE DETAILS

5 SECTION
1:10

DESIGN BY :

SUTD
SINGAPORE UNIVERSITY OF
TECHNOLOGY AND DESIGN
Established in collaboration with MIT

SINGAPORE UNIVERSITY OF TECHNOLOGY AND DESIGN
8 SOMAPAH ROAD SINGAPORE 487372
TEL: (65) 6305 9600 WEB: www.sutd.edu.sg

PROJECT :

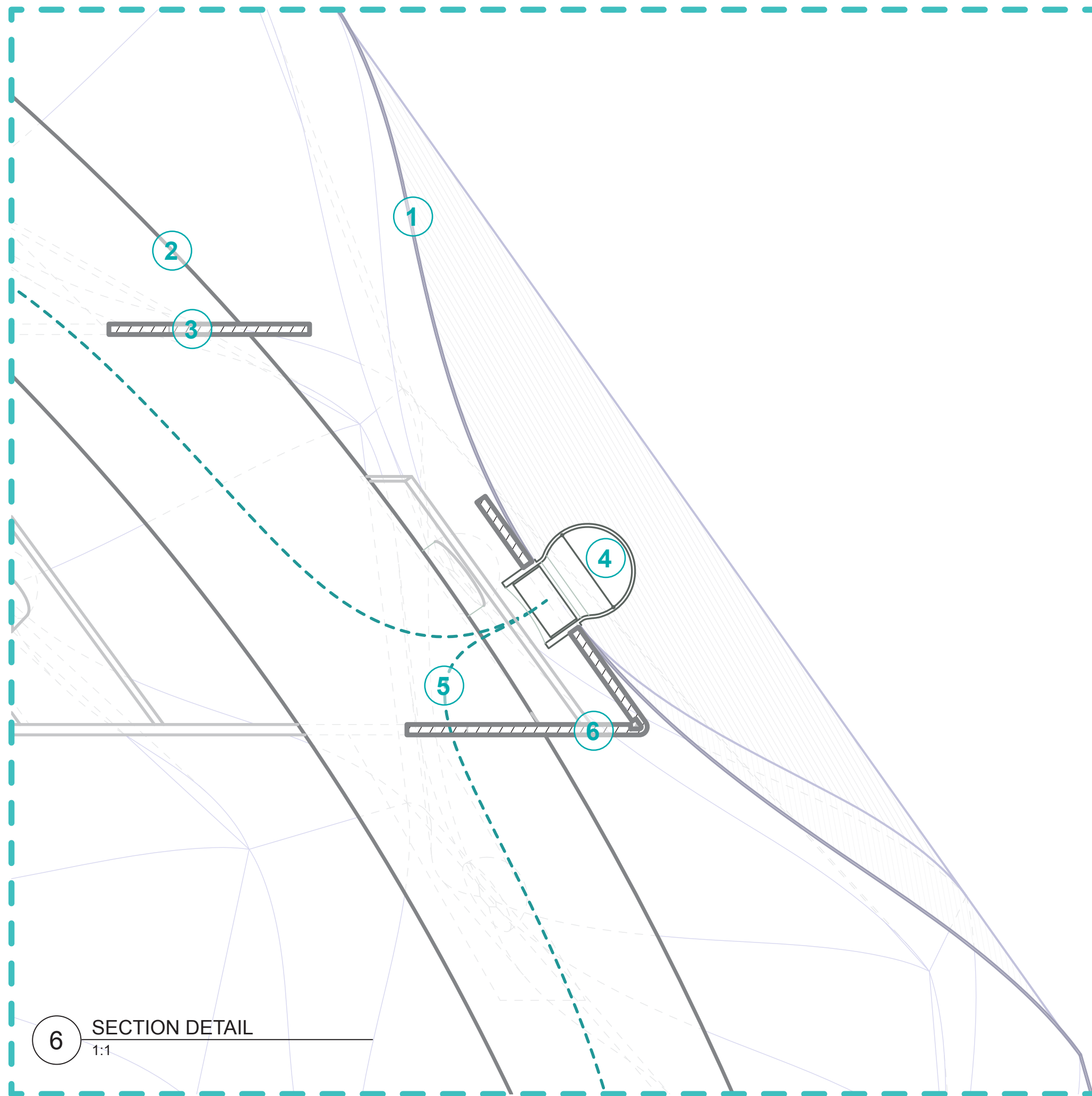
SUTD-ILIGHT INSTALLATION
ILIGHT FESTIVAL 2017
SINGAPORE

DRAWING NAME :

SECTION

SCALE

1:10



- ① CURVE-FOLDED PANELS, METALLIZED MYLAR FILM, 0.127mm THK
- ② PREFAB. VERTICAL RIB, SLOTTED, ALUMINUM (6061), 3.5mm THK
- ③ PREFAB. HORIZONTAL RIB, SLOTTED, ALUMINUM (6061), 2.6mm THK
- ④ COMPACT LED NODE (PRE-WIRED STRAND), IP66-RATED, Ø 36mm
- ⑤ WIRING FOR LED NODES
- ⑥ FOLDING TAB DETAIL ON HORIZONTAL RIBS, FOR MOUNTING LED NODES

6 SECTION DETAIL
1:1

DESIGN BY :



SINGAPORE UNIVERSITY OF TECHNOLOGY AND DESIGN
8 SOMAPAH ROAD SINGAPORE 487372
TEL: (65) 6305 9600 WEB: www.sutd.edu.sg

PROJECT :

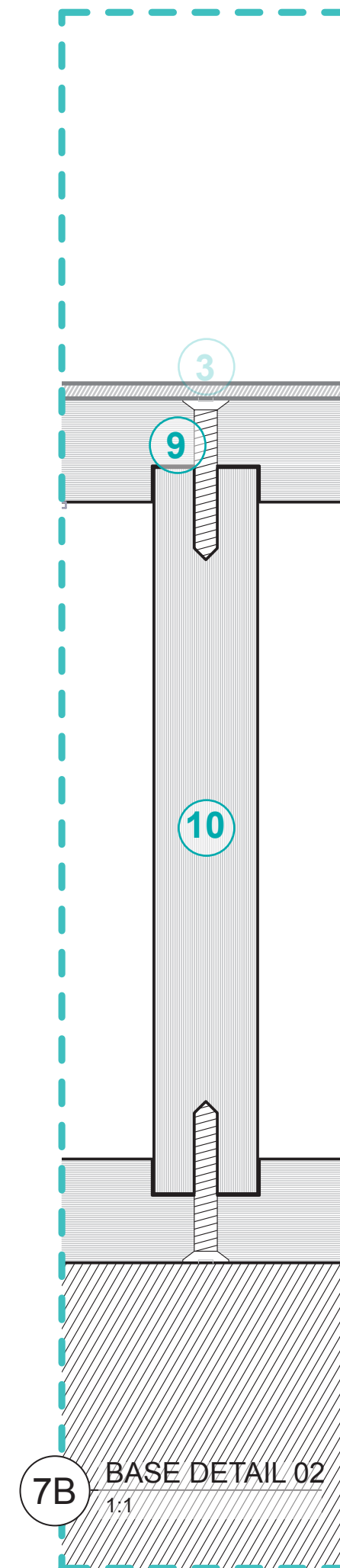
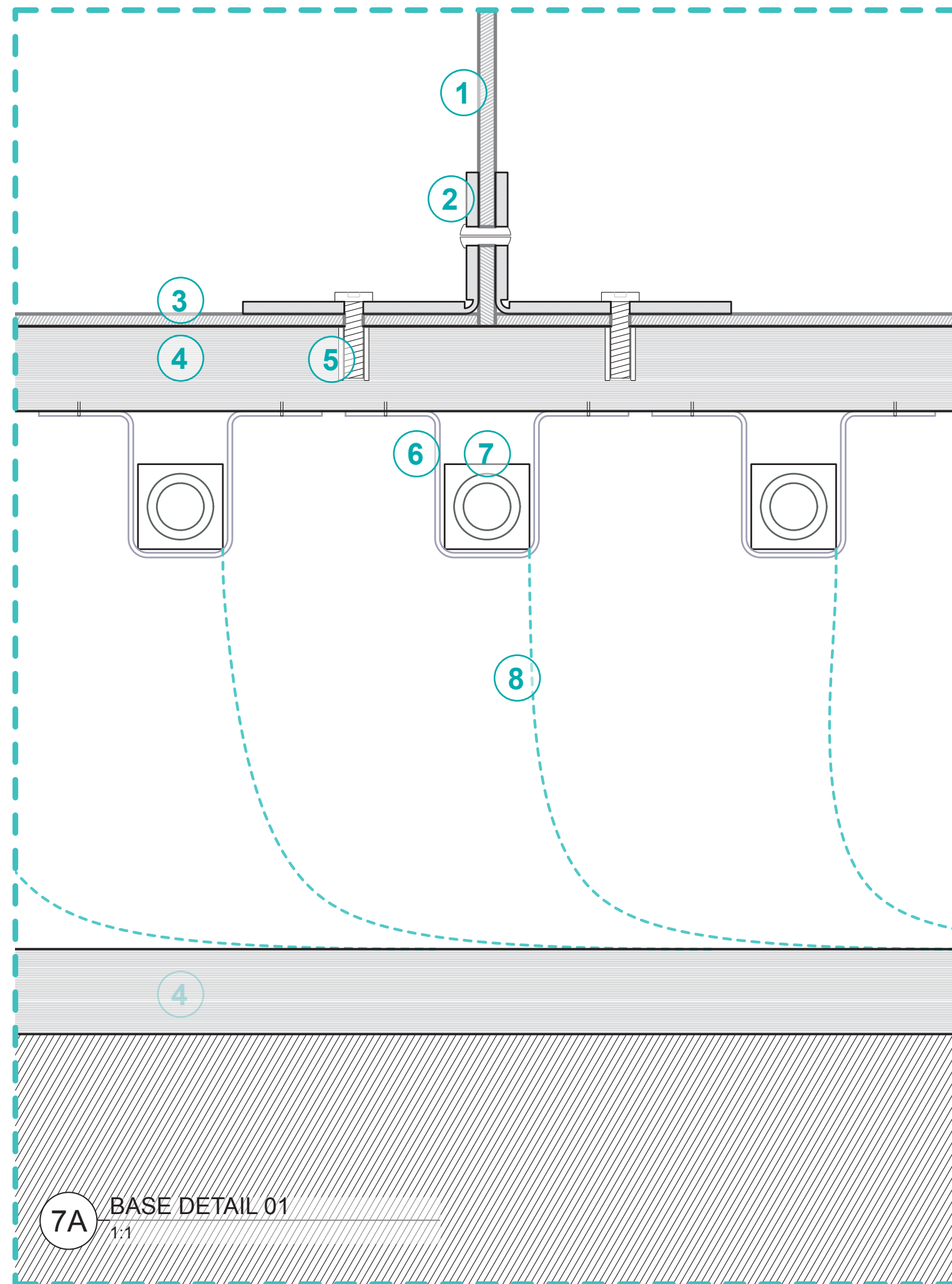
SUTD-ILIGHT INSTALLATION
ILIGHT FESTIVAL 2017
SINGAPORE

DRAWING NAME :

SECTION DETAIL

SCALE

1:1



- ① PREFAB. VERTICAL RIB, SLOTTED, ALUMINUM (6061), 3.5mm THK
- ② RIVETED BRACKET FIXING (1,3), ALUMINUM (6061), 2.6mm THK
- ③ PREFAB. HORIZONTAL RIB, SLOTTED, ALUMINUM (6061), 2.6mm THK
- ④ HORIZONTAL BASE RING, PLYWOOD, PAINTED, 18mm THK
- ⑤ SCREWED JOINT FIXING (2,3,4)
- ⑥ SENSOR BRACKET, STAPLED TO (4)
- ⑦ PROXIMITY SENSOR (COLLECTS DATA TO CONTROL LED NODES)
- ⑧ WIRING FOR SENSORS
- ⑨ SCREWED & SLOTTED JOINT FIXING (4,10) AS COMPLETE BASE ASSEMBLY
- ⑩ VERTICAL BASE RING, PLYWOOD, PAINTED, 18mm THK