

Found Lost (tent.)

By Su Yang, Lan Tian, Ying Hui





What is it about?

Identity crisis through Cultural Loss

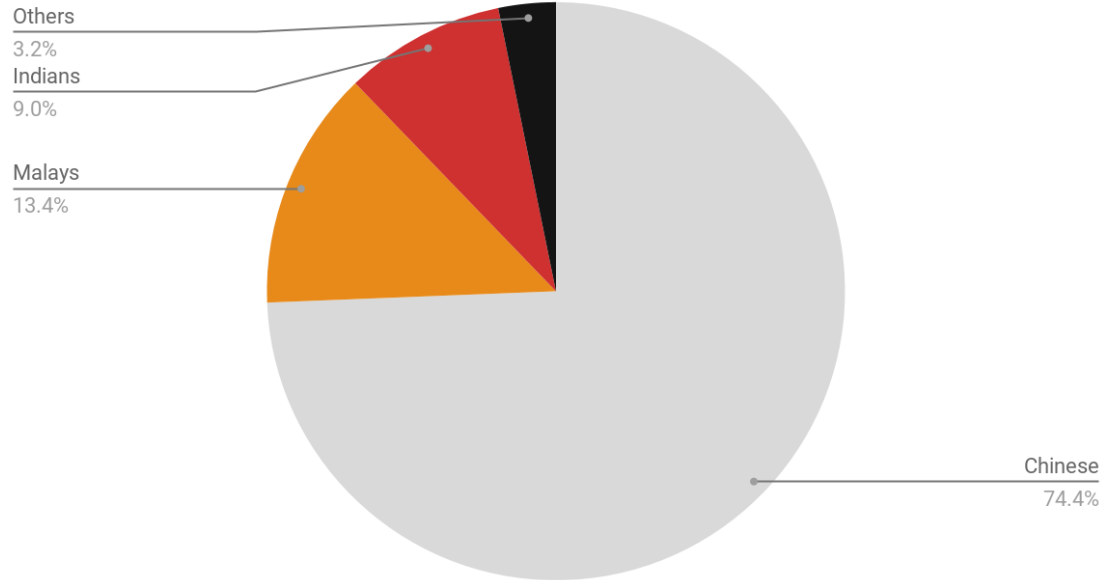
(e.g. Dialects, Heritage)

“Old identities which stabilized the social world for so long are in decline, giving rise to new identities and fragmenting the modern individual as a unified subject.”

-- Stuart Hall

Some Interesting Data

Ethnic Composition of Singapore 2018

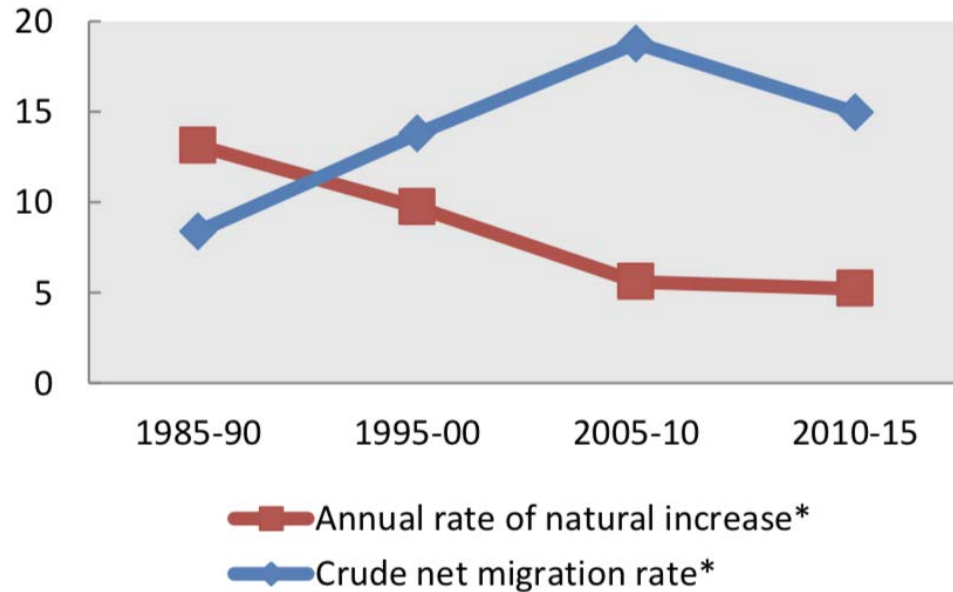


Some Interesting Data

Ethnic composition of resident population

Ethnic group	1970^[48]	1980^[48]	1990^[12]	2000^[12]	2010^[12]	2011^[12]	2012^[12]	2013^[12]	2015^[49]
Chinese	77.0%	78.3%	77.8%	76.8%	74.1%	74.1%	74.2%	74.2%	74.3%
Malays	14.8%	14.4%	14.0%	13.9%	13.4%	13.4%	13.3%	13.3%	13.3%
Indians	7.0%	6.3%	7.1%	7.9%	9.2%	9.2%	9.2%	9.1%	9.1%
Others	1.2%	1.0%	1.1%	1.4%	3.3%	3.3%	3.3%	3.3%	3.2%

Some Interesting Data



Background Information

London (UK)

New York (US)

Singapore

“In just over 50 years, Singaporeans have developed their own versions of Chinese, Malay and Indian culture.”

-- Prime Minister Lee Hsien Loong

Possible Approach

Medium: Visual novel-esque interactive (tent.)

Players will experience the story from the perspective of two unnamed protagonists

Wandering across an unfamiliar land, we hope to spark some insight and familiarity in the players



Phase 4

UNW 00
WEAR RATE 05%

JNW 02
WEAR RATE 04%

JNW 03
WEAR RATE 06%

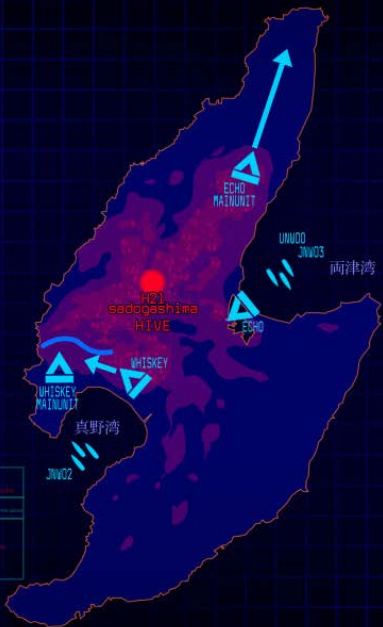
WHISKET
WEAR RATE 33%

ECHO
WEAR RATE 13%

UNOC 06
WEAR RATE 00%

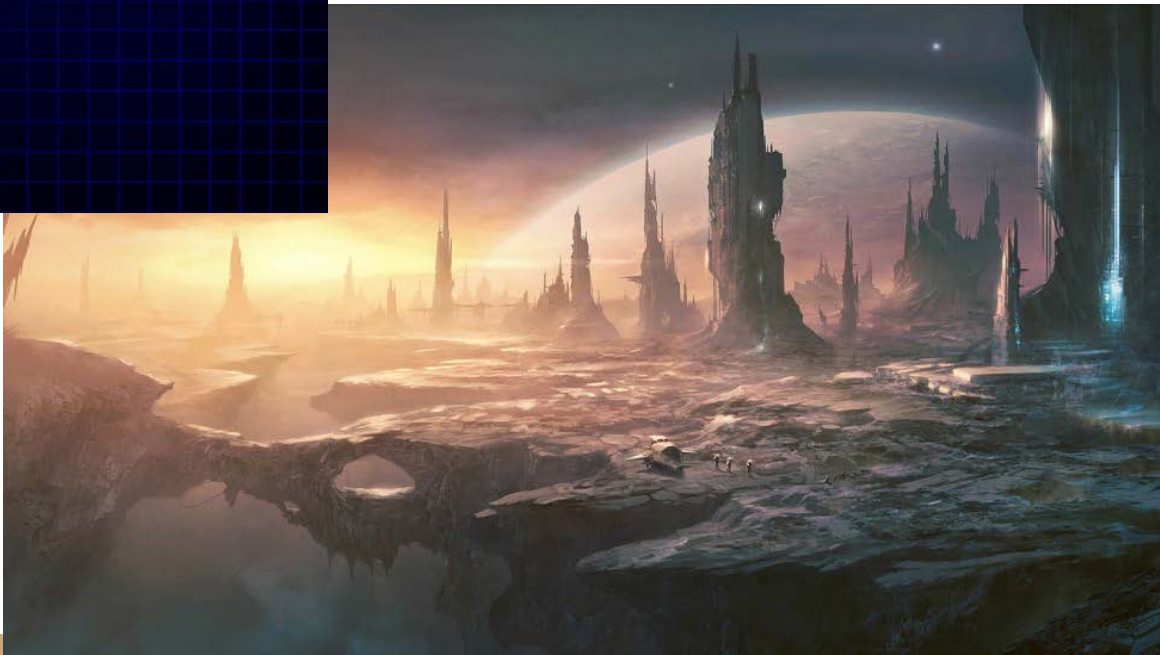
JEG 116
WEAR RATE 00%

UNVE A0
WEAR RATE 10%

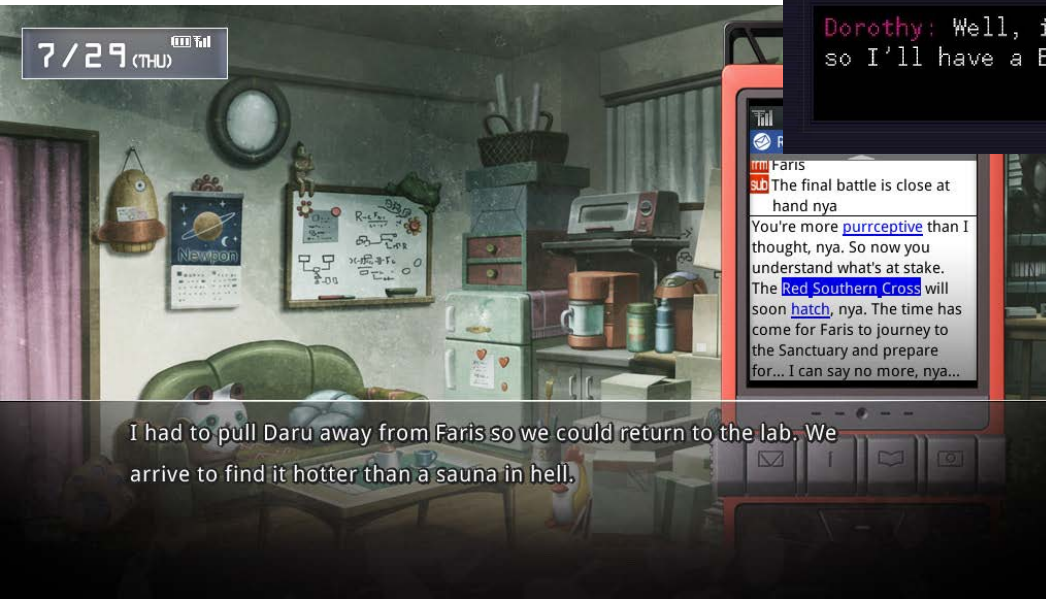


above: Muv-Luv Alternative (2011)

below: Stellaris (2016)



Inspirations



I had to pull Daru away from Faris so we could return to the lab. We arrive to find it hotter than a sauna in hell.



above: VA-11 Hall-A (2016)

below: Steins;Gate (2011)



Court Record

