



# Planar Construction

G07 Group B

#Lee Ying Hui Candy#  
#Najihra Puteri#  
#Natasya Adistana#

## Original Model



We call this model 'The Peacock Model' as it really resembles a peacock. It has some distinct characteristics such as the spiral head, the beautiful tail and the wing's feathers that come out left and right alternately. Also, the model has a dynamic composition which consist of many element having various directional axis. Moreover, it has interesting voids from different views which enhance its beauty.

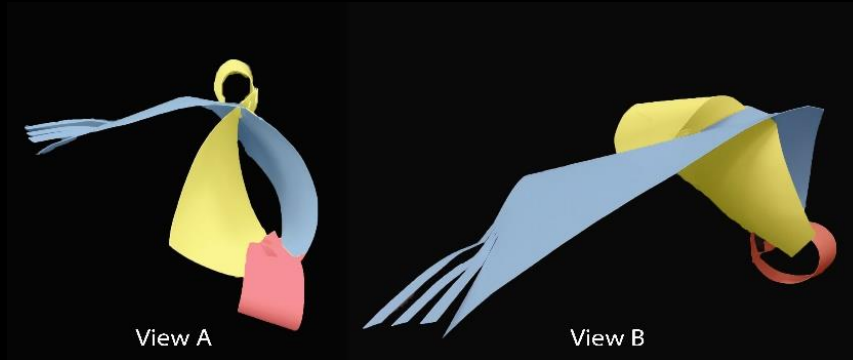
## Individual Models Inspired by Original Model

Legend:

- Dominant
- Sub-Dominant
- Subordinate

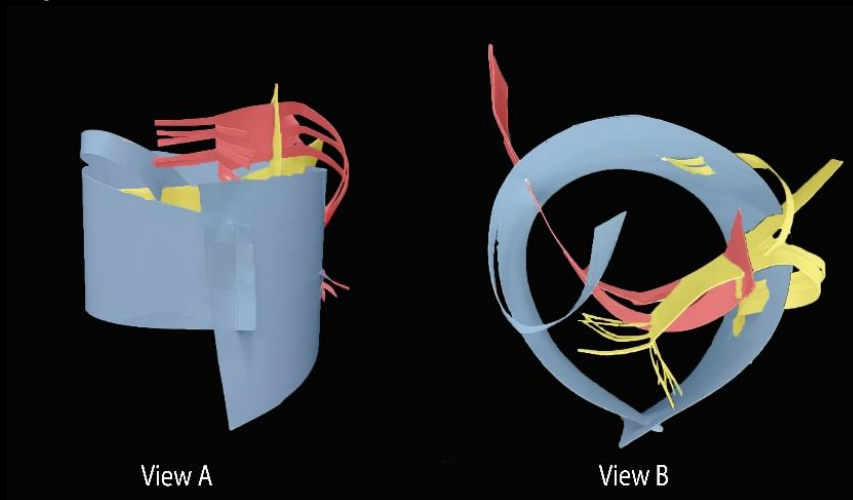
Each of us chose different views of the original model, simplify and modify it to an individual model consisting one Dominant (D), one Sub-Dominant (SD), and one Subordinate (SO) each.

### Candy's Model:



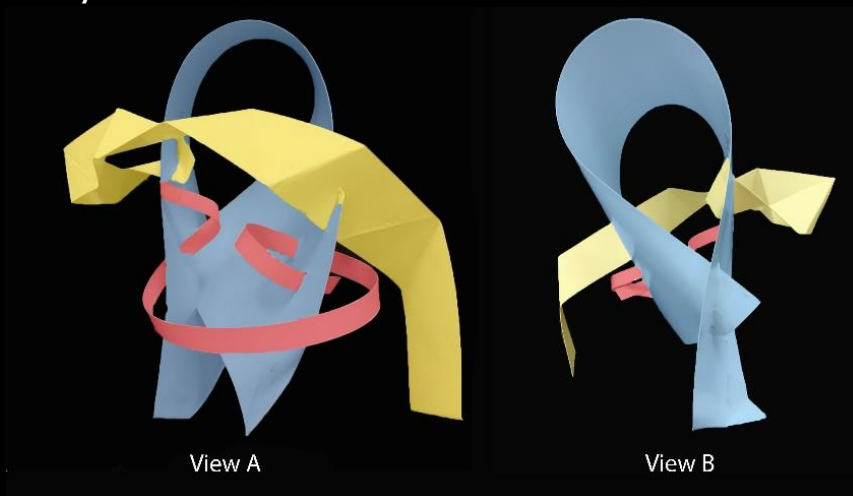
The main idea was to present big and simple curves, inspired by the original model, then followed by special finely cut ends to give a different texture. However, it ended up a little too simple, and the SO was where I could work on further.

### Najiha's Model:



SO stands out by weaving itself into D, it creates a really unique composition. The bottom of D should be tapered off so that it will not be completely covering the floor, creating a better flow overall.

### Natasya's Model:

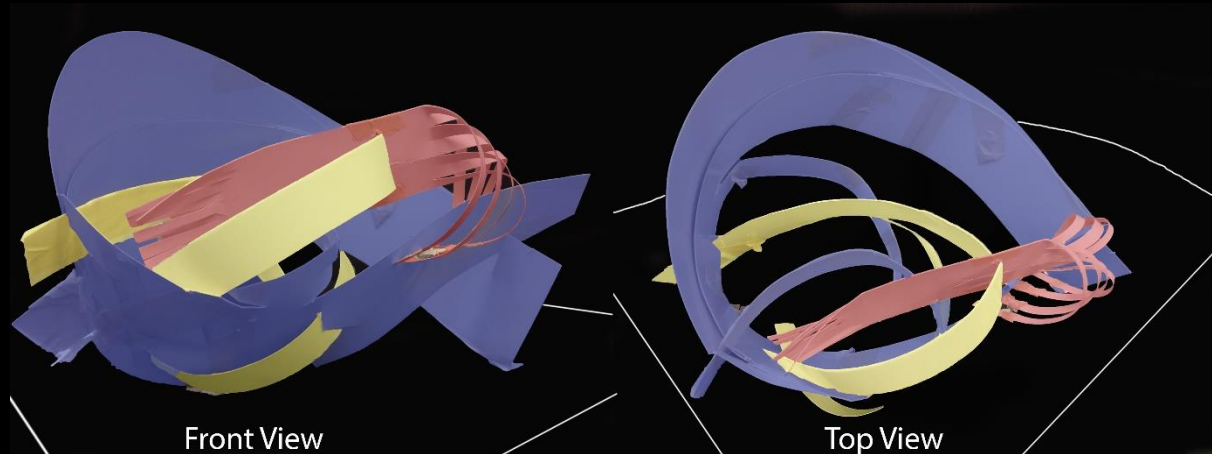


The broken plane of SD contrasts the other two planes, balancing the composition. The void created looks interesting but the bottom part (view A) seems too full and compact.



## Final Model

We decided to modify Najiha's model as our final model because it has the most interesting voids compare to other models, especially from the top. Also, it has a distinctive SO that is seen through weavings into D. Moreover, this SO actually preserves the essence of the original model (it is arranged alternately like the Peacock's model wing's feathers).

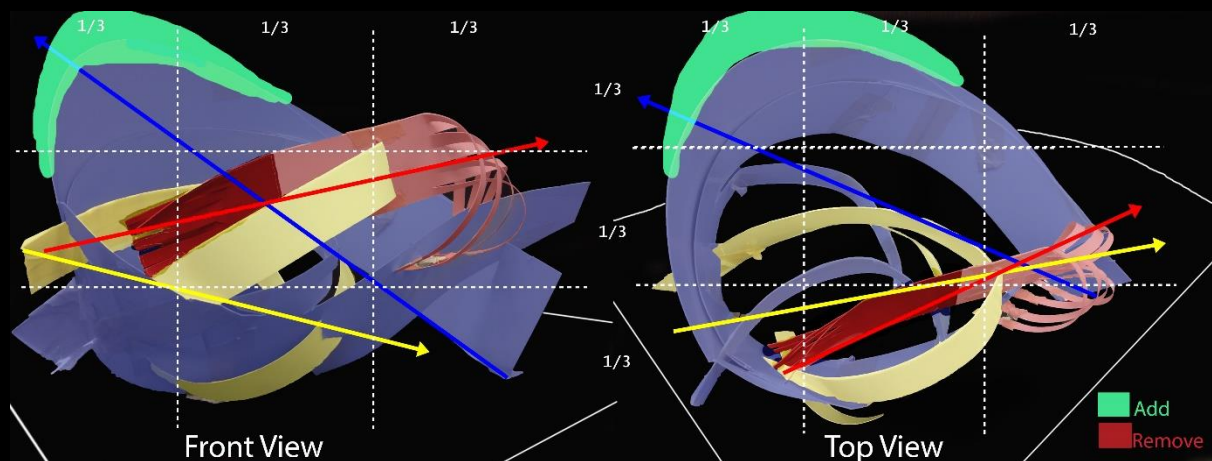


**Relationship:** D is a curved plane, SD is a curved plane, and SO is a complex plane

**Method:** SD is wedged to D, and is pierced through both D and SO. While SO is wedged through D and pierced through SD.

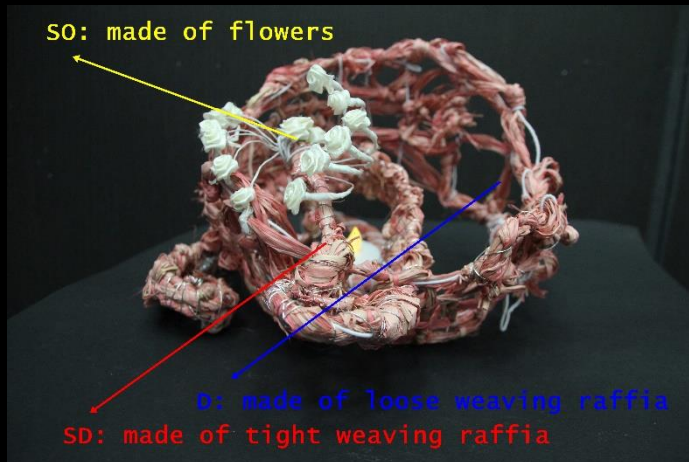
**Comment:** There is lack of contrast in types of plane, making the model looks too curvy everywhere and difficult to differentiate between D and SD. In term of size, we realize the model has various vertical height (front view) which giving the model an interesting variation. However, the SO is too long and taking too much space of the model. Also, there is a sense of dynamic movement as all the plane are moving to different directions. Moreover, we really like that the model is standing by using three-point support like a tripod which really give a continuous interesting flow. In terms of voids, the front view of the model looks very compact and lacks of voids, but the top view gives interesting void in the centre.

**Improvement:** Maybe we could modify our SD to be a broken plane to give more contrast and distinction between each plane in the model. We can also taper the left side of the SO (front view) which will make SO smaller but more impactful. Maybe we can vary the height of each model even more to add more void from front view. We can also enlarge the perimeter of D so that to increase the void in the centre of the model, making it even more interesting.



## Applications

### #1: Natura-Lamp



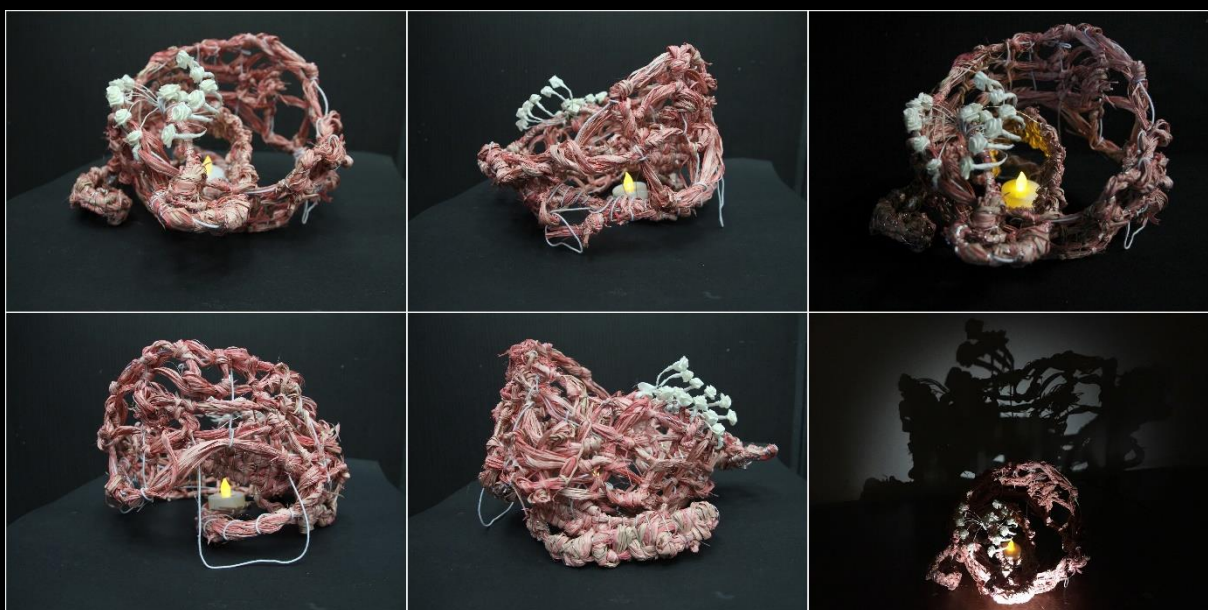
Our key application to our design is a romantic table lamp. Our workpiece is made by repeatedly weaving the raffia strings in a pattern similar to making the *ketupat* to give holes amongst the rough raffia texture for the D. The SD was constructed in the same way, but tied tighter, with no holes. The SO is the 2 small bunches of white flowers to complete the overall native and natural look.

A small candle is placed in the centre of the lamp for it is warm and gentle illuminance. The natural flickering helps to enhance the interesting lights and shadows.

#### Process:

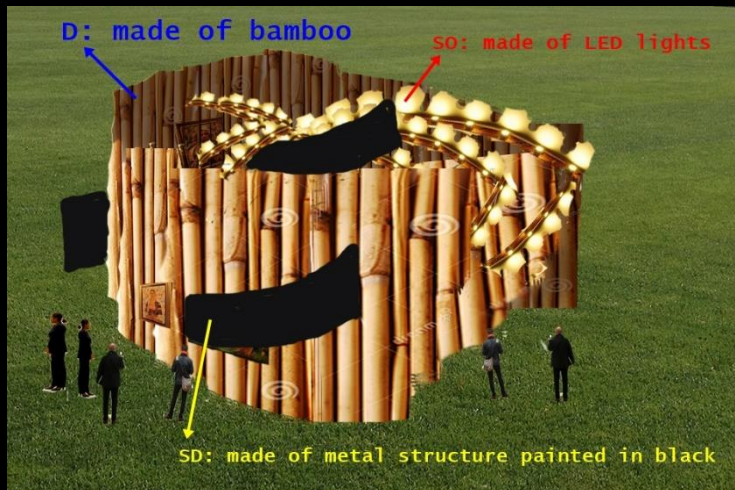


#### Different views of Natura-Lamp



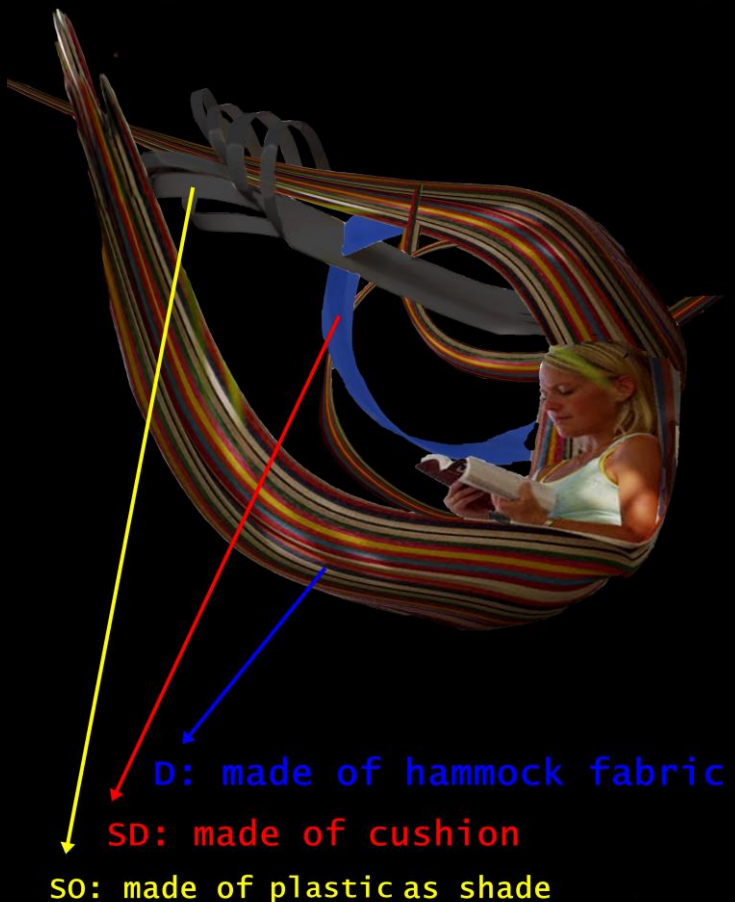


## #2: OSAG - Open Space Art Gallery



mass, we have thought of the possibility of setting it up as an outdoor art/ exhibit gallery. The big and curved D would act as an interesting curved exhibit wall in the more lasting bamboo material, and at the same time giving its natural blend with the outdoor location. The SD would be made of metal structure to support the SO and painted black to give contrast in colour. While SO would then contain spotlights (LED) to gently light up the venue at night.

## #3: The New Definition of Hammock



In our attempt to involve in personal comfort, we could apply the design into making a hammock. The hammock is constructed as what an ordinary hammock would look like, and that is where we got our inspiration. The improvement is that we provide cushion for head-rest and shade to protect form direct sunlight. Moreover, the hammock size can be adjusted hence suitable for every family member.