

Leigh Bowery

(1961 – 1994)



Leigh Bowery

Born in Sunshine, Australia,
later moved to London to perform.

A Fashion Designer, Club
Promoter, and a Performing Artist.

Known for his flamboyant and outlandish
costumes and makeup as well as his
(sometimes controversial) performances.



Fashion Designer

*“Rather than painting on canvas
or sculpting in clay, I put all
these ideas onto myself.”*

Fashion Designer

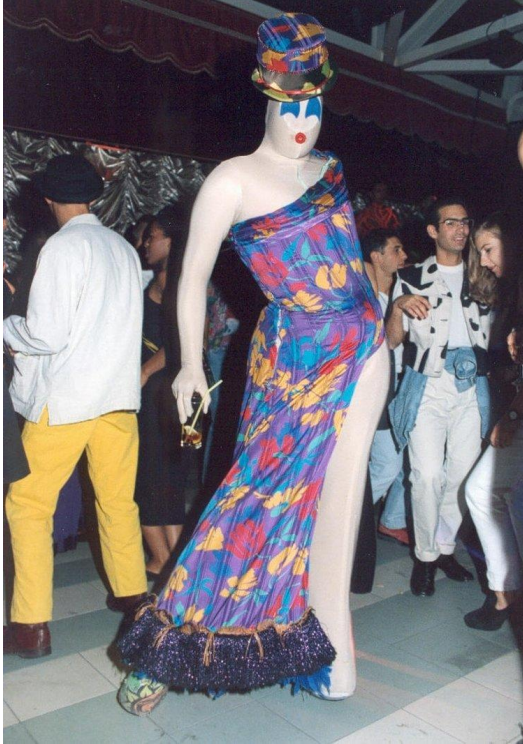
Turned exhibitionism into an art form

Wigs, masks, heavy makeup and clothes he designed and made himself

Michael Clark: He enjoys confusing people, he enjoyed creating the kind of response that makes people go like “what the f*** was that”



Fashion Designer





00:00 –
01:44



Club Promoter

Created the club called “Taboo”

Known for defying sexual norms, for embracing “polysexualism”, and for its wild atmosphere



Club Promoter



Performance Artist

In 1988, Bowery performed at the Anthony D'Offay Gallery, for two weeks behind a two-way mirror.

Performing in an established art gallery instead of in a nightclub as a “entertainer”





47:55 –
49:10

Performance Artist

He “gave birth” to his own wife/friend/assistant,
using sausages as the umbilical cord.





00:40 –
01:45

Performance Artist

WARNING
Viewer discretion is advised

“Diarrhoea”, Front row Audience.



40:00 –
40:45

Performance Artist

Out of the norm

Exploration

Entertaining



Impact Today

A person with ideas

Lady Gaga & Alexander McQueen

