

FOUNDATION 3D

PROJECT 1

G02

AMANDA LEE PING PING

# **PANDORA'S BOX**

**FINAL MODEL & ANALYSIS**

# **FINAL MODEL**

# **MECHANISM**

**The final model for Weight / Mass has been followed up from the second assessed model by wedging the SO into the D and creating a sliding system by cutting a slit through the D to its halfway point and putting a smaller slit on the SO so that it can be fitted in. The SD can rotate as well by piercing it with a toothpick and sticking the other end of the toothpick onto the SO.**



**FINAL MODEL SIDE 1**



**FINAL MODEL SIDE 2**

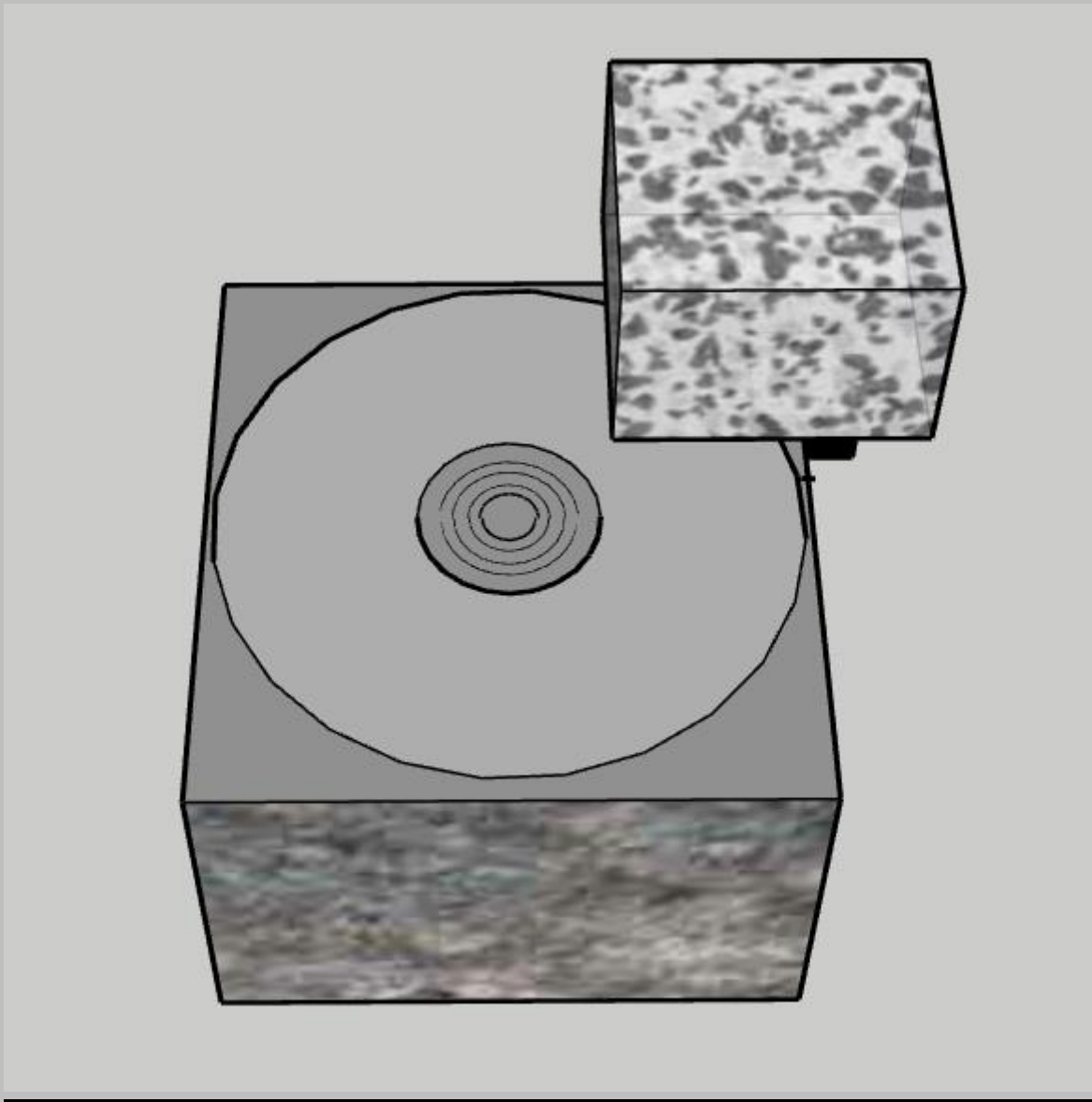


**FINAL MODEL SIDE 3**

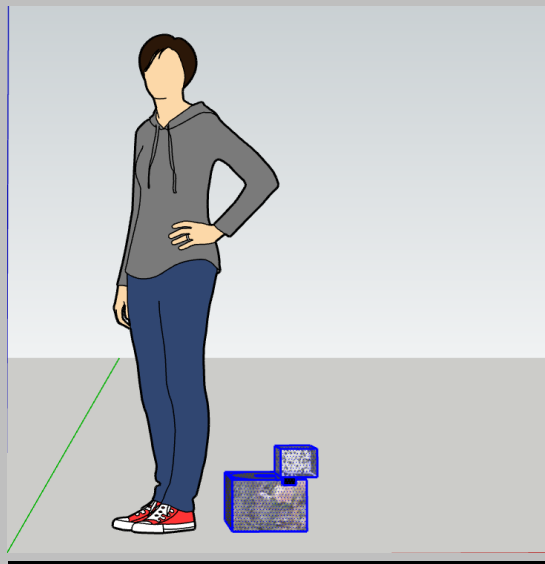
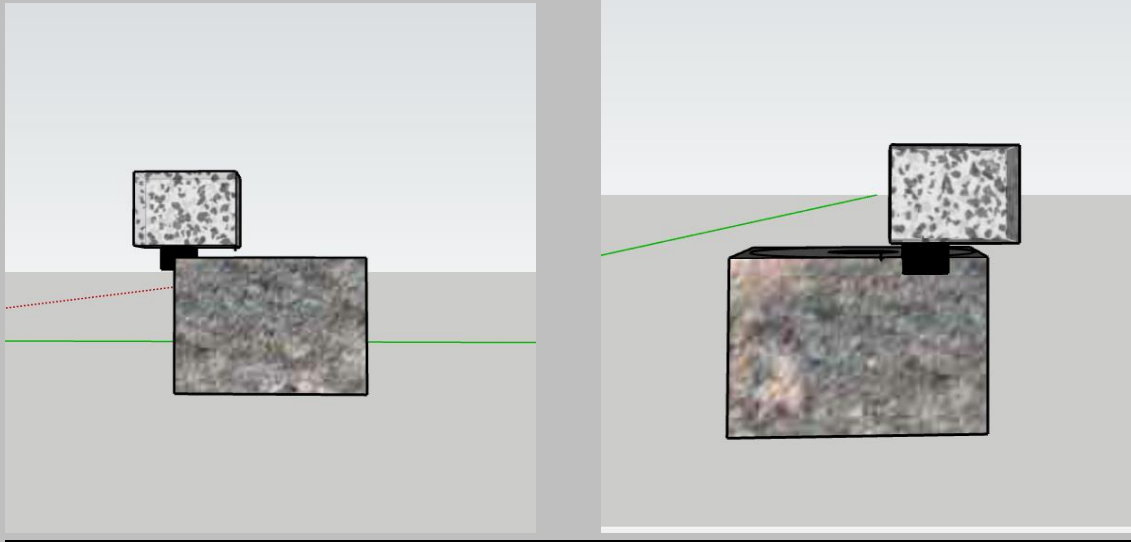
# **CONCEPT AND** **MATERIAL CHOICE**

**I decided to play with the sizing of the boxes to better emphasize the weight of one box that helps to support the others, thus I implemented wedging to give a better foundation in which the SD can better balance on. The material I used for each component has a huge contrast as well, as for the D I used marble, which is extremely heavy. Meanwhile for the SD and SO I used paper and acrylic respectively, which are much lighter compared to the marble. Therefore, this model shows weight in a very literal way, plus the fact that the SD and SO can move around without the D moving also emphasizes on the sheer weight and support the marble box is giving.**

# SMALL SCALE APPLICATION



**VINYL RECORD PLAYER**

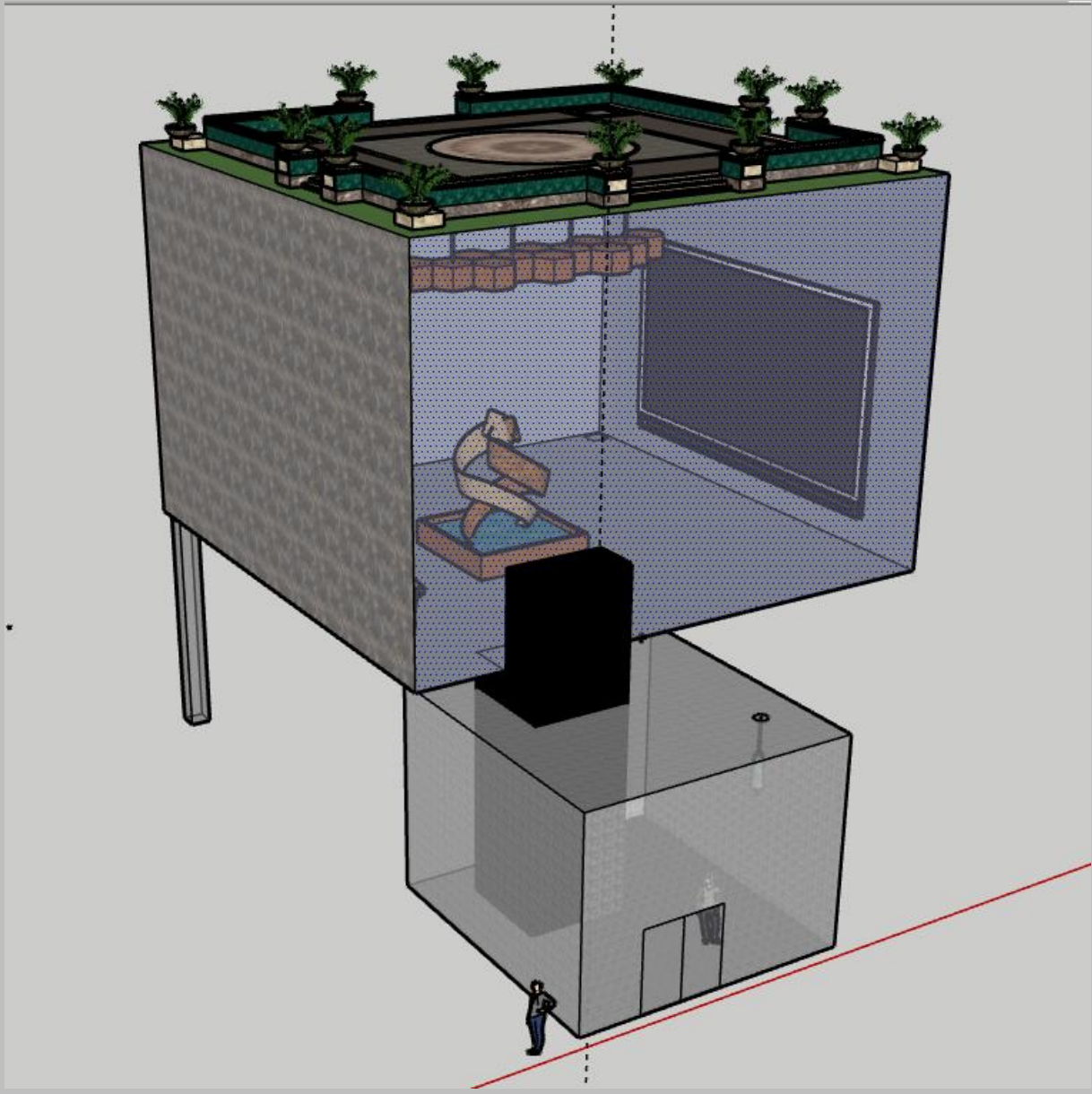


---

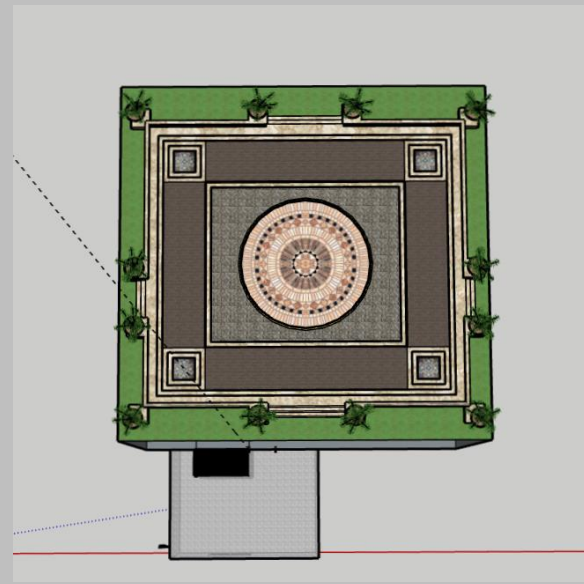
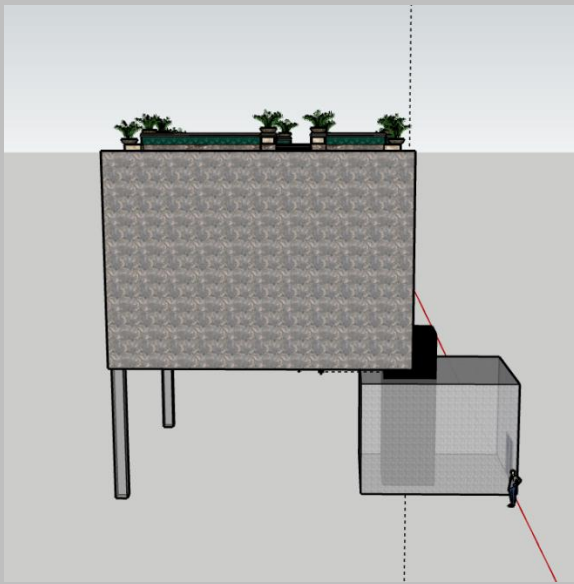
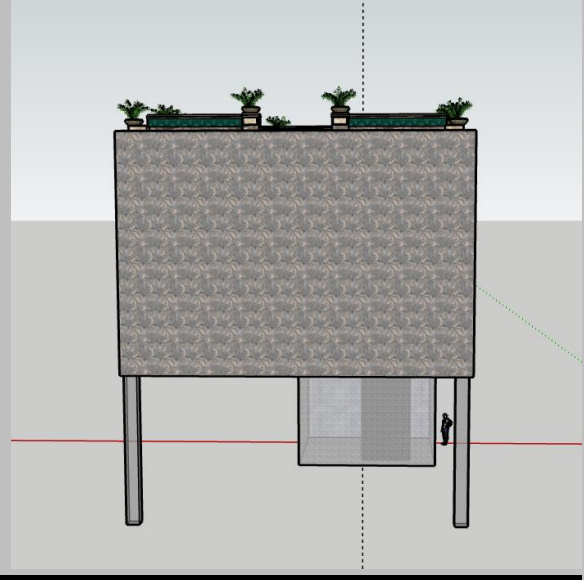
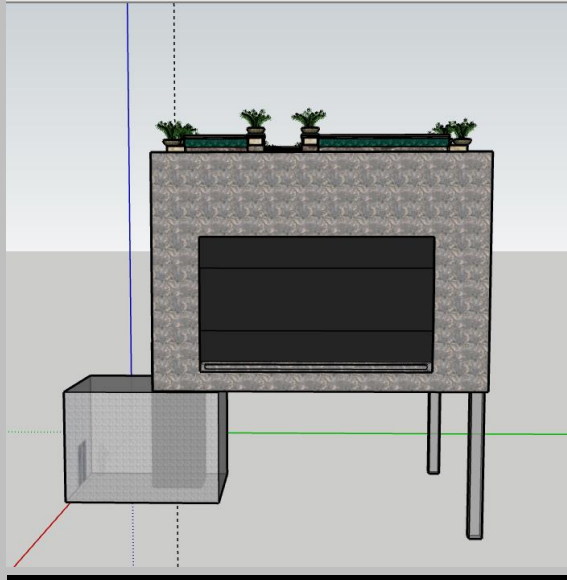
**The needle that plays the record disk can be turned out and shifted to the edge of the player, to ensure easier loading of the vinyl record. Then when the record is loaded already, the needle can be shifted back. This allows for easier application and removal of the disk plus it would decrease scratches and marks formed on the disk.**



# LARGE SCALE APPLICATION



**BUNGALOW / GALLERY**



**The SD can be the lower floor / lobby / reception area and I extended the SO to create a shaft of sorts to hold a lift so that people can go upstairs to the bigger space (D). It could be an area where artworks are presented / talks are held/ or a living space.**

# **SELF - REFLECTION**

**From this project, I have experimented with the distribution of weight across the D, SD and SO, also through the materials used to show different masses in different materials.**

**I did encounter some issues with handling the materials and ensuring that they are able to balance, while maintaining form and aesthetics, such as the final model, where I changed the SD to paper from Styrofoam to ensure that it fixes better onto the SO.**

**THANK  
YOU**