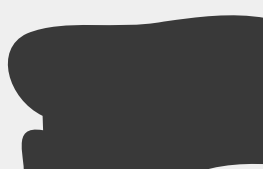
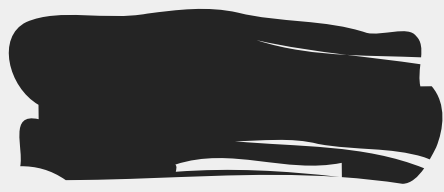




THE COW
Amanda Oh



SENSES




Sight

Vision is one of the dominant sense in cows. They have 330° panoramic vision, having binocular vision for a limited area in front of them, but not being able to see well from the side or the back. They can see in all colors with the exception of red.

Sound




Cows have a wider range of hearing than humans and are very sensitive to high frequency sounds. Despite that, cows have greater difficulty in locating the origin of sounds and will use their sight to assist them determine the source. High pitched sounds or sudden loud noises are unpleasant to cows.

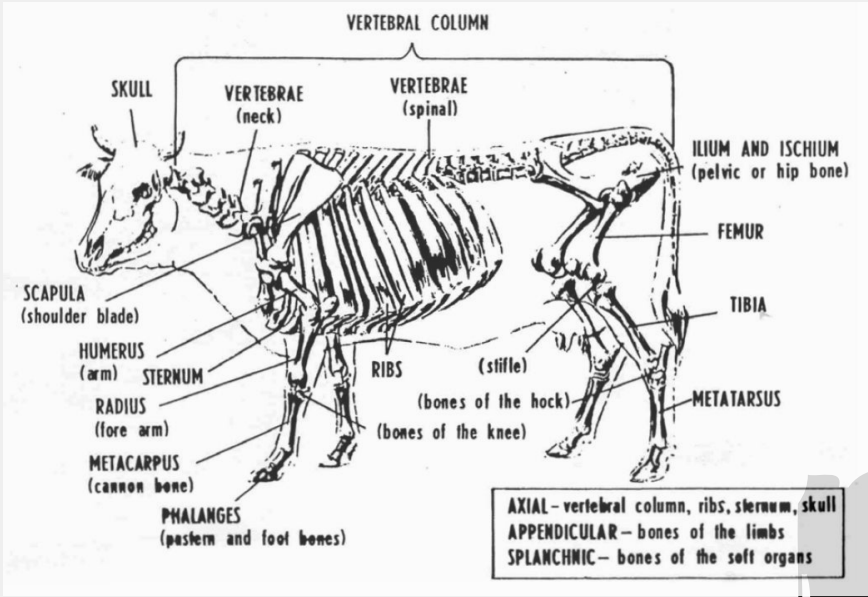


Smell

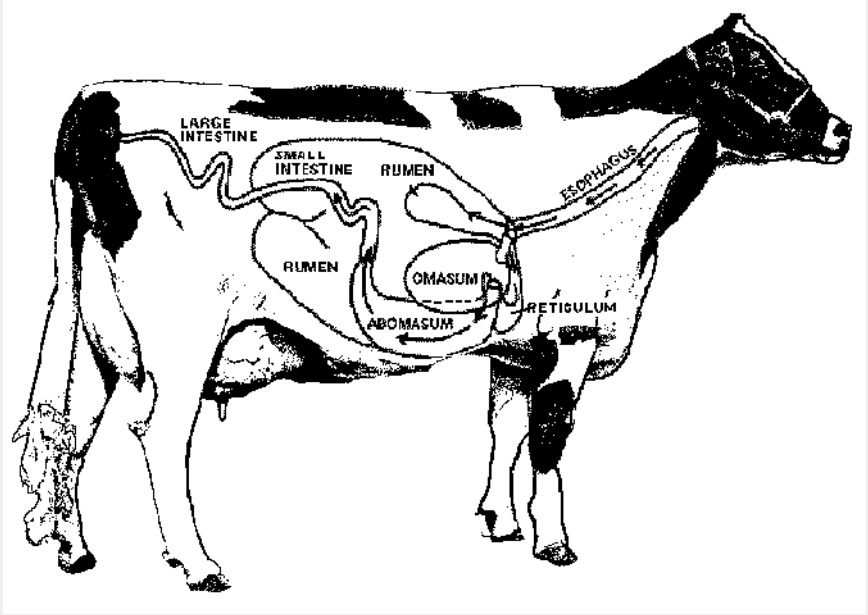
They have an excellent sense of smell, being able to detect odors over five miles away.



ANATOMY



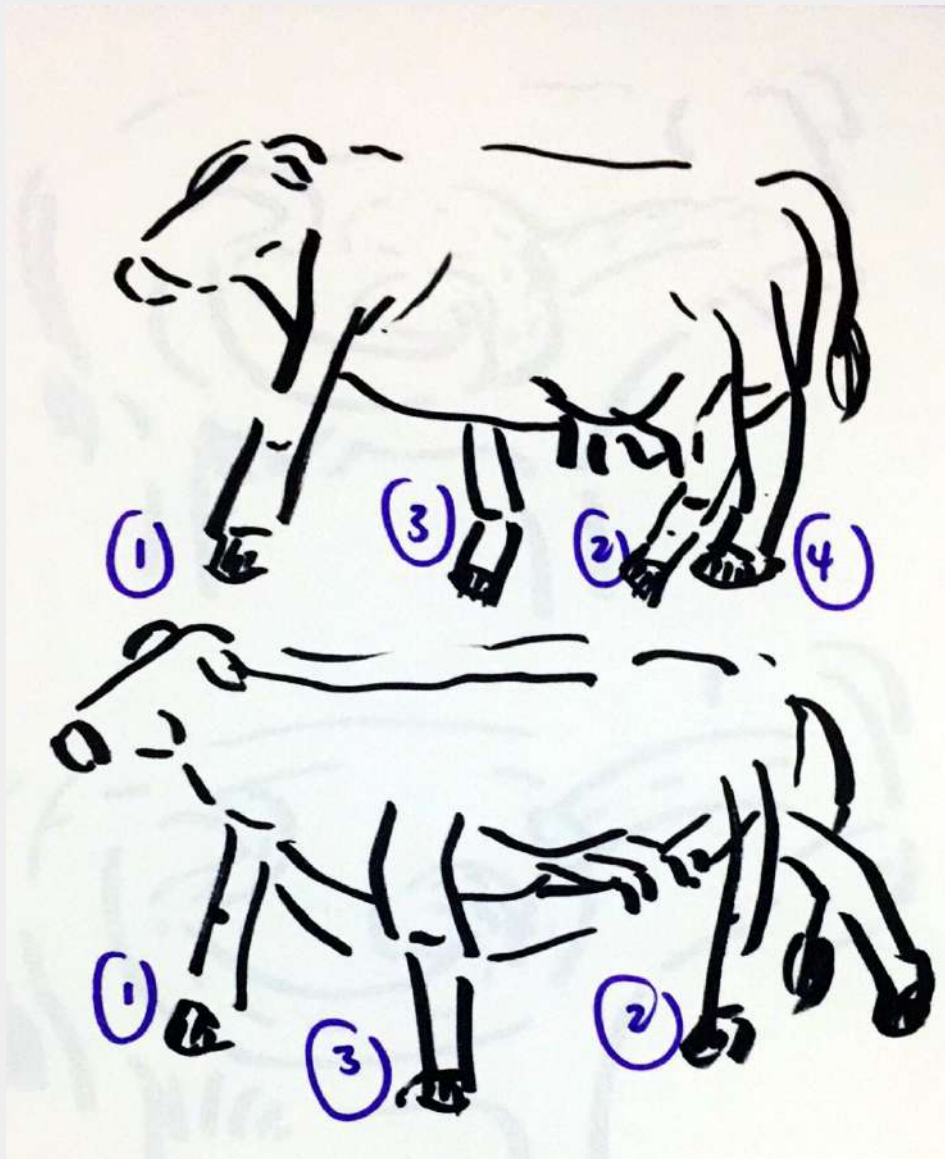
Skeletal system



Digestive system

RANGE OF MOTION

Cows have 4 legs and their usual movements include walking, running, sitting or lying down.



RUMINANT DIGESTIVE SYSTEM

One unique point about cows is their digestive system. Cows chew very little before swallowing. Later, they bring the ingested food back up their esophagus, re-chewing, re-swallowing and repeating this cycle. This process is called "chewing the cud" and is part of the ruminant digestive system of the cow.



THE MODEL



The model follows that of the digestive system of the cow, the main sections being the oesophagus, the stomach and the intestine. The ball of food travels through the sections with a series of movements, eg. dropping from a height, using a magnet or a couple of pins

RELATIONSHIP WITH VAMPIRE BATS

Cows and Vampire Bats have a parasitism relationship whereby vampire bats suck the blood and feed on cows when they are asleep, allowing them to benefit while the cow gains nothing.

