

brought to you by...

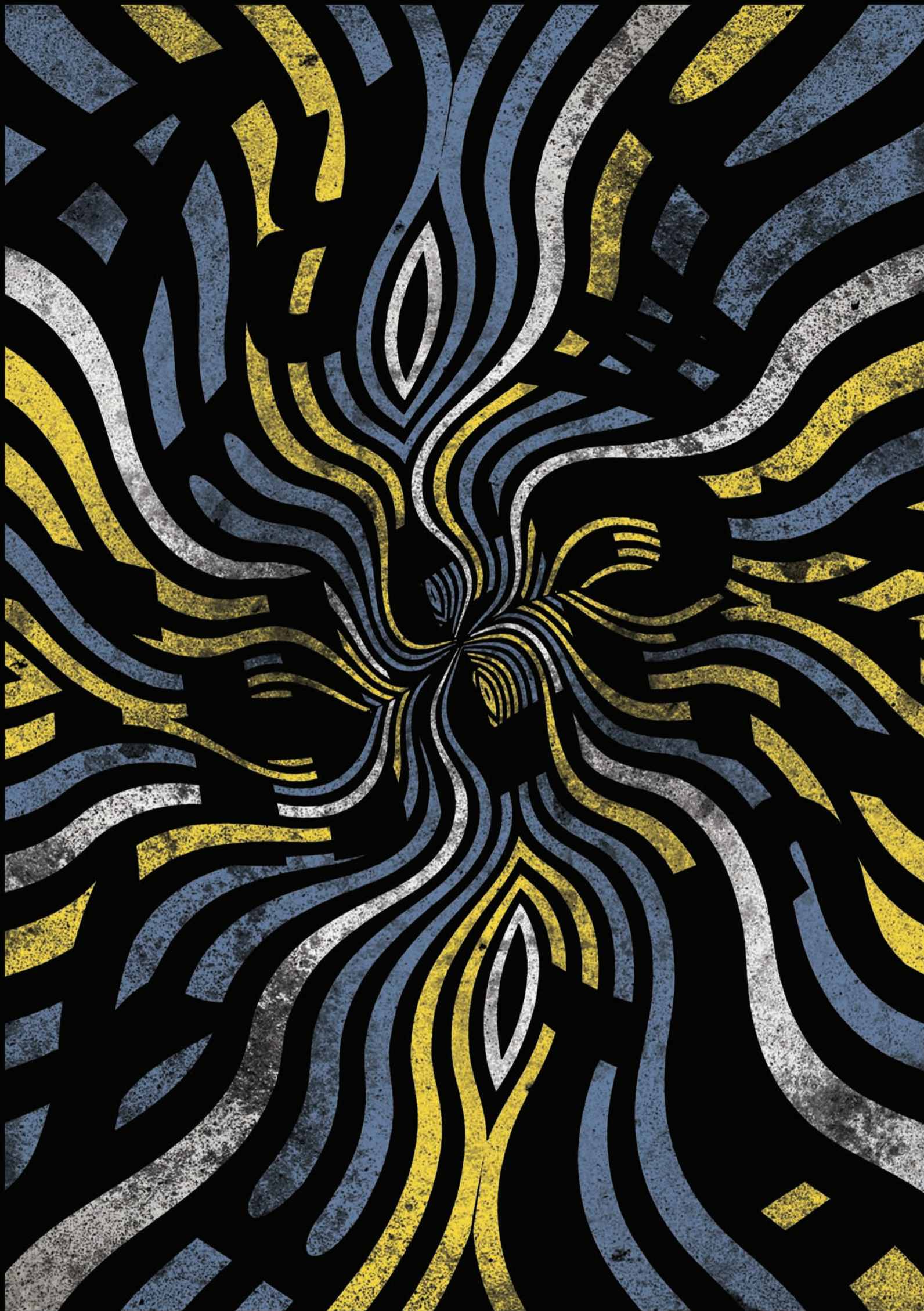
BENJAMIN QUEK
BRIDGEL SZE
CELLA YEW
CHEN QINGYAN
CHARMAINE KOK
CHEW ZILING
DOU MEIHUAN
GINNIE LEE

HAMIMAH
HUANG LEI
LEE QIU WEN
LIM EN QI
LIU YIXUAN
MINDY YAP
QUAN RUI
RACHEL CHOO

SABRINA
SHERNEESE TAN
SUM MUN CHENG
TAY JIA EENN
TEO QI YUN
VIENA LEE
WEE YEN
ZARINAH

ARE WE THERE YET!?

Understanding Paradoxes
Zeno's Paradoxes



The dichotomy paradox in simple terms refers to movement as “merely an illusion”. The impossible task of reaching one’s end goal due to the infinite number of midpoints you first have to pass through.

The exhibition hopes to take viewers through the counter intuitive nature of quantum physics. A visual journey that never comes to an end.



NANYANG
TECHNOLOGICAL
UNIVERSITY
SINGAPORE

School of Art, Design
and Media
College of Humanities, Arts, and Social Sciences

20 NOVEMBER 2019
9:00AM - 5:00PM
NANYANG TECHNOLOGICAL
UNIVERSITY, SCHOOL OF ART,
DESIGN & MEDIA

20 NOV 2019 – 19 JAN 2020
9:00AM - 9:00PM
NANYANG TECHNOLOGICAL
UNIVERSITY, MEDIA ART
NEXUS @ NORTH SPINE PLAZA
www.adm.ntu.edu.sg

brought to you by...

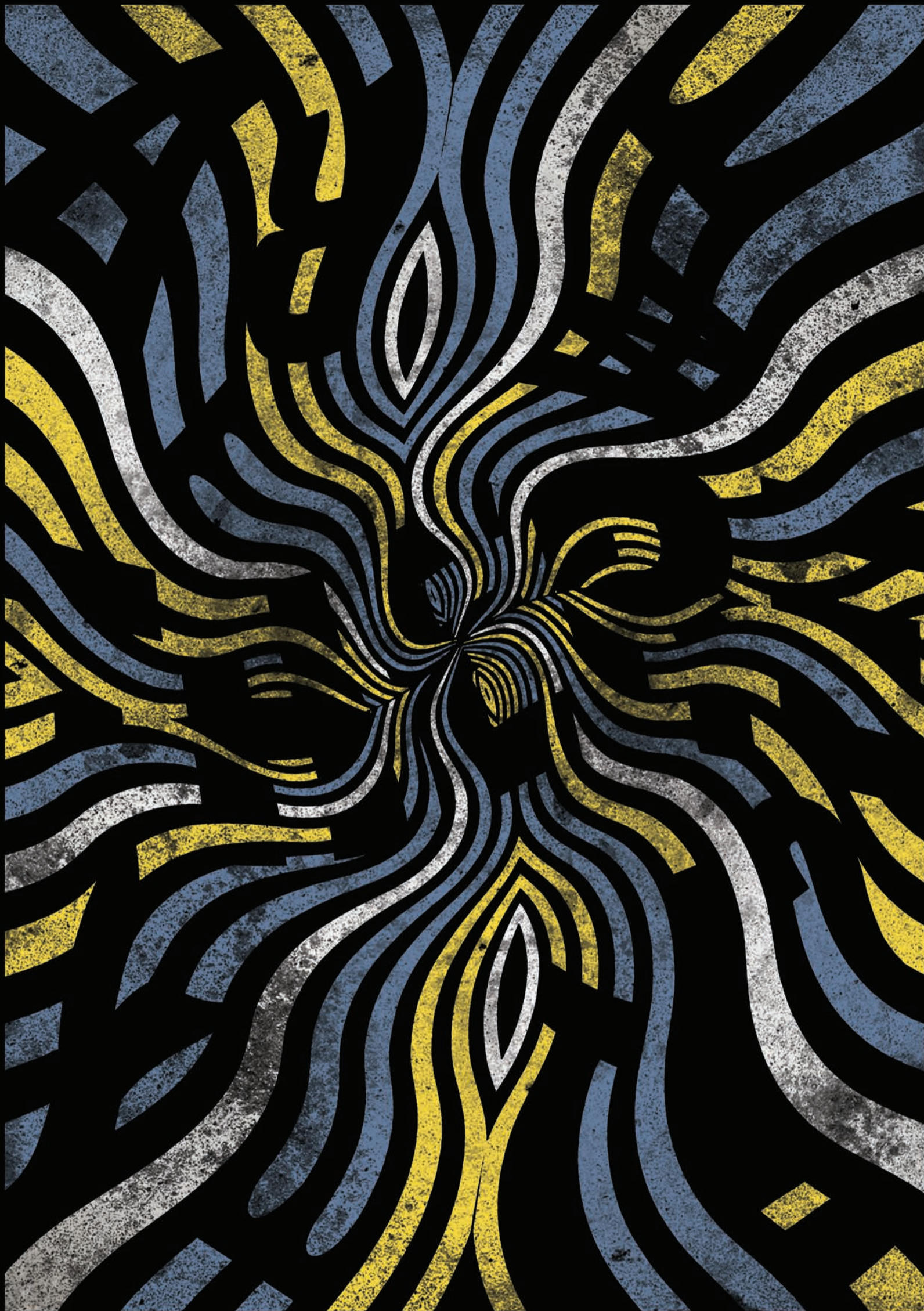
BENJAMIN QUEK
BRIDGEL SZE
CELLA YEW
CHEN QINGYAN
CHARMAINE KOK
CHEW ZILING
DOU MEIHUAN
GINNIE LEE

HAMIMAH
HUANG LEI
LEE QIU WEN
LIM EN QI
LIU YIXUAN
MINDY YAP
QUAN RUI
RACHEL CHOO

SABRINA
SHERNEESE TAN
SUM MUN CHENG
TAY JIA EENN
TEO QI YUN
VIENA LEE
WEE YEN
ZARINAH

ARE WE THERE YET!?

Understanding Paradoxes
Zeno's Paradoxes



Simply put, the dichotomy paradox refers to 'movement' as 'merely an illusion'. An impossible task of reaching one's end goal, due to the infinite number of midpoints you first have to pass through. Paradoxes are part of an interesting system of scientific theories.

In this exhibition, we look forward to immerse you in the counter-intuitive nature of quantum physics. Come join us, on a visual journey that never comes to an end!



NANYANG
TECHNOLOGICAL
UNIVERSITY
SINGAPORE

School of Art, Design
and Media
College of Humanities, Arts, and Social Sciences

20 NOVEMBER 2019
9:00AM - 5:00PM
NTU, SCHOOL OF
ART, DESIGN & MEDIA

20 NOVEMBER 2019
– 19 JANUARY 2020
9:00AM - 9:00PM
MEDIA ART NEXUS NTU
@ NORTH SPINE PLAZA
mediaartnexus.com/paradoxes

brought to you by...

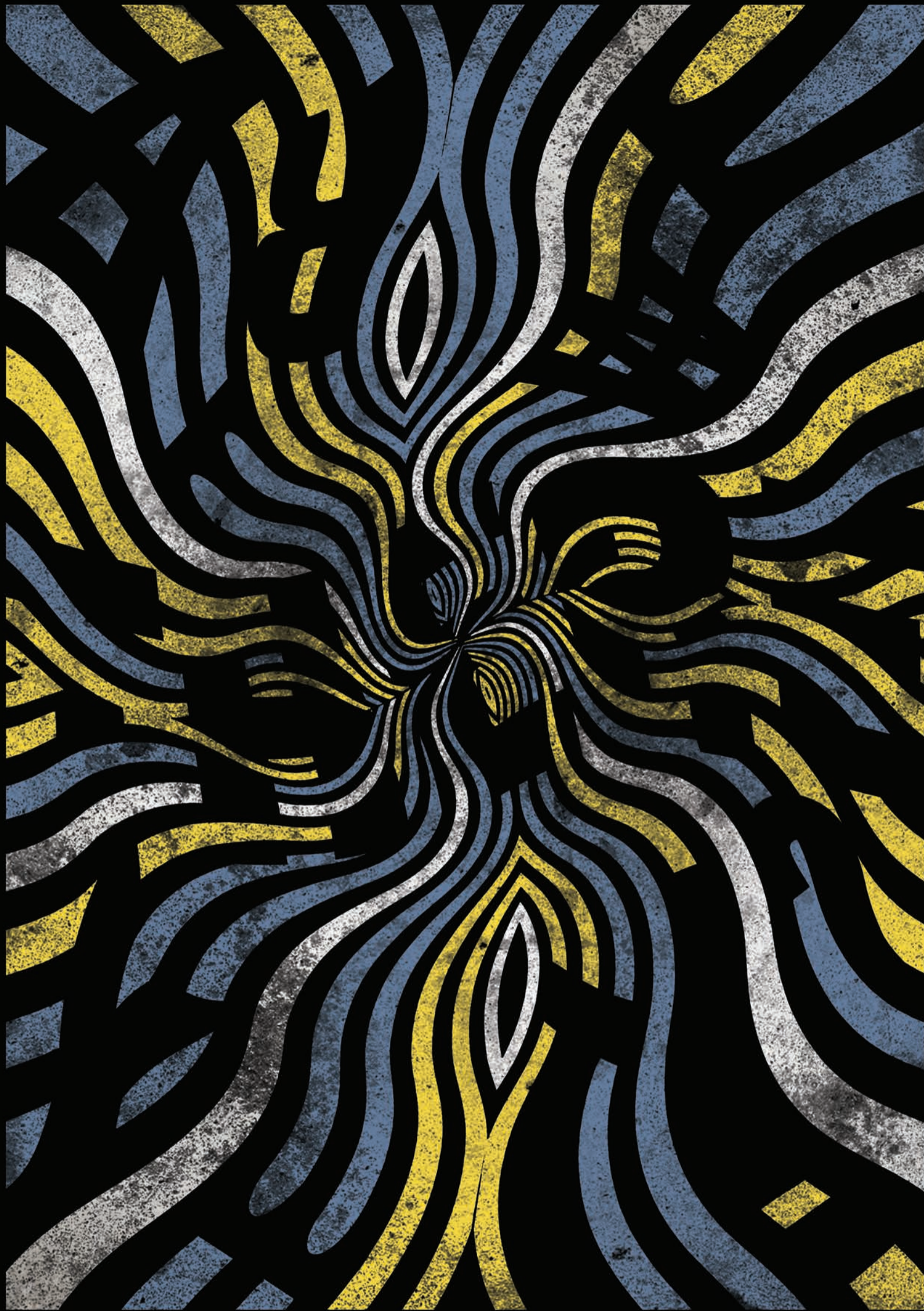
BENJAMIN QUEK
BRIDGEL SZE
CELLA YEW
CHEN QINGYAN
CHARMAINE KOK
CHEW ZILING
DOU MEIHUAN
GINNIE LEE

HAMIMAH
HUANG LEI
LEE QIU WEN
LIM EN QI
LIU YIXUAN
MINDY YAP
QUAN RUI
RACHEL CHOO

SABRINA
SHERNEESE TAN
SUM MUN CHENG
TAY JIA EENN
TEO QI YUN
VIENA LEE
WEE YEN
ZARINAH

ARE WE THERE YET!?

Understanding Paradoxes
Zeno's Paradoxes



Simply put, the dichotomy paradox refers to 'movement' as 'merely an illusion'. An impossible task of reaching one's end goal, due to the infinite number of midpoints you first have to pass through. Paradoxes are part of an interesting system of scientific theories.

In this exhibition, we look forward to immerse you in the counter-intuitive nature of quantum physics. Come join us, on a visual journey that never comes to an end!



NANYANG
TECHNOLOGICAL
UNIVERSITY
SINGAPORE

School of Art, Design
and Media
College of Humanities, Arts, and Social Sciences



20 NOVEMBER 2019
9:00AM - 5:00PM
NTU, SCHOOL OF
ART, DESIGN & MEDIA

20 NOVEMBER 2019
– 19 JANUARY 2020
9:00AM - 9:00PM
MEDIA ART NEXUS NTU
@ NORTH SPINE PLAZA

mediaartnexus.com/paradoxes

brought to you by...

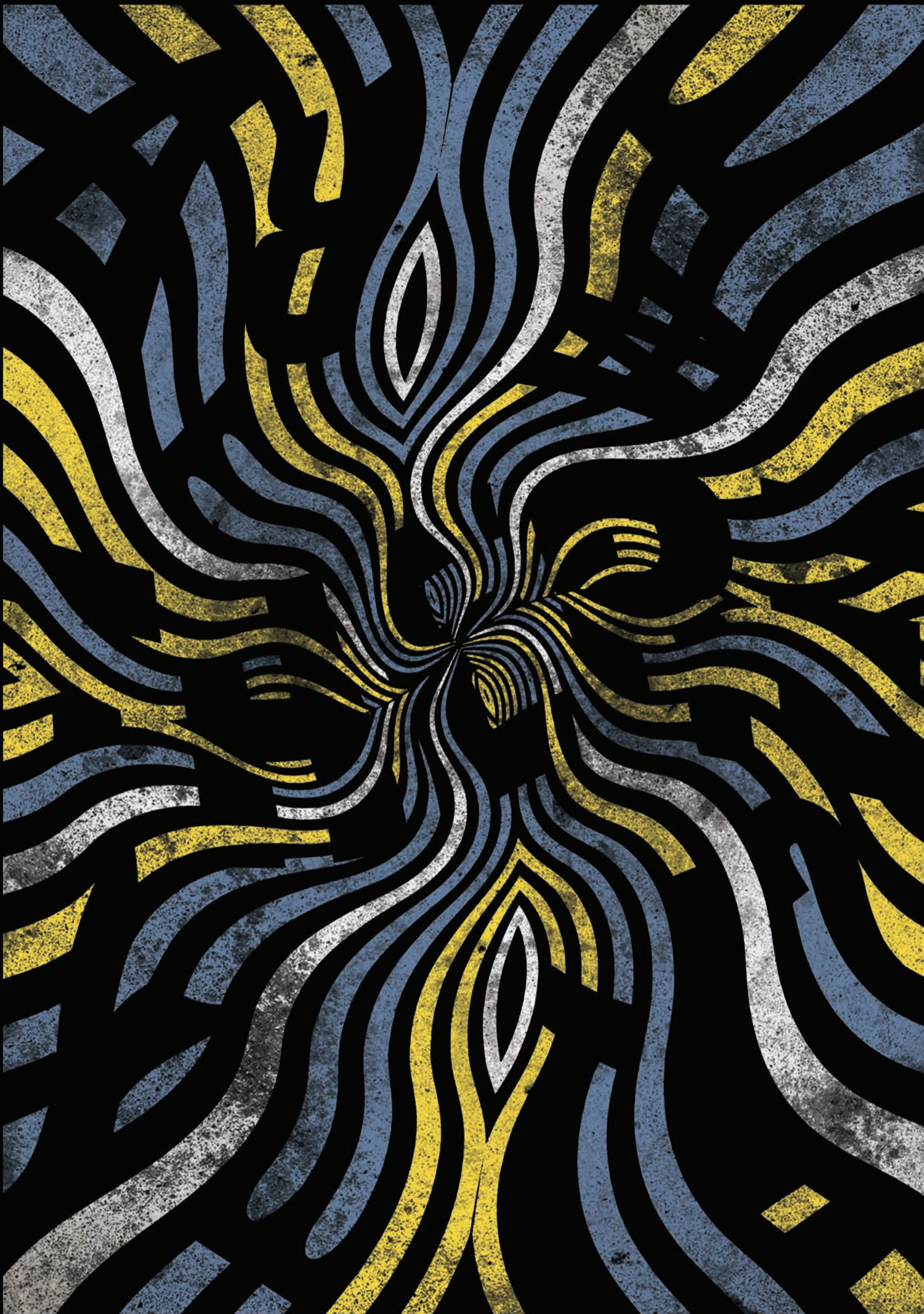
BENJAMIN QUEK
BRIDGEL SZE
CELLA YEW
CHEN QINGYAN
CHARMAINE KOK
CHEW ZILING
DOU MEIHUAN
GINNIE LEE

HAMIMAH
HUANG LEI
LEE QIU WEN
LIM EN QI
LIU YIXUAN
MINDY YAP
QUAN RUI
RACHEL CHOO

SABRINA
SHERNEESE TAN
SUM MUN CHENG
TAY JIA EEN
TEO QI YUN
VIENA LEE
WEE YEN
ZARINAH

ARE WE THERE YET!?

Understanding Paradoxes
Zeno's Paradoxes



Simply put, the dichotomy paradox refers to 'movement' as 'merely an illusion'. An impossible task of reaching one's end goal, due to the infinite number of midpoints you first have to pass through. Paradoxes are part of an interesting system of scientific theories.

In this exhibition, we look forward to immerse you in the counter-intuitive nature of quantum physics. Come join us, on a visual journey that never comes to an end!



NANYANG
TECHNOLOGICAL
UNIVERSITY
SINGAPORE

School of Art, Design
and Media
College of Humanities, Arts, and Social Sciences

20 NOVEMBER 2019
9:00AM - 5:00PM
NTU, SCHOOL OF
ART, DESIGN & MEDIA

20 NOVEMBER 2019
– 19 JANUARY 2020
9:00AM - 9:00PM
MEDIA ART NEXUS NTU
@ NORTH SPINE PLAZA

mediaartnexus.com/paradoxes

brought to you by...

BENJAMIN QUEK
BRIDGEL SZE
CELLA YEW
CHEN QINGYAN
CHARMAINE KOK
CHEW ZILING
DOU MEIHUAN
GINNIE LEE

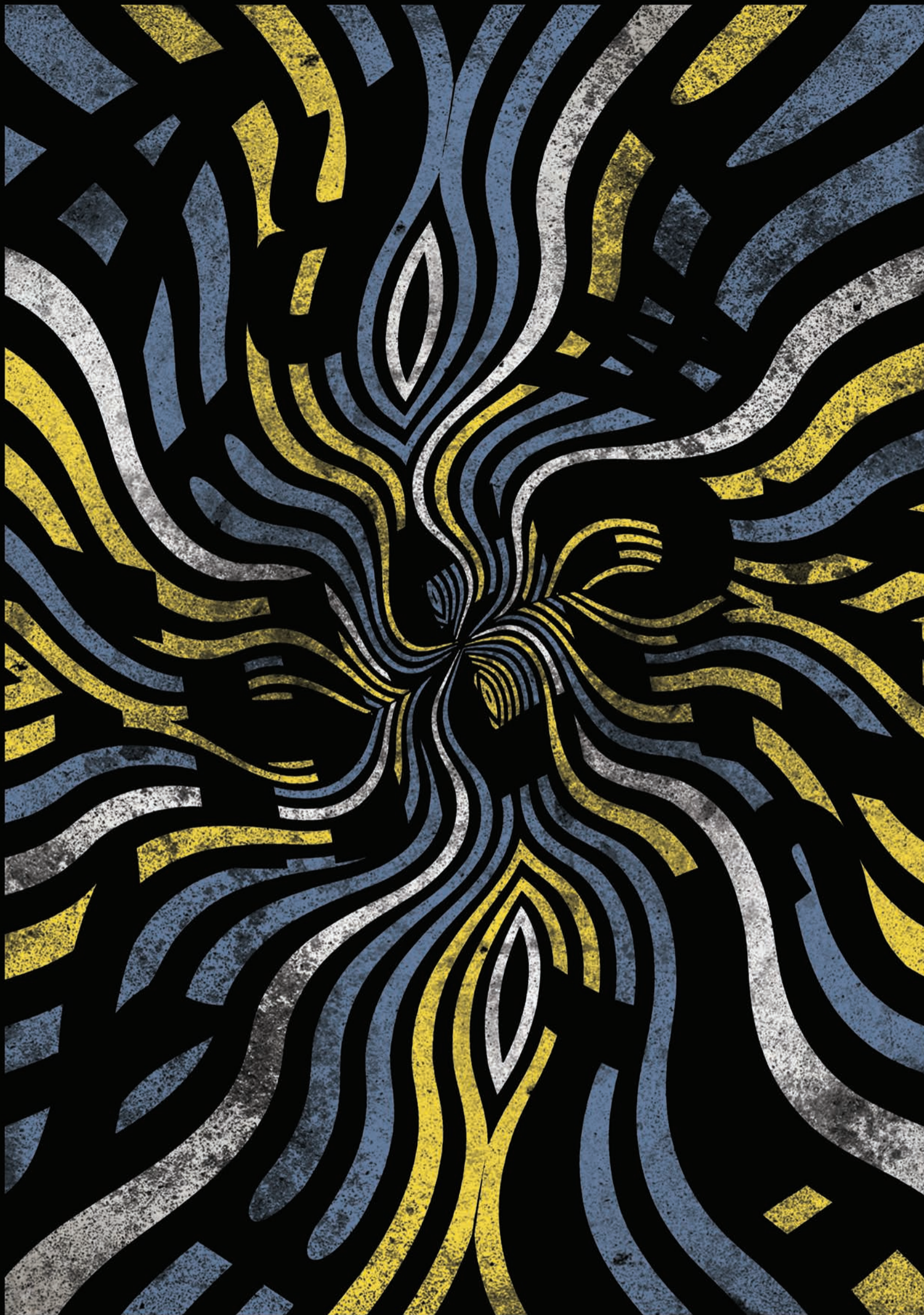
HAMIMAH
HUANG LEI
LEE QIU WEN
LIM EN QI
LIU YIXUAN
MINDY YAP
QUAN RUI
RACHEL CHOO

SABRINA
SHERNEESE TAN
SUM MUN CHENG
TAY JIA EENN
TEO QI YUN
VIENA LEE
WEE YEN
ZARINAH



ARE WE THERE YET!?

Understanding Paradoxes
Zeno's Paradoxes



Simply put, the dichotomy paradox refers to 'movement' as 'merely an illusion'. An impossible task of reaching one's end goal, due to the infinite number of midpoints you first have to pass through. Paradoxes are part of an interesting system of scientific theories.

In this exhibition, we look forward to immerse you in the counter-intuitive nature of quantum physics. Come join us, on a visual journey that never comes to an end!



NANYANG
TECHNOLOGICAL
UNIVERSITY
SINGAPORE

School of Art, Design
and Media
College of Humanities, Arts, and Social Sciences

20 NOVEMBER 2019
9:00AM - 5:00PM
NTU, SCHOOL OF
ART, DESIGN & MEDIA

20 NOVEMBER 2019
– 19 JANUARY 2020
9:00AM - 9:00PM
MEDIA ART NEXUS NTU
© NORTH SPINE PLAZA
mediaartnexus.com/paradoxes