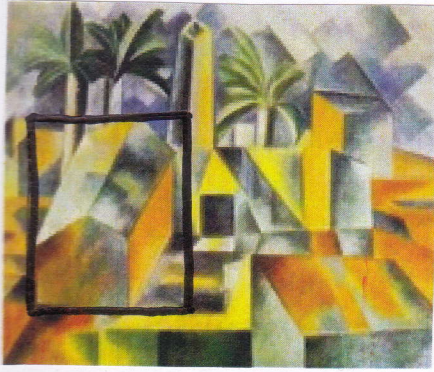


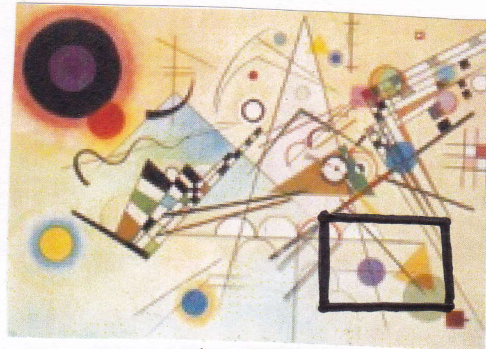
HOW ARE MARKS USED IN PAINTINGS?

Marks are not just used to form the pictures that artists create, they also help add expression. Some marks may express movement while others express stability & strength. Artists can also use slashes as marks to express anger or curves as marks to express ~~anger or curves~~ calm or peace.

Marks can be descriptive, expressive, conceptual, or symbolic. They may be **BOLD** and clearly state the intention or may be subtle that the concept is only perceived by the viewers' subconscious.



www.artfactory.com/art_appreciation/artmovements/cubism.htm

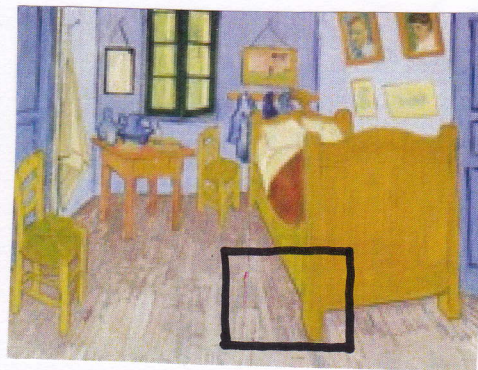


<https://www.biblio.org/wm/paint/austr/kandinsky>

Pablo Picasso and Kandinsky used solid lines and distinct shapes in much of their artwork. Yet despite the fact that they used the same style of mark, the two artists have distinctly different styles.



"Starry Night, 1889"



"The Bedroom, 1889"

www.moma.org/vangogh

www.moma.org/vangogh

Vincent van Gogh has one of the most distinct marks in the world. You can see in his paintings like "Starry Night" 1889, which is filled with swirling brush strokes that became a signature to his style. In works like "The Bedroom" 1889, the marks have less curve, but each brush stroke is still distinct.

