

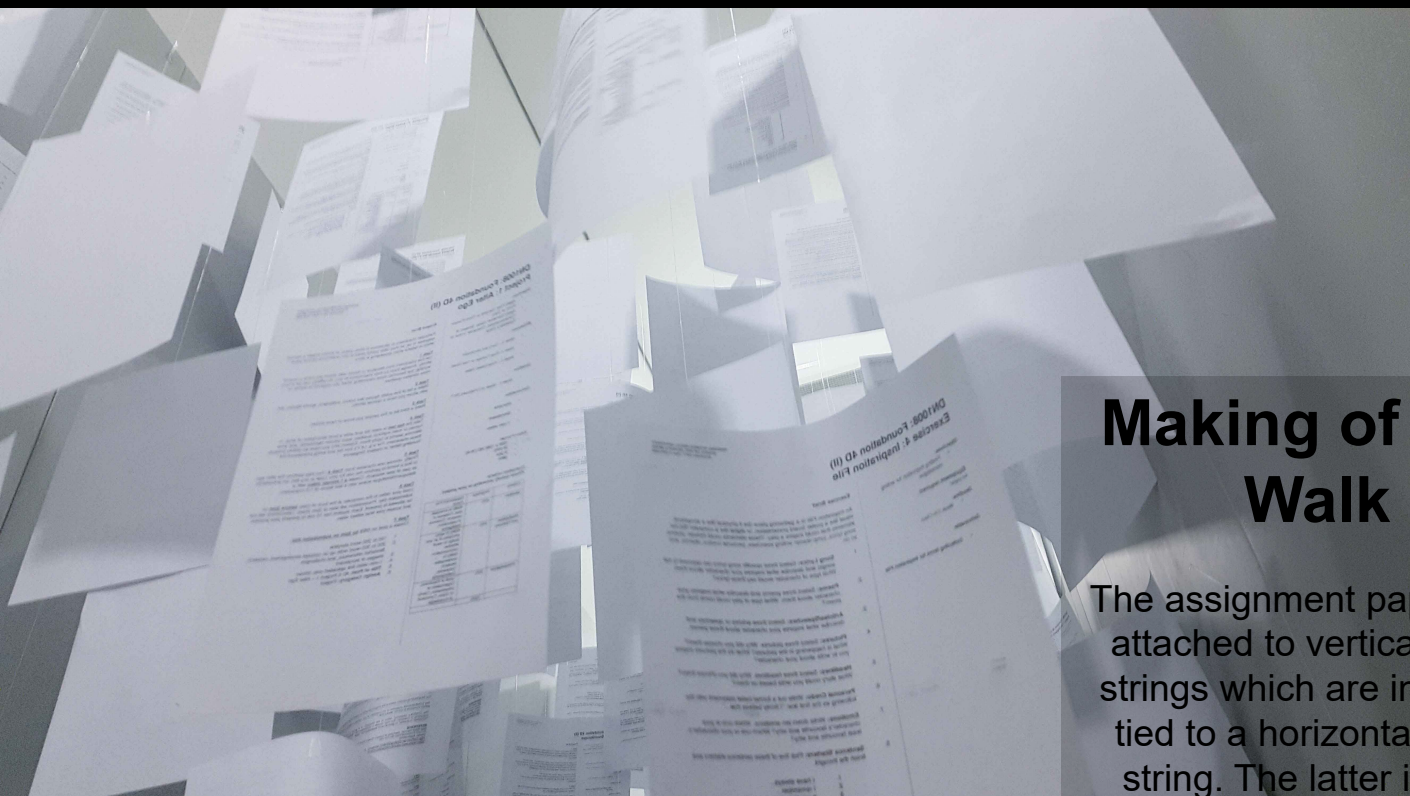
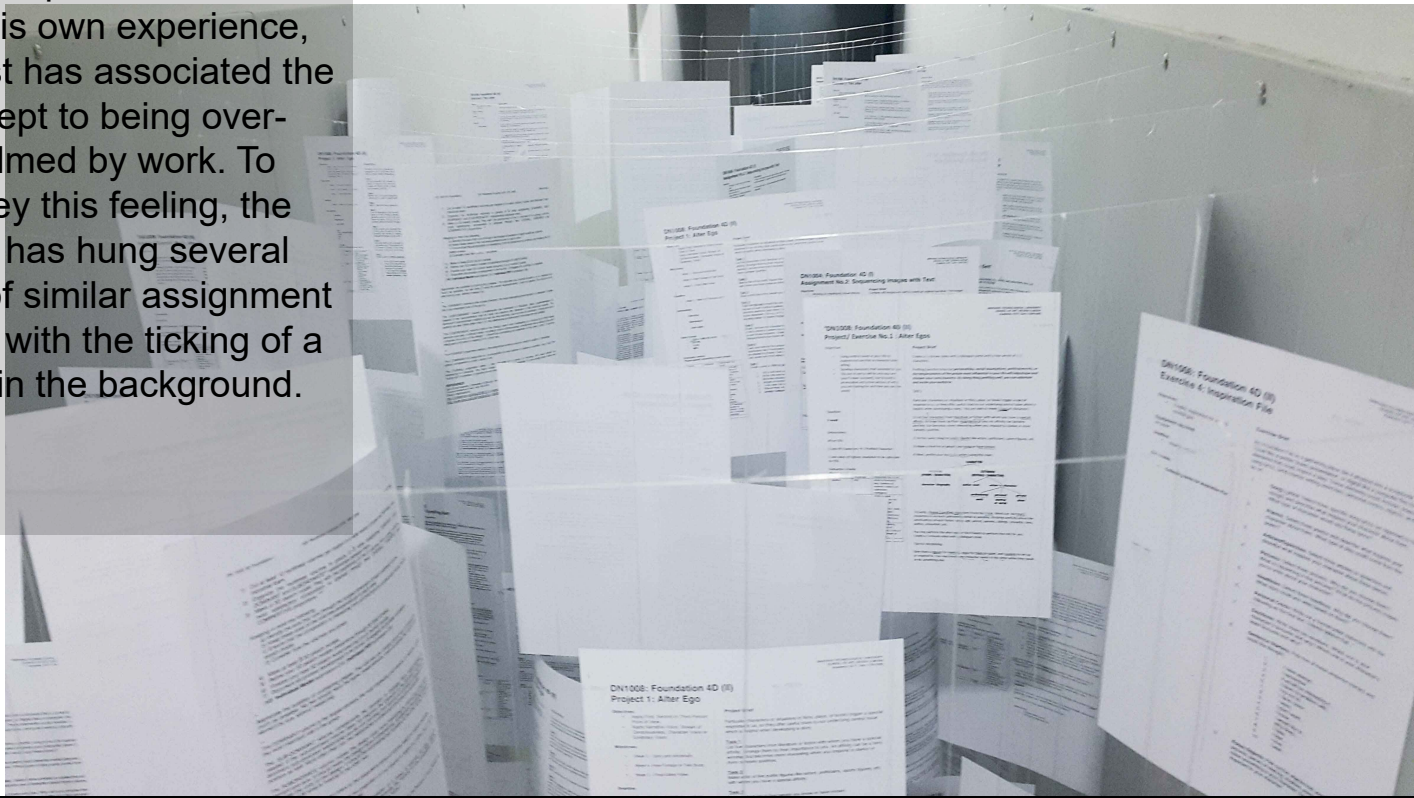


# HELL WALK

Fok-Chi-Seng Fok Kow  
U1630066B

# Brief

*Hell Walk* is an immersive installation which critiques the concept of loss. Based from his own experience, the artist has associated the concept to being overwhelmed by work. To convey this feeling, the artist has hung several layers of similar assignment papers with the ticking of a clock in the background.



## Making of Hell Walk

The assignment papers are attached to vertical nylon strings which are in turned tied to a horizontal nylon string. The latter is then hanged by knotting both ends of the wire to nails on the panel. The ticking sound of the clock is played through a laptop, placed at one end of the installation.

# 162

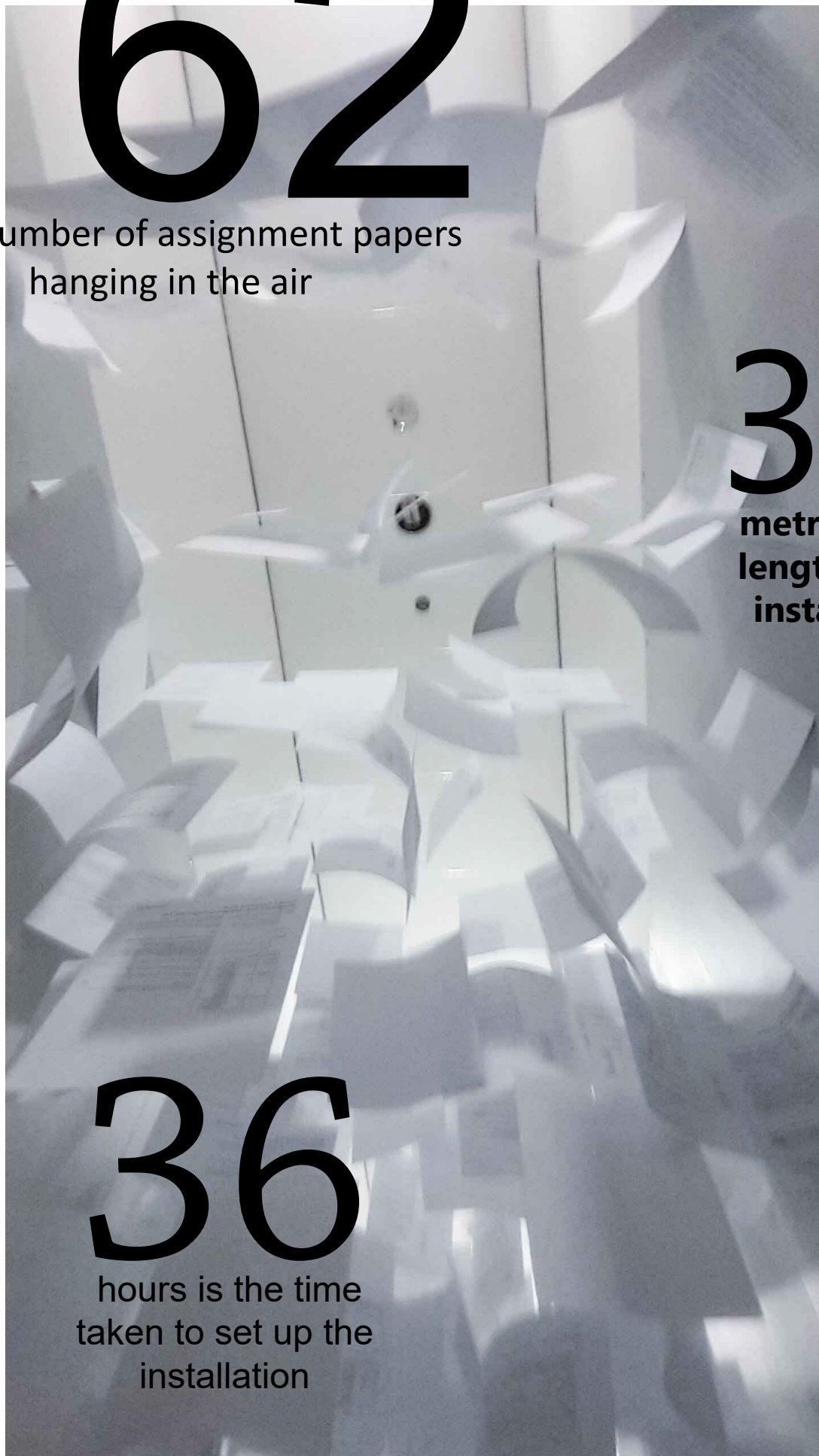
is the number of assignment papers  
hanging in the air

# 3.2

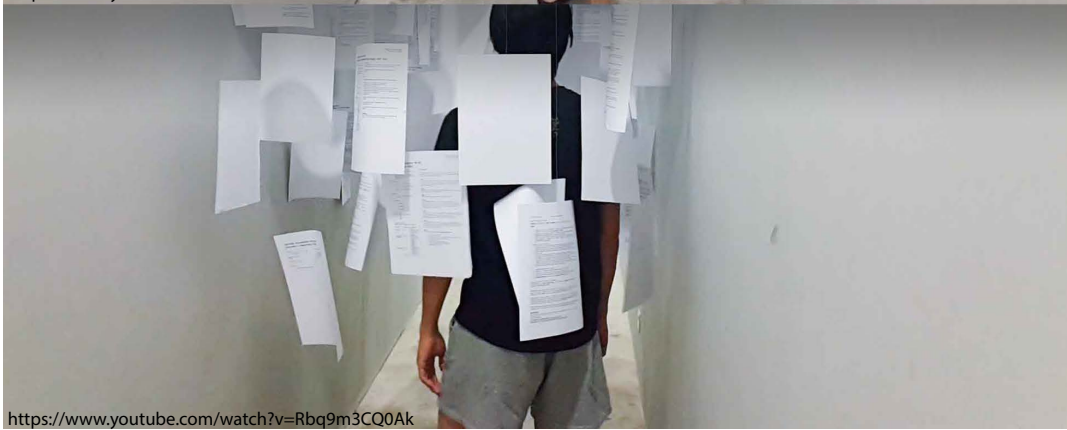
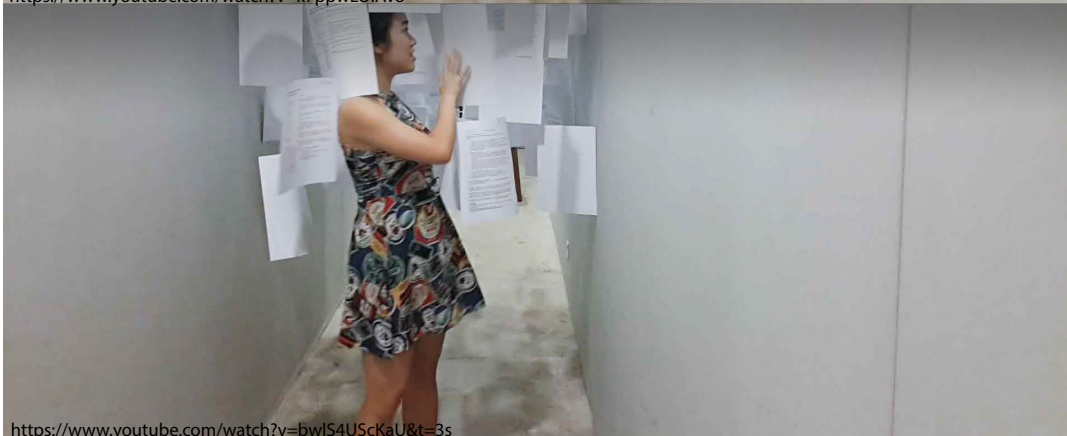
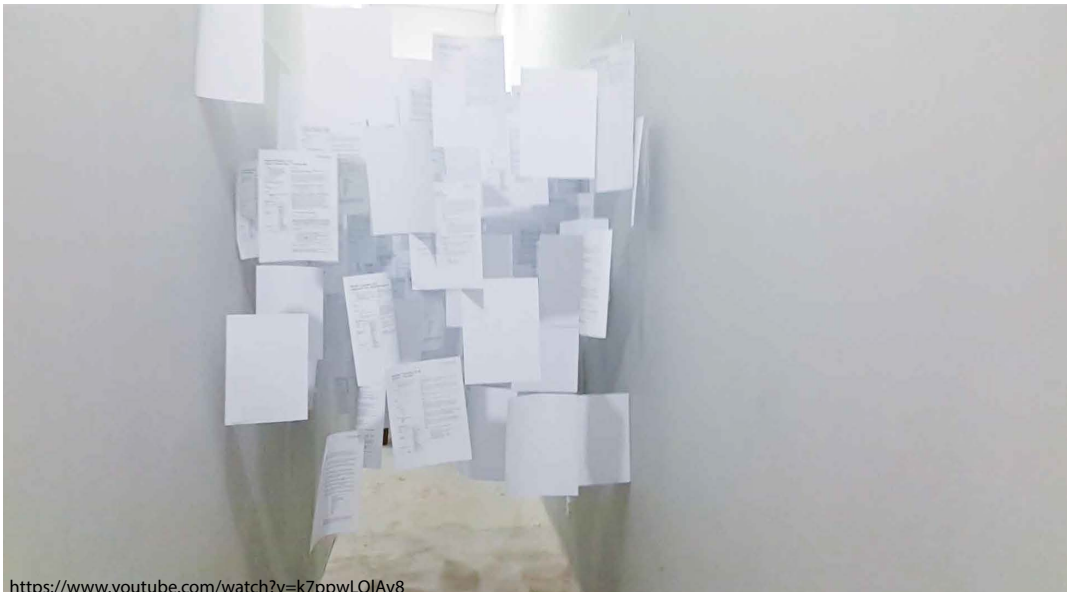
metres is the  
length of the  
installation

# 36

hours is the time  
taken to set up the  
installation



# EXPERIENCE THE WALK



On the side are videos (link at the corner of each picture) of a first person view and 3 other persons going through the installation.