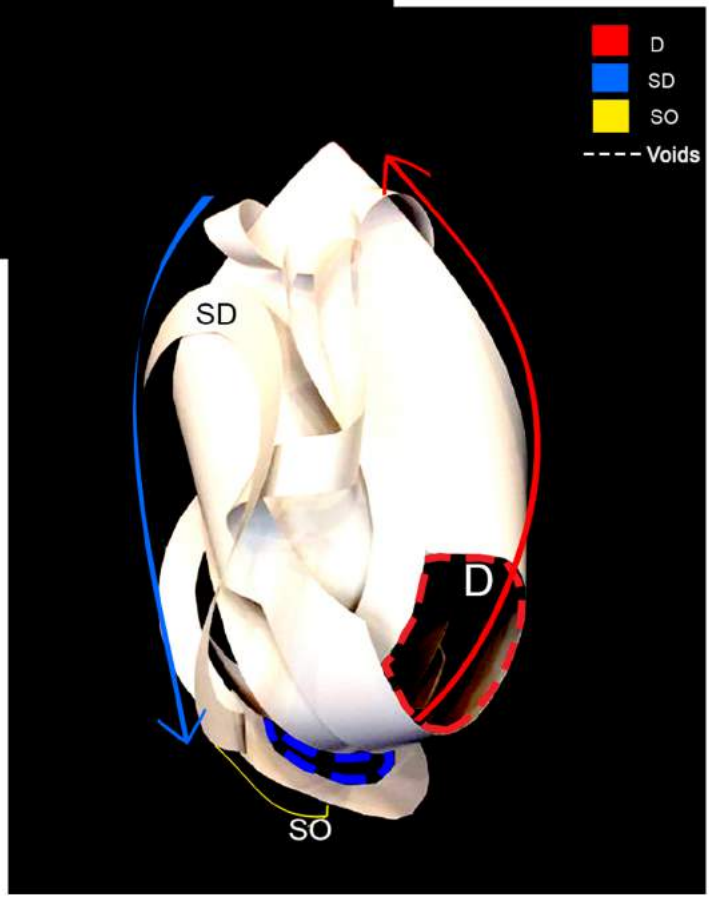
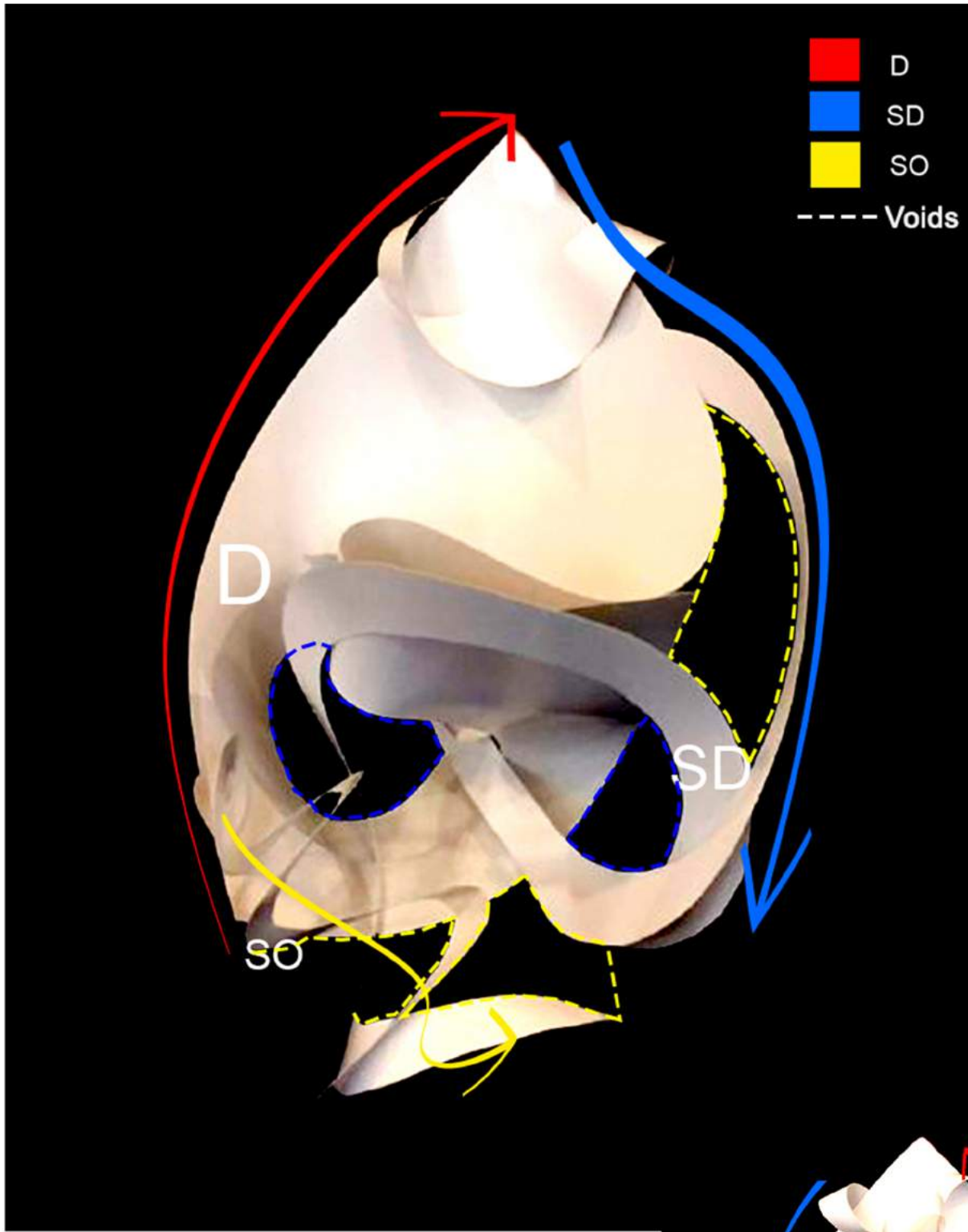


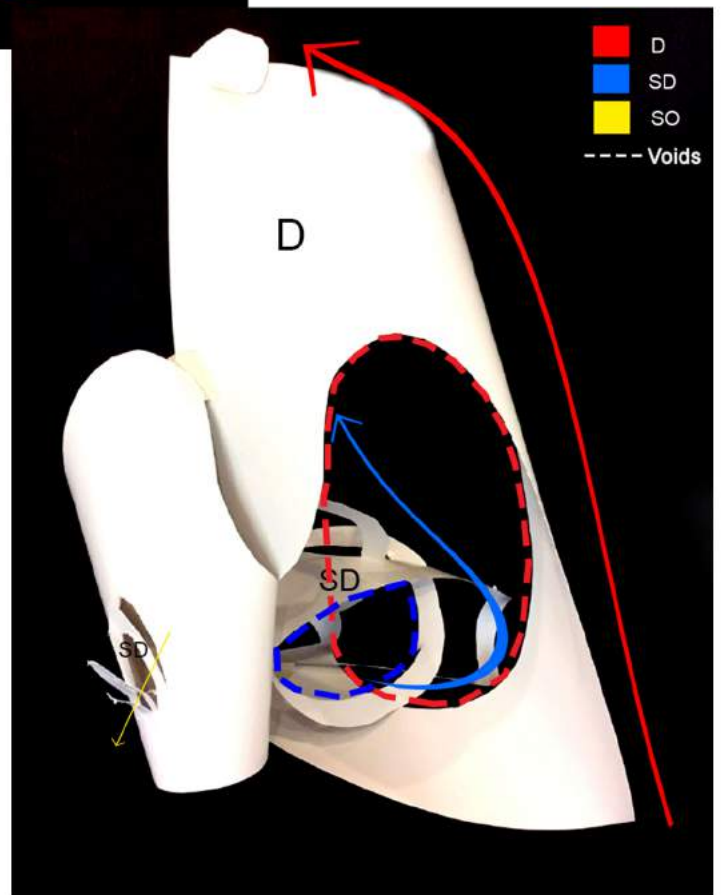
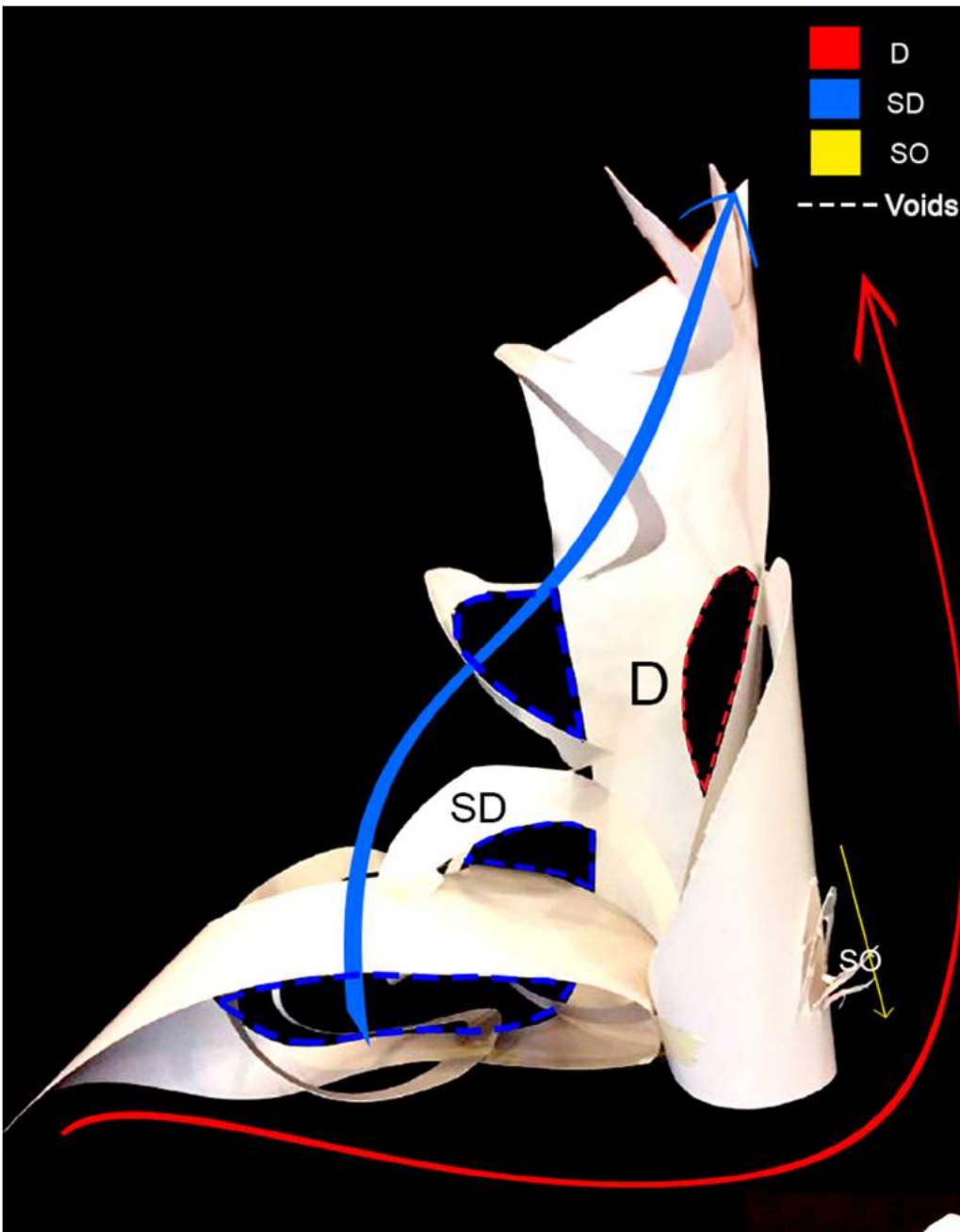


“SPARKLE PARTY”
PLANAR CONSTRUCTION

A G.B.H. COLLABORATION
GLORIA , BAO LE , HANA



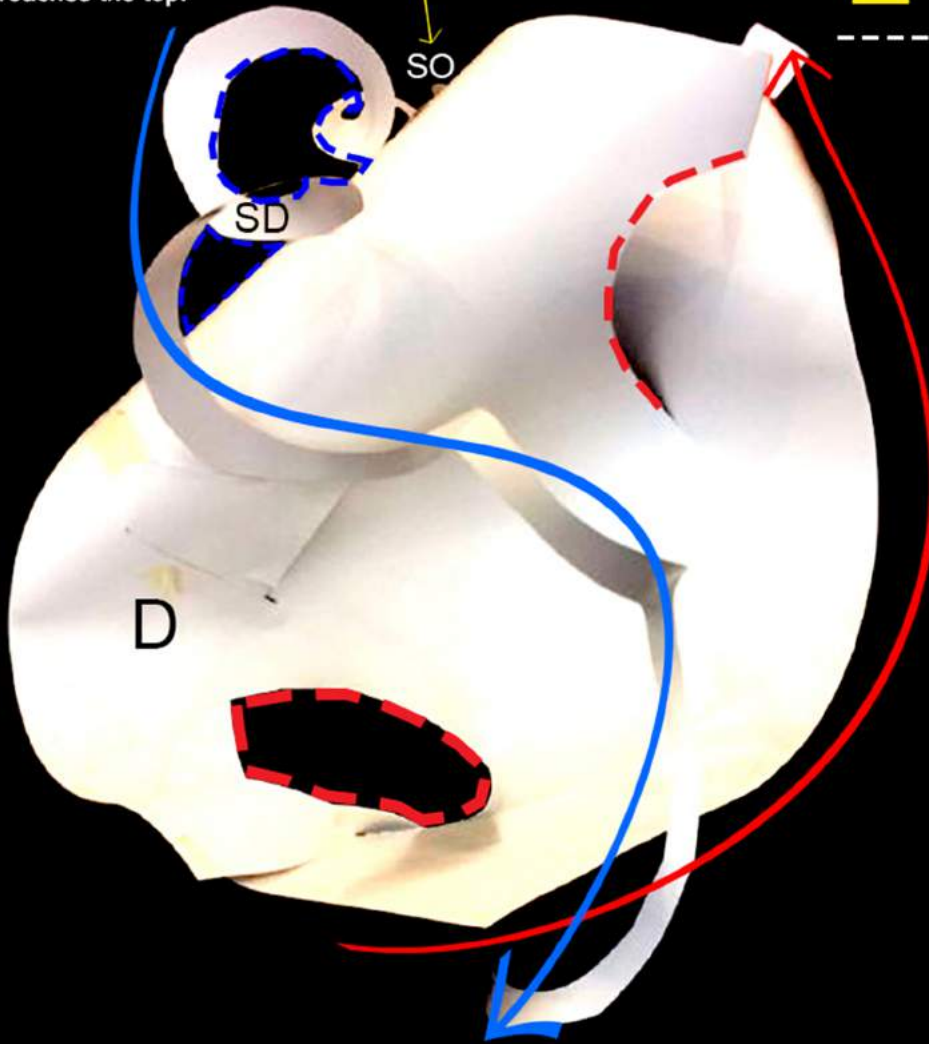
Sketch Model #1
Hana



Sketch Model #2
Bao

We agreed to make the spirals slightly longer and bigger overall and making it more tapered as it reaches the top.

- D
- SD
- SO
- Voids

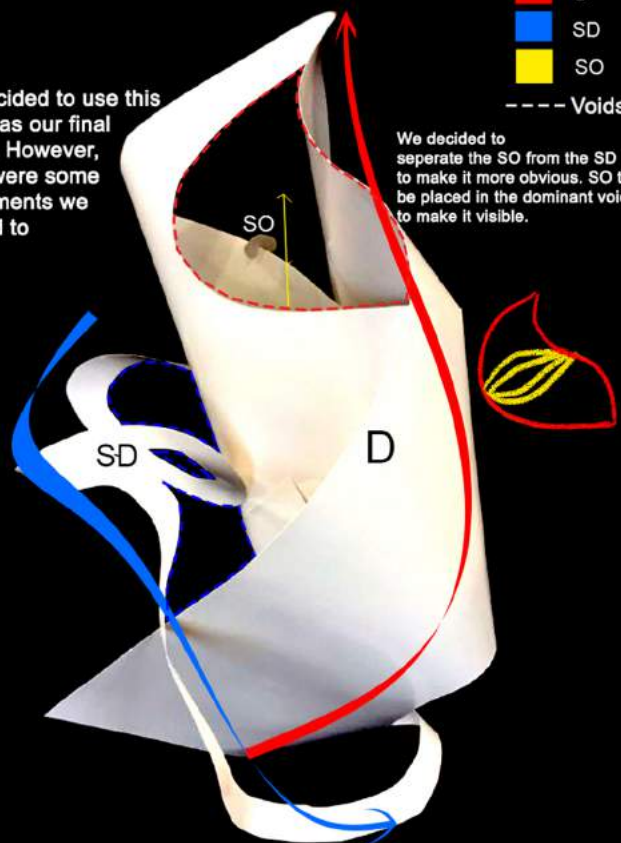


Instead of putting the spiral at the back, we decided to put it through the void at the bottom of the dominant.

Sketch Model #3 Gloria

We decided to use this model as our final model. However, there were some adjustments we wanted to make.

- D
- SD
- SO
- Voids



We decided to separate the SO from the SD to make it more obvious. SO to be placed in the dominant void to make it visible.

FINAL MODEL



Materials used:

D - Tinted Transparency with red gradient spray paint

SD - Copper Plate, Fairy Lights

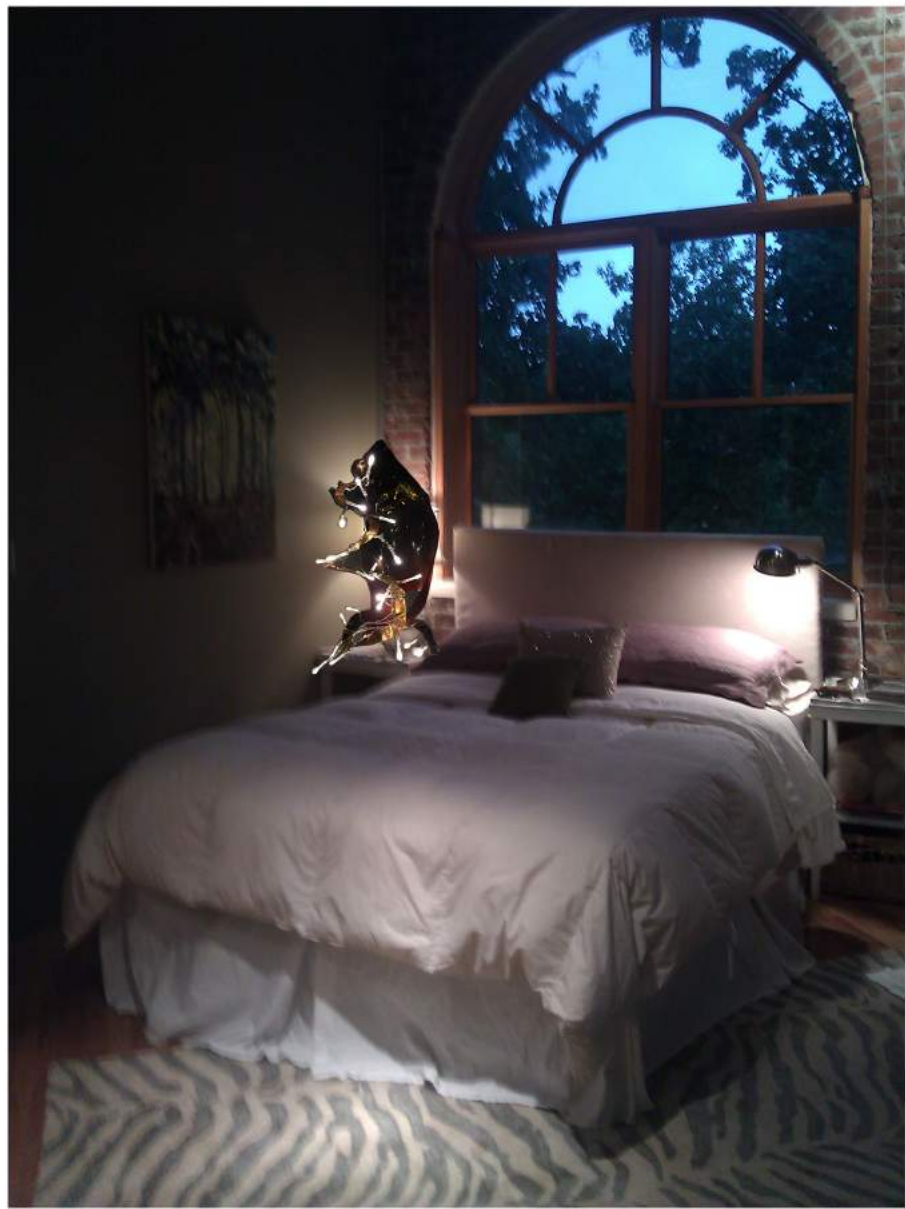
SO - Gold paper

We left some parts of the dominant see through to enable people to view the sparkling SO. We decided to use a gold SO because we thought that it will catch the light perfectly. The SD was also of a metallic surface, to diffuse the fairy lights. We have 3 voids for our dominant piece (the concaved D, the oval shaped void at the bottom and the D shaped void at the top). The spiral void intersects the concaved void of the D. We also thought that the colours red and gold goes quite well together



Small Application Bedside Lamp

The main application for our group's final model was to use it as a bedside lamp. The way it hangs and the intensity of the light is enough for it to work as a bedside lamp



Small Application Lantern

We also thought of using it as a lantern as it is of appropriate size and easy to bring it around.





**Big Application
“Volcanic Splash” @ Water Park**