

EST. JOANNE 1995  
THOMPSON

**MARA PARIS**

Cecilia HyunJae Cho (U1731401K)

Creative Industry Presentation

## Joanne Thompson

Founder / Jewelry Designer / Craftsman



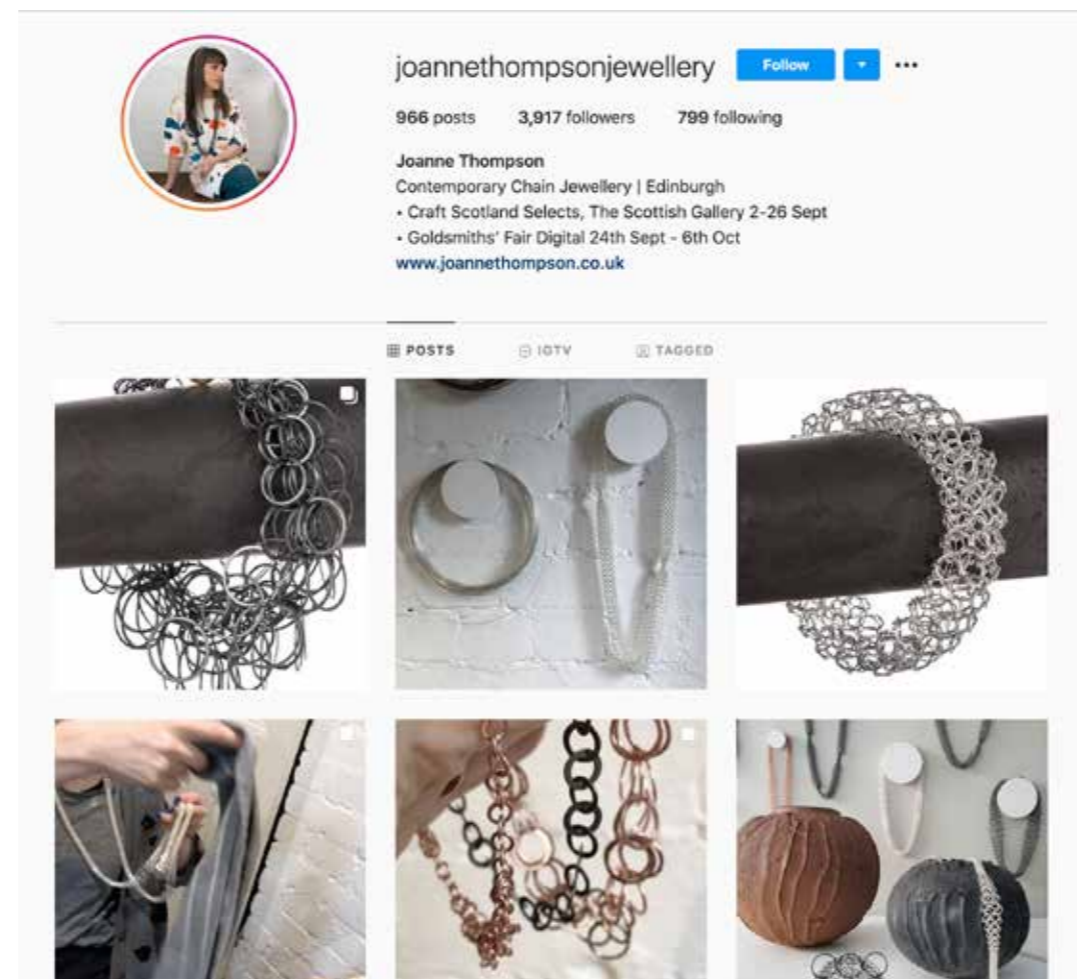
## Ayça Özbank Taşkan

Founder / Jewelry Designer / Architect



# INTRODUCTION

EST. JOANNE THOMPSON 1999



Edinburgh College of Art / Royal College of Art  
/ "Setting Up Grant" by the Crafts Council /  
Ancient Chain Maille Patterns / Handcrafted

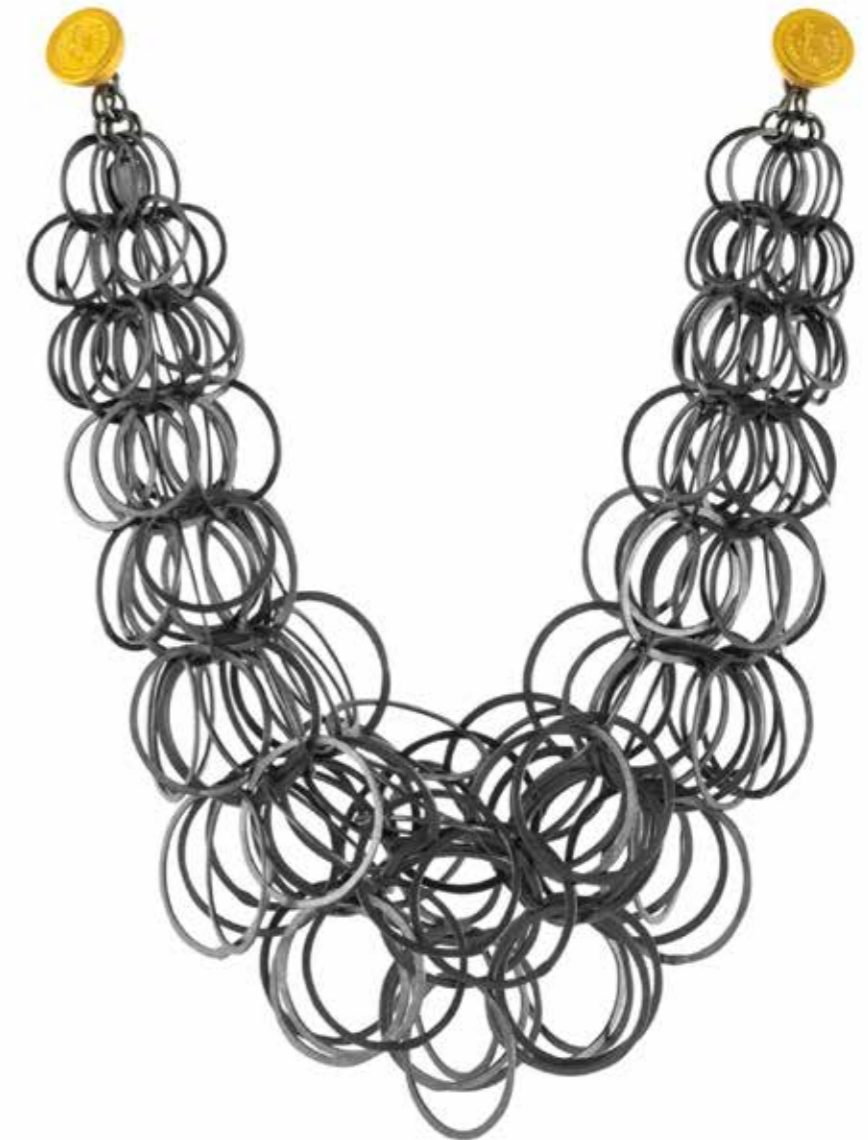
# EXAMPLES OF WORK



Hopper Sculptural Statement Necklace



Darrow Long Double Cluster Chain Earrings



Aden Bracelet

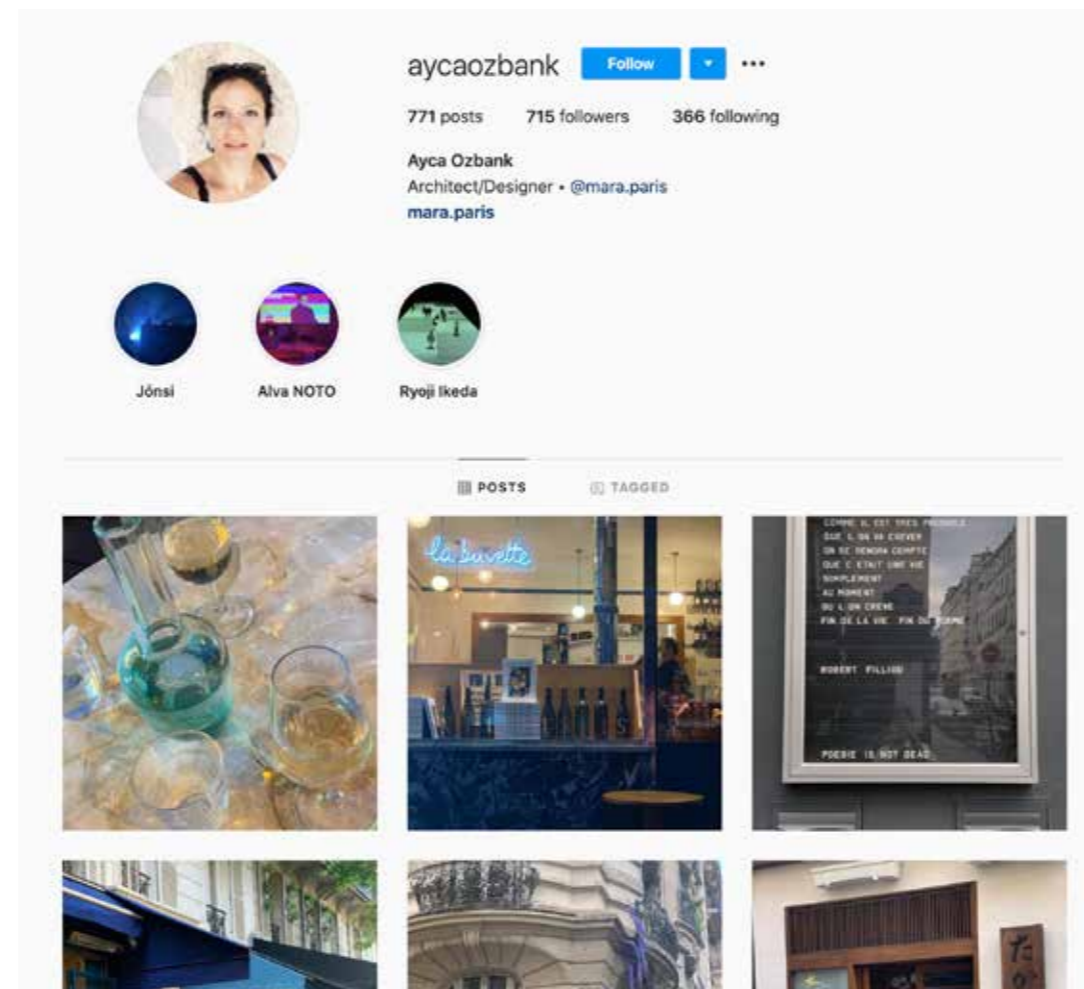
# INTIMATE CRAFT



Genuine love for the step by step process of designing and creating her sculptural jewelry pieces.

# INTRODUCTION

## MARA PARIS



Born in Istanbul / Inspiration from  
Different Cultures / Jewelry Pieces Homage  
to Architecture / Multidisciplinary

# EXAMPLES OF WORKS



Mies Ring with Citrine



Muse Necklace



Jean Earrings

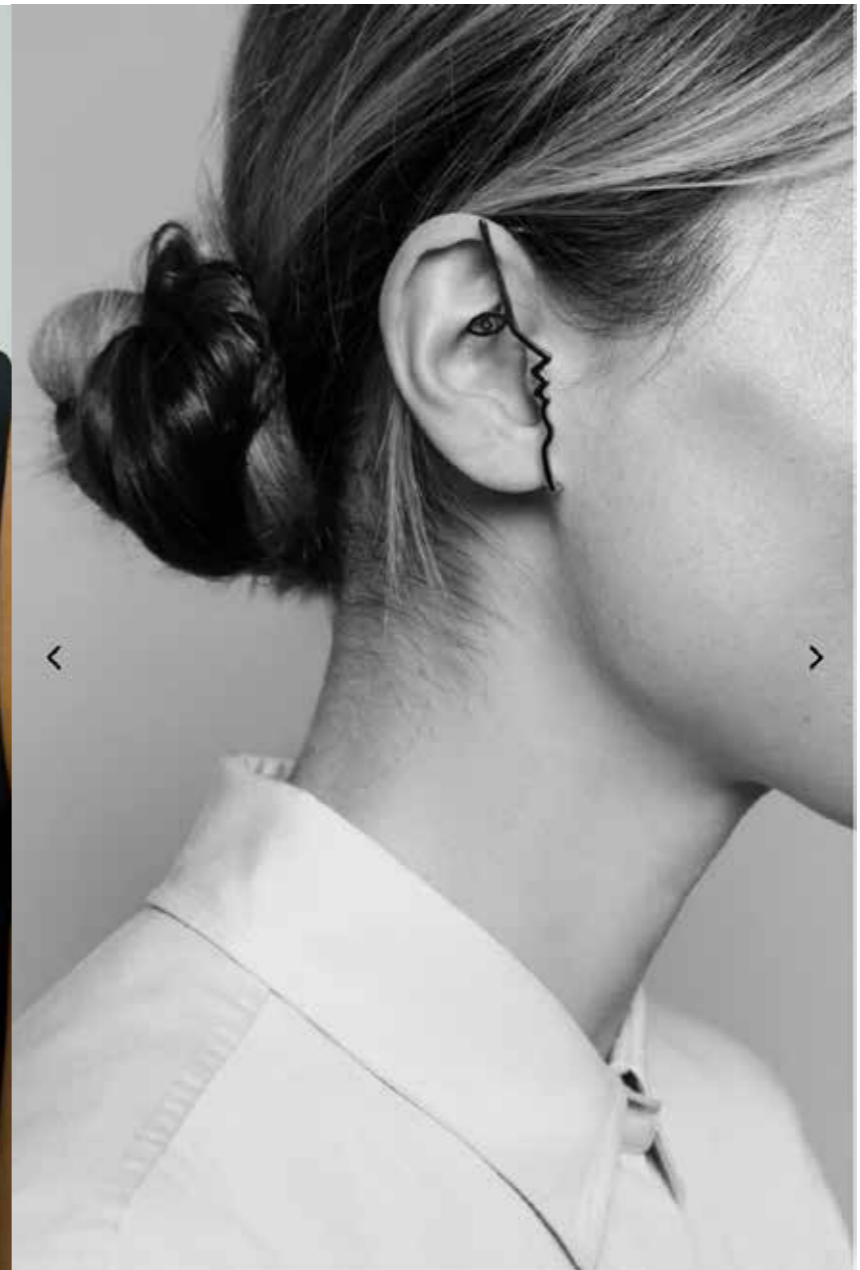
# ADORATION



Dina Necklace



Poem Necklace



Dina Ear Cuff