

FASHION



NEW TREND

Hairpiece that compliments bunned up hairdos.

Continue on to find out more!

By Teri Ng & Norafizah

ACCESSORY

Featuring natural and industrial materials, this hair piece contrasts yet complements one another.

Dominant : Wood

Subdominant : Plastic and Wire

Subordinate : Rose Gold Foil





Dominating Wooden Curve

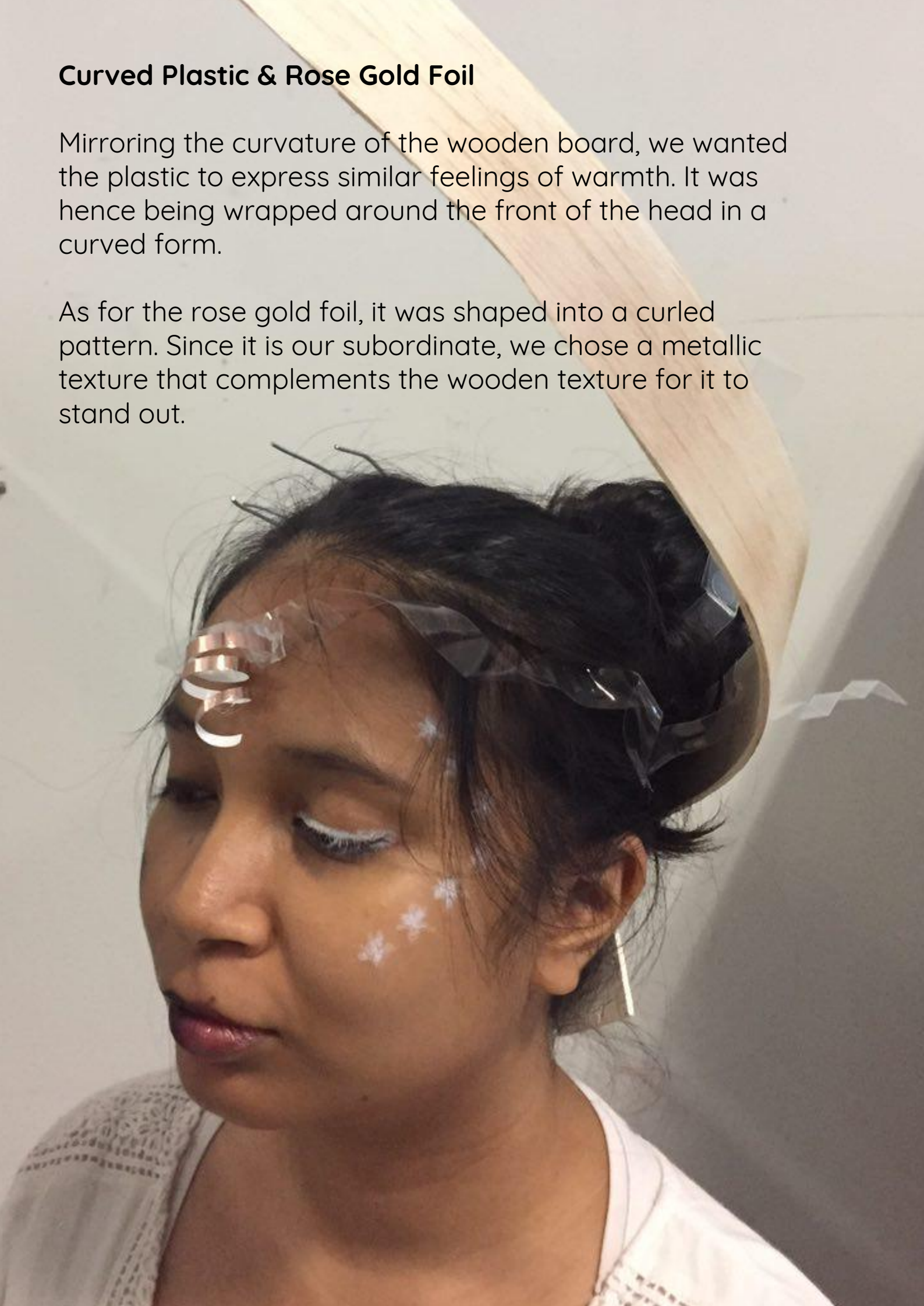
Since both of our good scents brought us comforting feelings of warmth and being wrapped in joyful memories, the curvature of the wood was brought in to depict that. As the dominant component, we wanted it to wrap around Fizah's head.

In terms of material, we chose wood to signify the natural smell of our scents; coconut soap (Fizah) and celery (Teri).

Curved Plastic & Rose Gold Foil

Mirroring the curvature of the wooden board, we wanted the plastic to express similar feelings of warmth. It was hence being wrapped around the front of the head in a curved form.

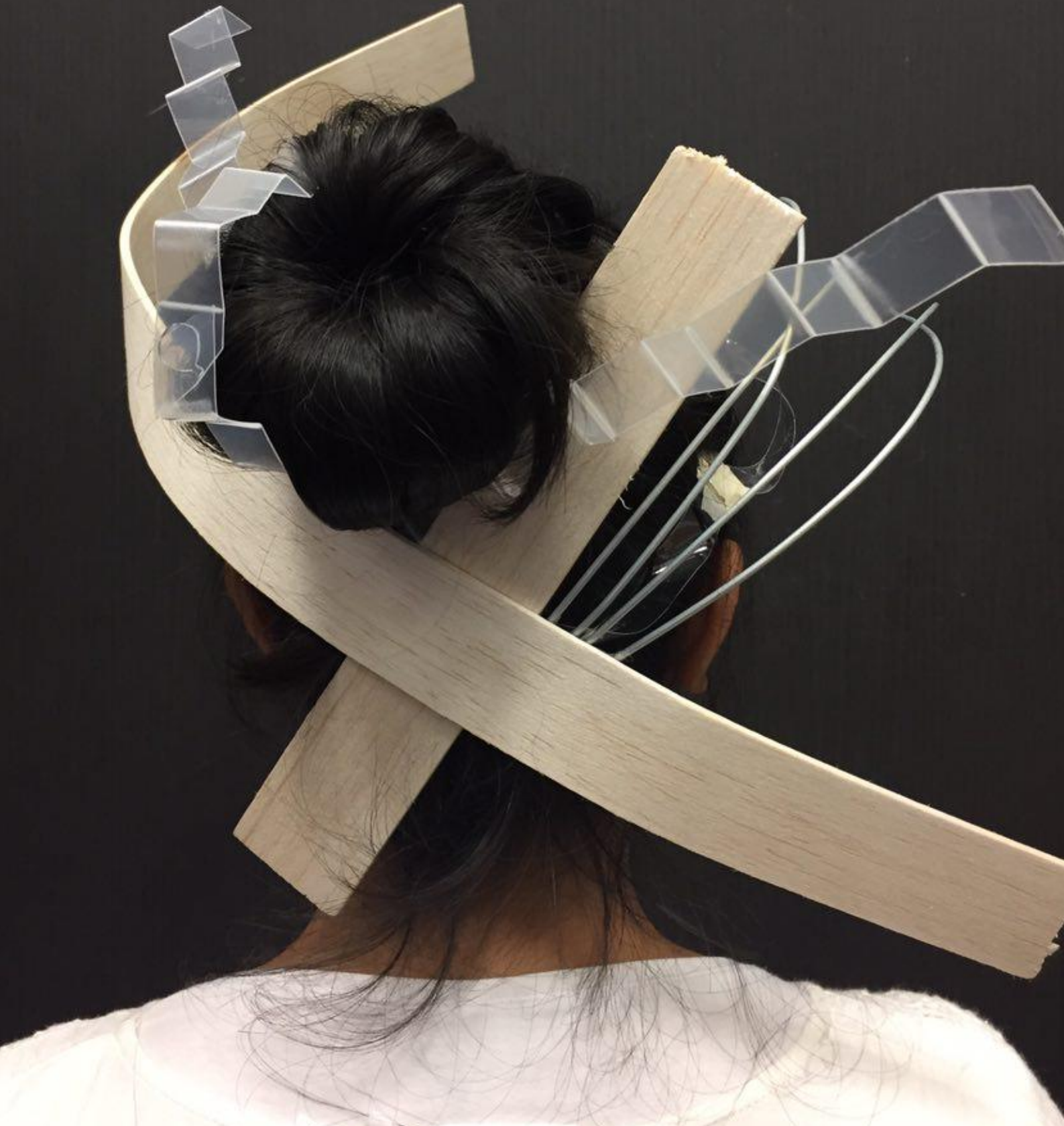
As for the rose gold foil, it was shaped into a curled pattern. Since it is our subordinate, we chose a metallic texture that complements the wooden texture for it to stand out.



Plastic Bent Planes

Aimed at representing our bad scents which are sharp, the plastic planes were bent. The bad scents were nail polish remover (Fizah) and coriander (Teri).

The choice of plastic, which is a manmade material, was to signify the industrial smell of nail polish remover (Fizah).



Curved Wire

Representing the good smell, the idea was to bend the wire following the curve of Fizah's head, hence expressing the wrapping feeling.

Similar to plastic, the wire was chosen to represent the industrial scent as a man made material.





Straight Wooden Board

The rigidity of the straight board represents our bad smell which does not have many dimensions to its smell. The smells are singular uniform scent that does not contain much depth compared to our good scent which has different layers to the smell.

THE END