



DOT, LINE AND SHAPE



Dot, Line and Shape

- Basic elements/building blocks of design
- **Elements** are components or parts that can be isolated and defined in any visual design or work of art.



Images

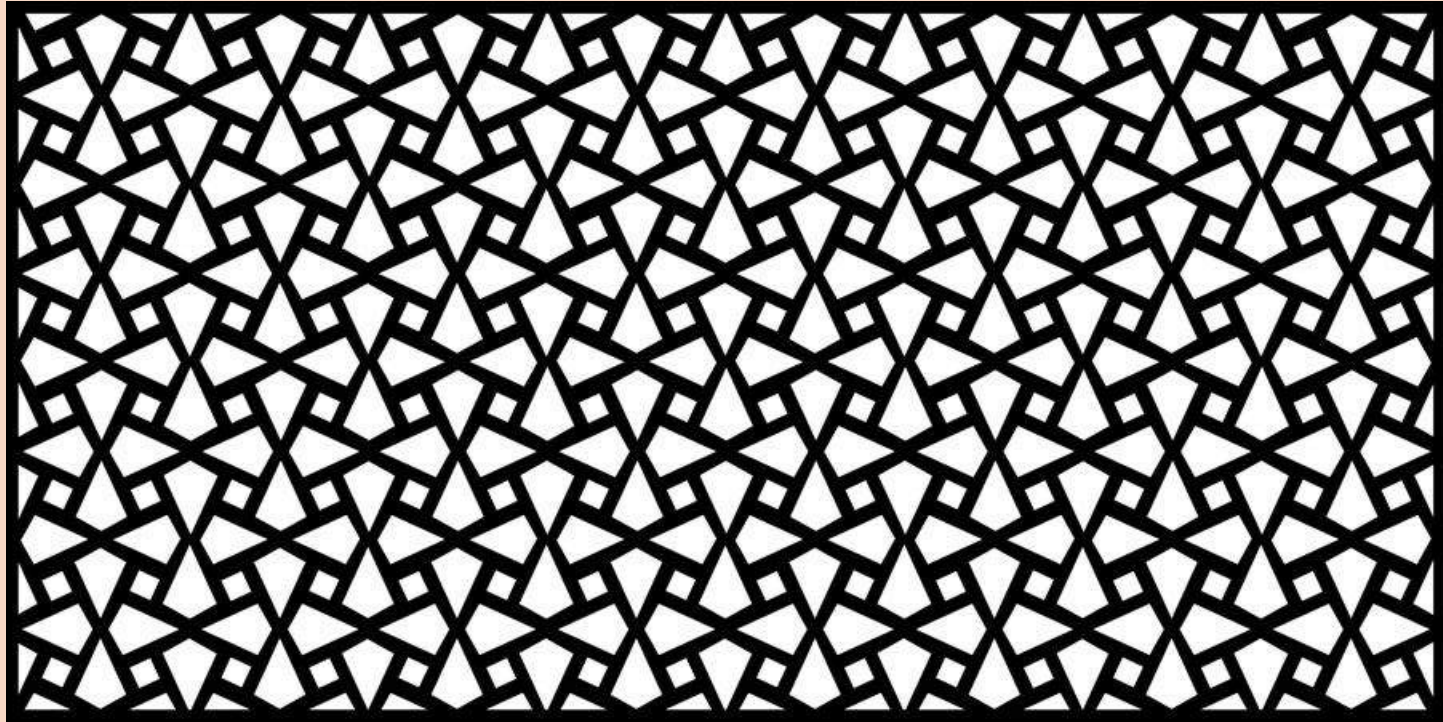
- images, icons, textures, patterns, diagrams, animations, and typographic systems



Icons



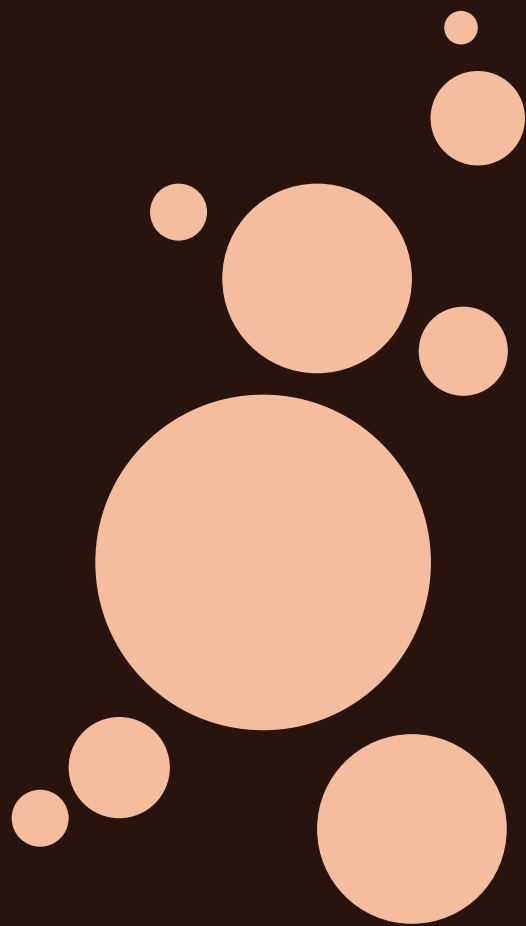
Textures



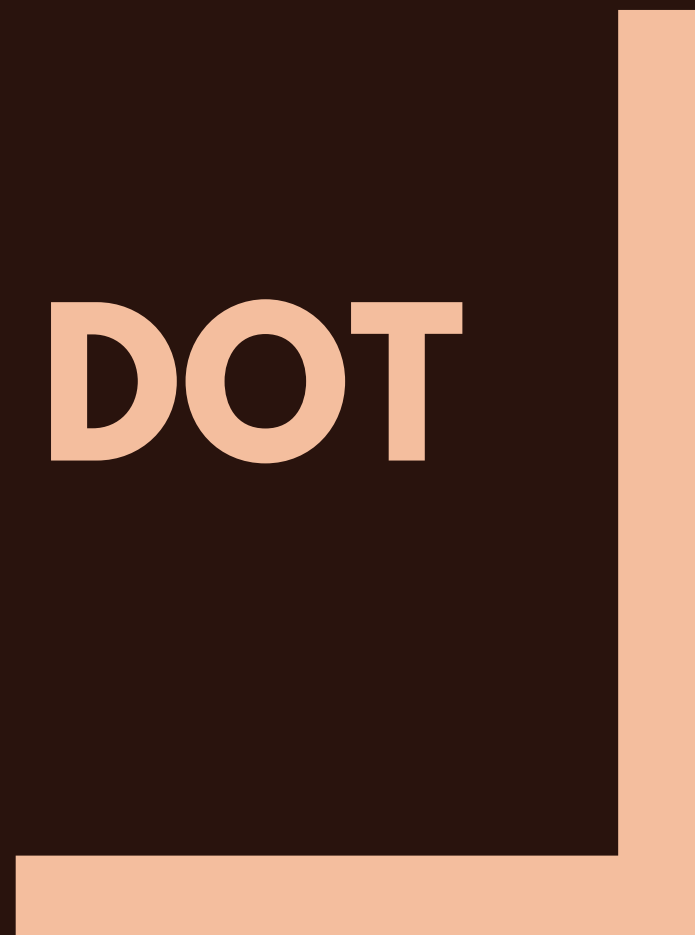
Patterns

What is this?





DOT



**You're
Pointless.**

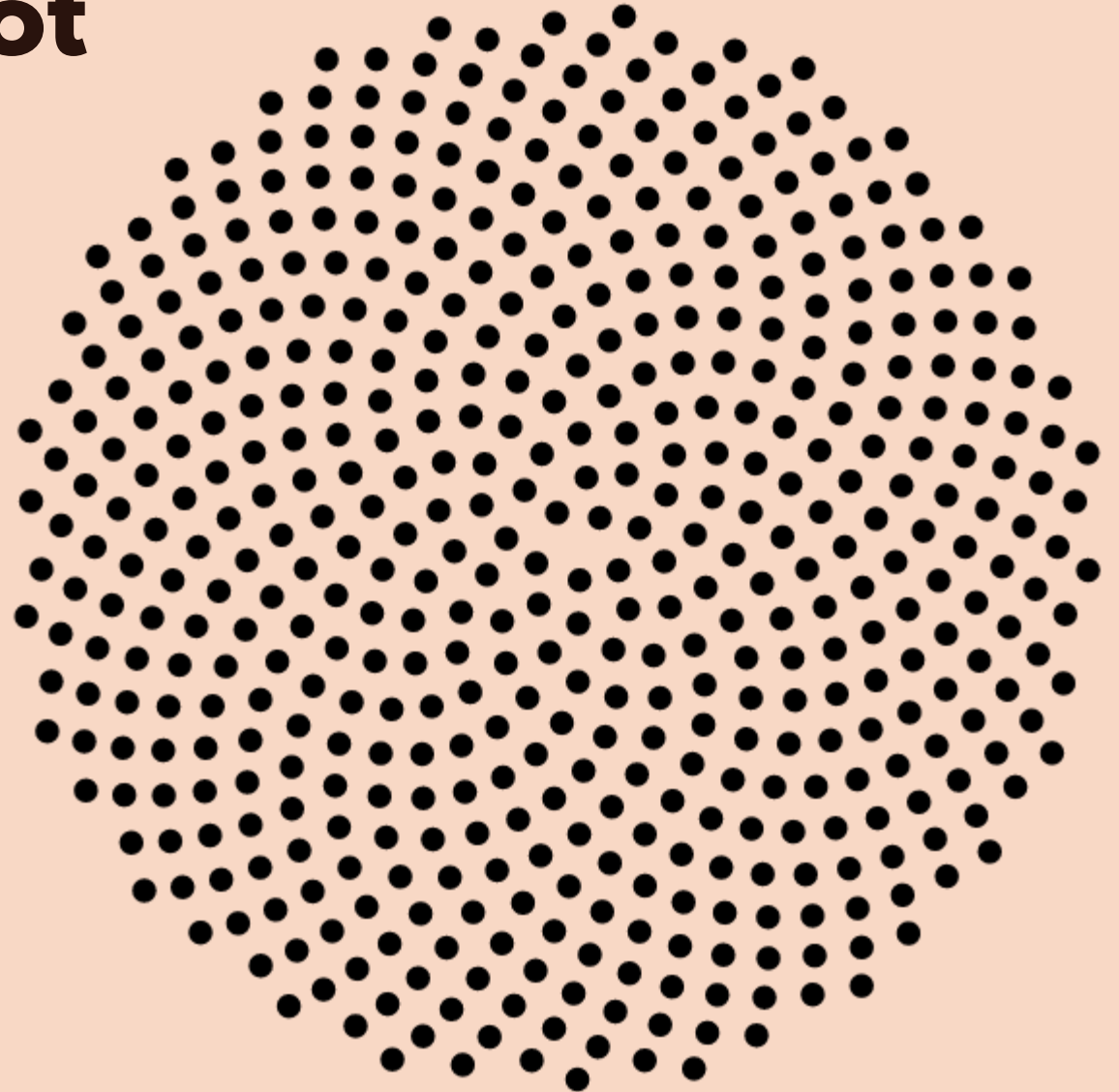


Dot

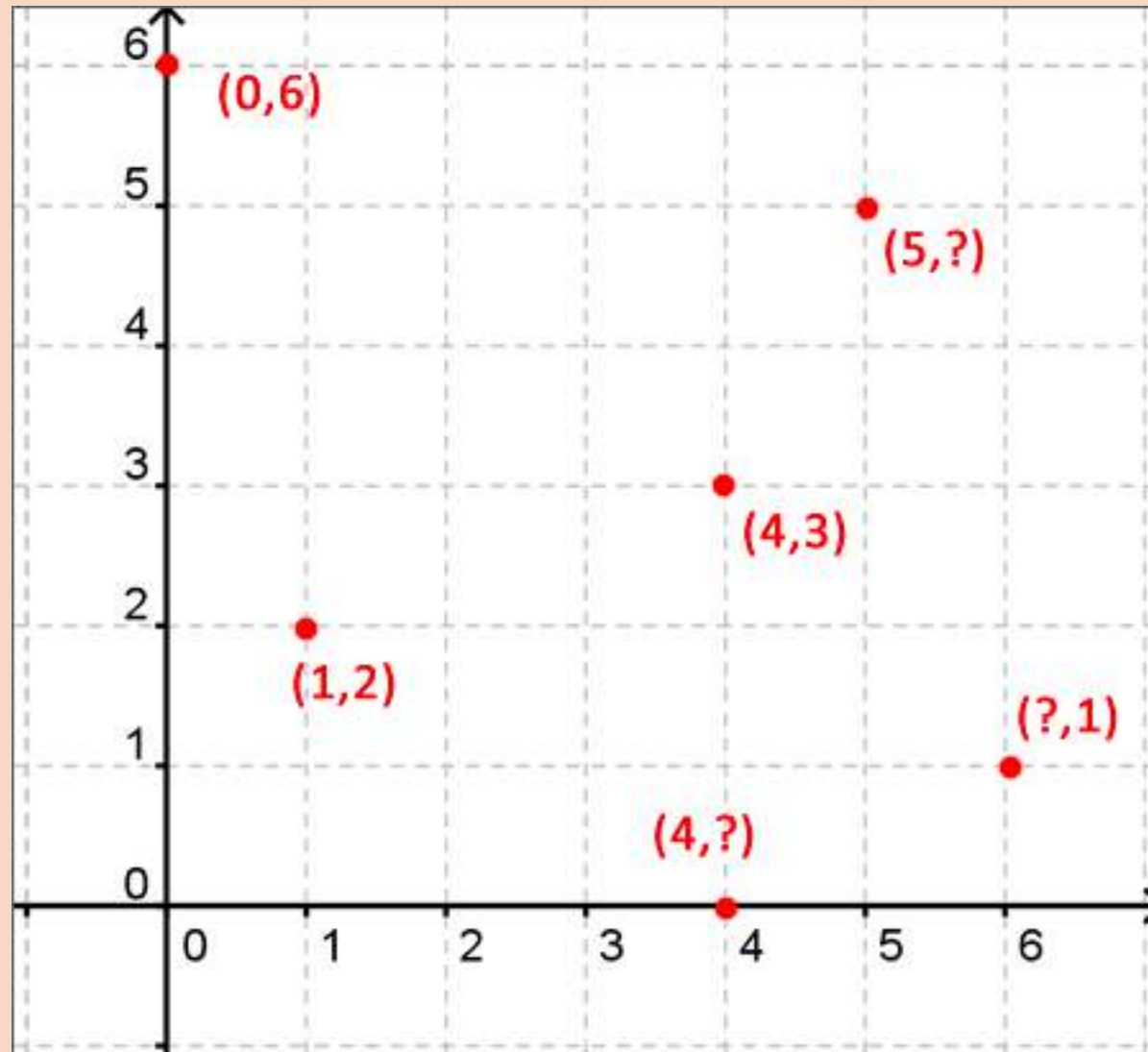
- Euclidean Definition:

A point is that of which there is no part.

- = no width, length, or breadth



In pure geometric terms...



A soldier in camouflage gear is kneeling on the ground, attending to a woman's leg. The woman is sitting on a red medical bag, and her leg is visibly injured with blood. The soldier is wearing a tactical vest and has a helmet on the ground next to him. The background is a war-torn environment with debris and smoke. The text "Application of DOTS" is overlaid in the center.

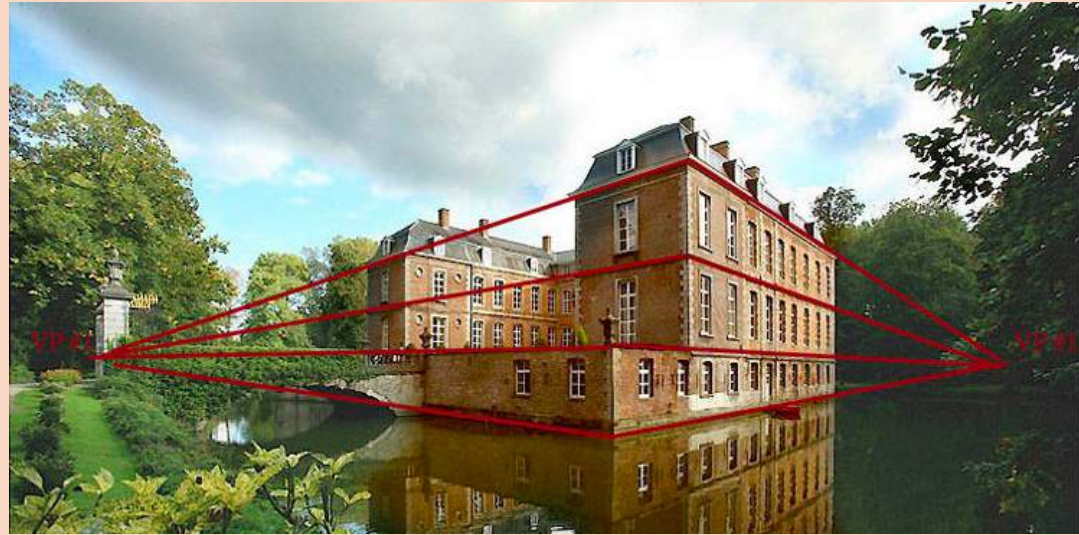
Application of DOTS

Vanishing Point

- The spot on the horizon line to which the receding parallel lines diminish.
- Create depth



One-point perspective



Two-point perspective

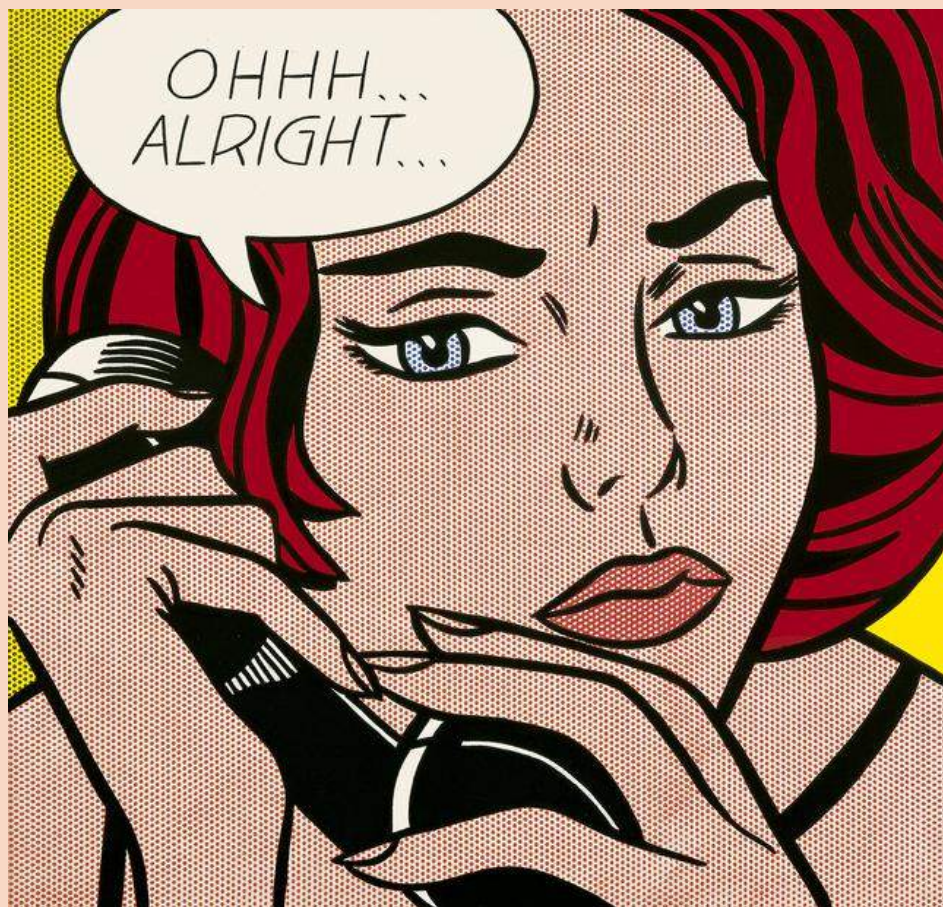
Art: Yayoi Kusama







Ben-day Dots



Art: Georges Seurat





LINE



Tan Lines from Typical Summer Activities

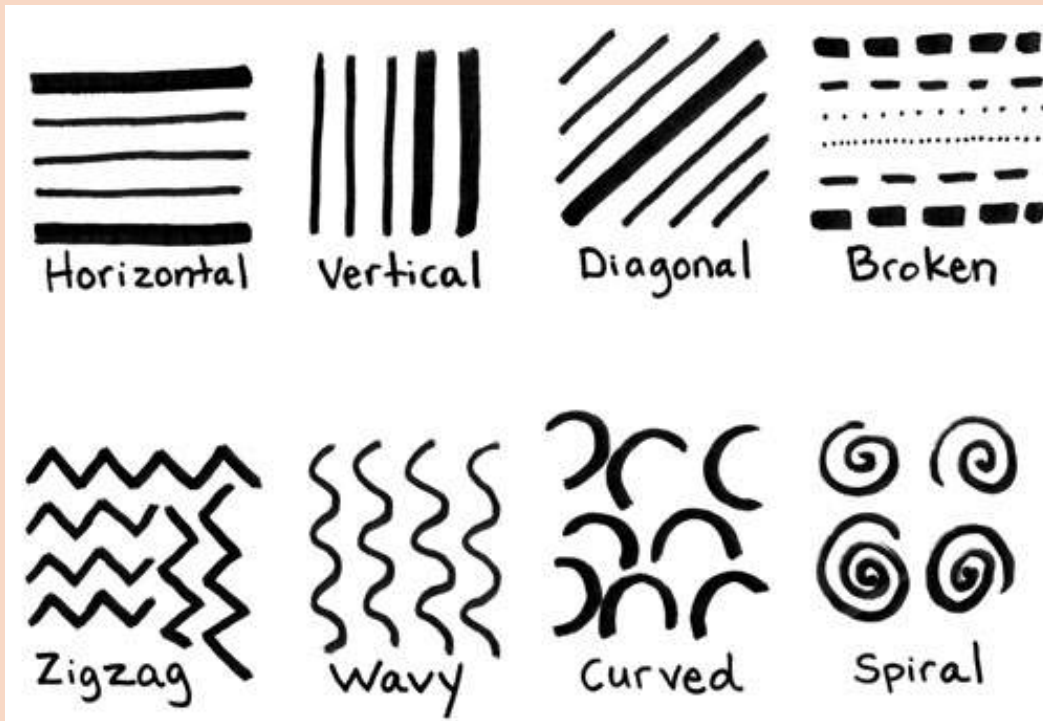


Line

- Euclidean definition: A line is a length without breadth.
- It is an infinite series of points
- Paul Klee: “*A line is a dot that went for a walk*”



Lines



- Guide your eyes.
- Graphically, lines exist in many weights; variation of thickness and textures.
- They can be straight or curved, continuous or broken

Horizontal Lines

- When objects are parallel to earth, they are in a state of rest
- This suggest a feeling of rest or repose



- Horizontal lines help give a sense of space.
- The lines delineate sections of the landscape, which recede into space.
 - Imply continuation of the landscape beyond the picture plane



Vertical Lines

- Communicate a sense of height because they are perpendicular to the earth, extending upwards toward the sky
- In this church interior, vertical lines suggest spirituality, rising beyond human reach toward the heavens.

Diagonal Lines

- Convey a sense of movement
- Objects in a diagonal position are **unstable**
- Because they are neither vertical nor horizontal, they are either about to fall or are already in motion.



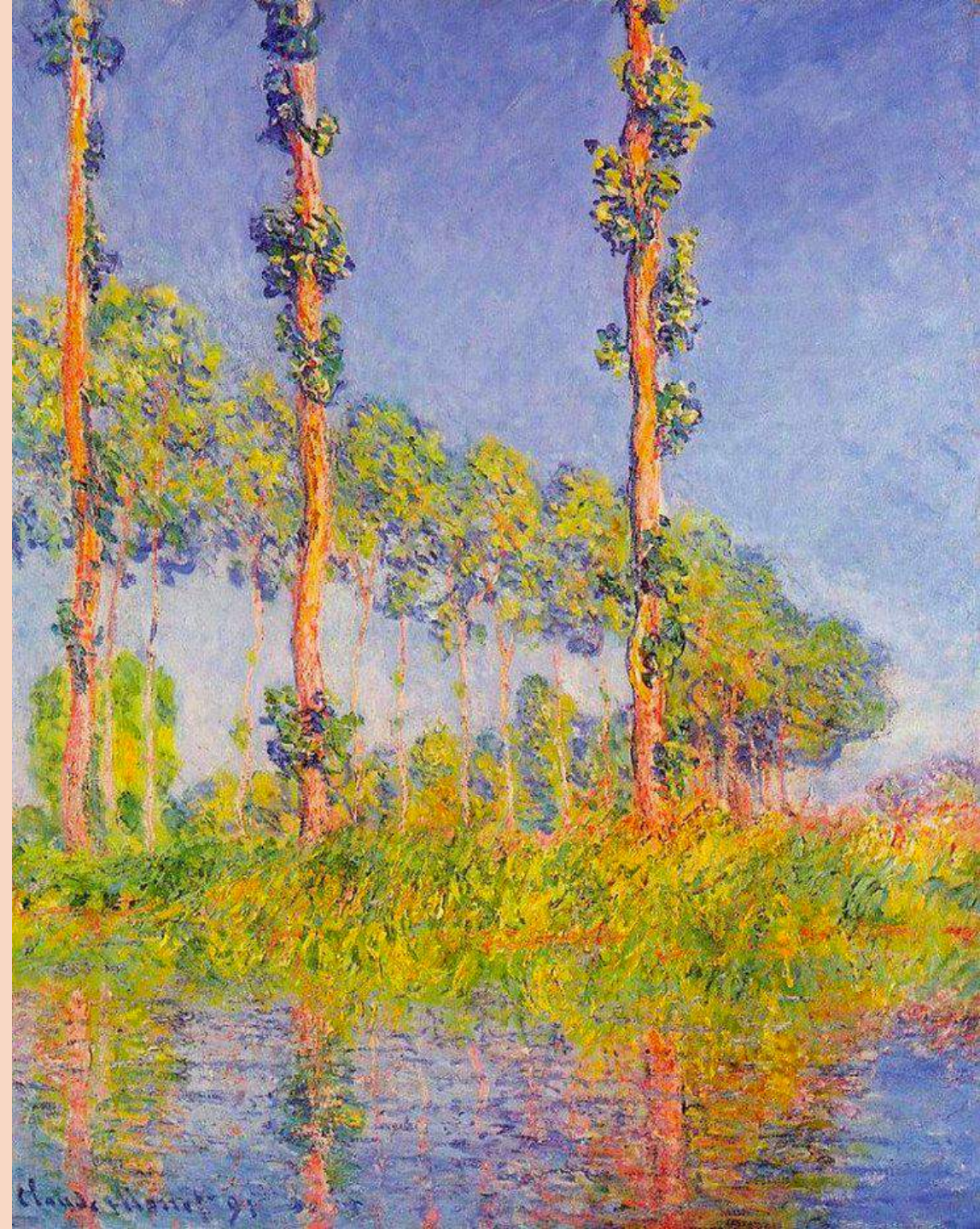
The angles of the ship and the rocks on the shore convey a feeling of movement or speed in this stormy harbor scene.

Curve Lines

- Convey energy
- Soft, shallow curves recall the curves of the human body
- Often have a pleasing, sensual quality and a softening effect on the composition.



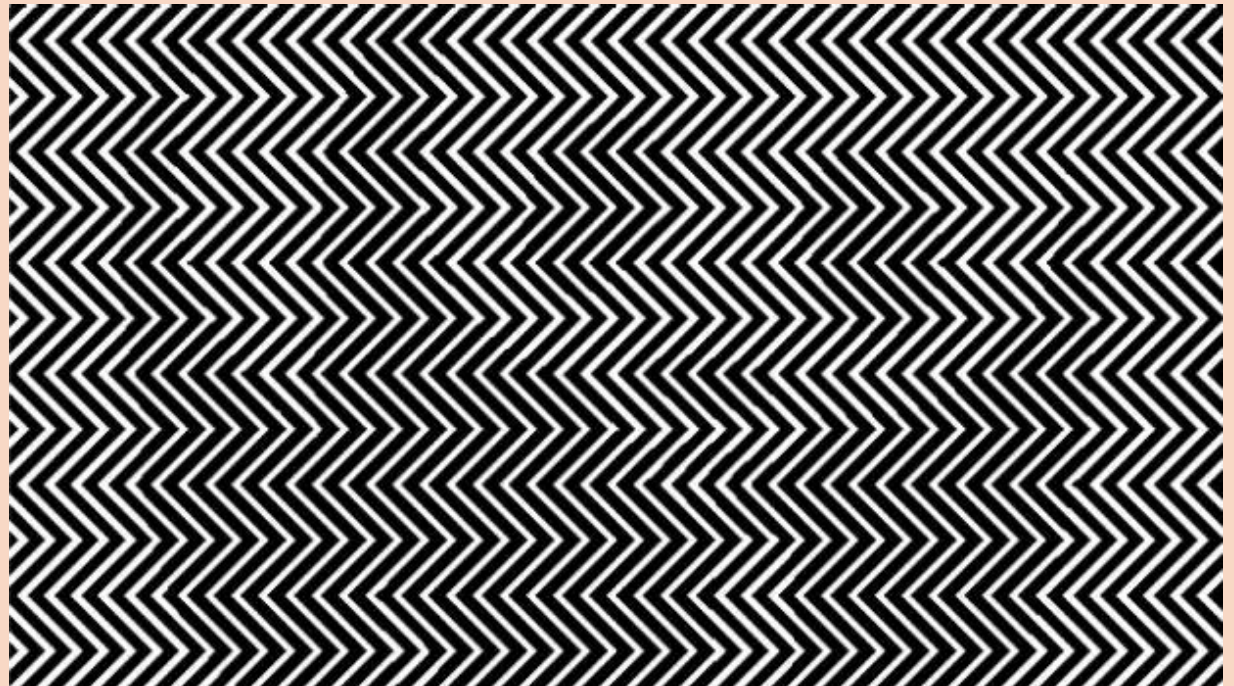
- The row of trees develops in a curve, rather than a straight line
- Curve creates movement and progression for the eye
- Leads the eye around the bend into the distance, as if inviting the viewer to follow

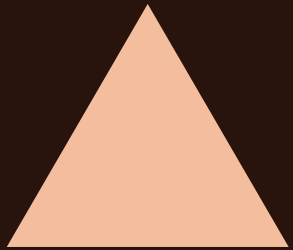
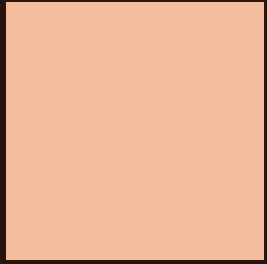
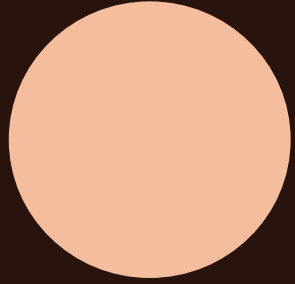




Optical Illusion

- By playing with the width and height of lines we can create **optical illusions**

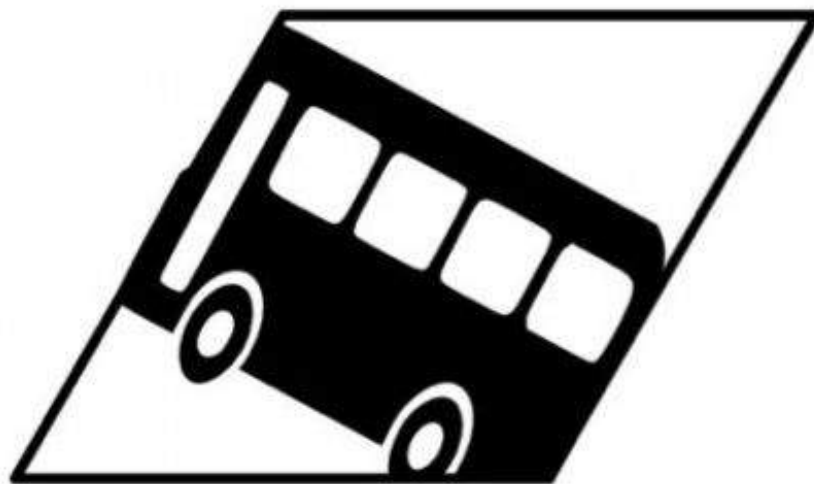




SHAPE



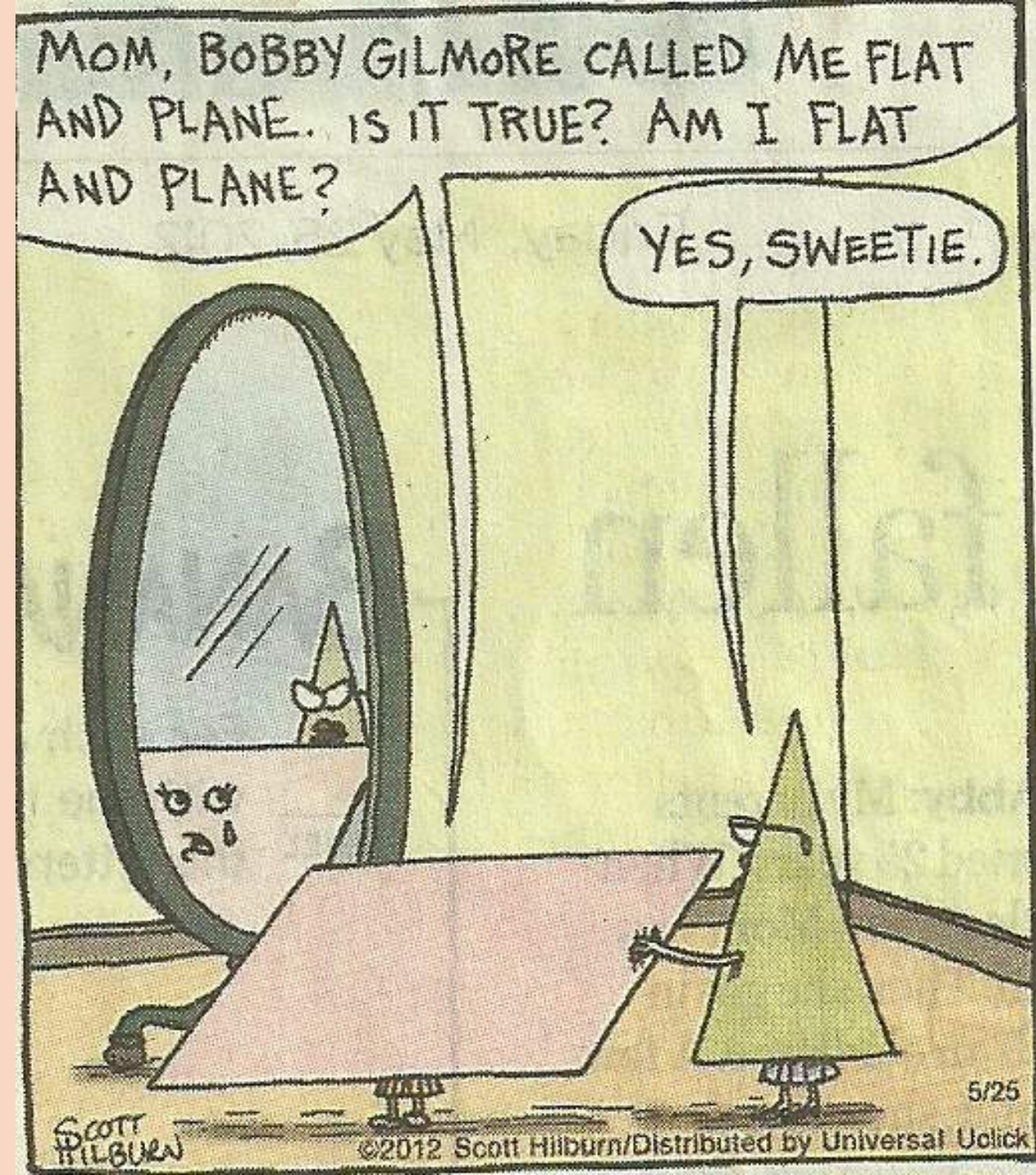
HE TOOK
THE RHOMBUS.



Why was the
Mathematician late for work?

Shape

- A surface is that which has length and breadth/ the path of a moving line
- Geometric shapes: When a form or shape has regularized contours
- 3 main geometric shapes; circle, triangle and square.
- Organic shapes: typically irregular or asymmetrical; often found in nature



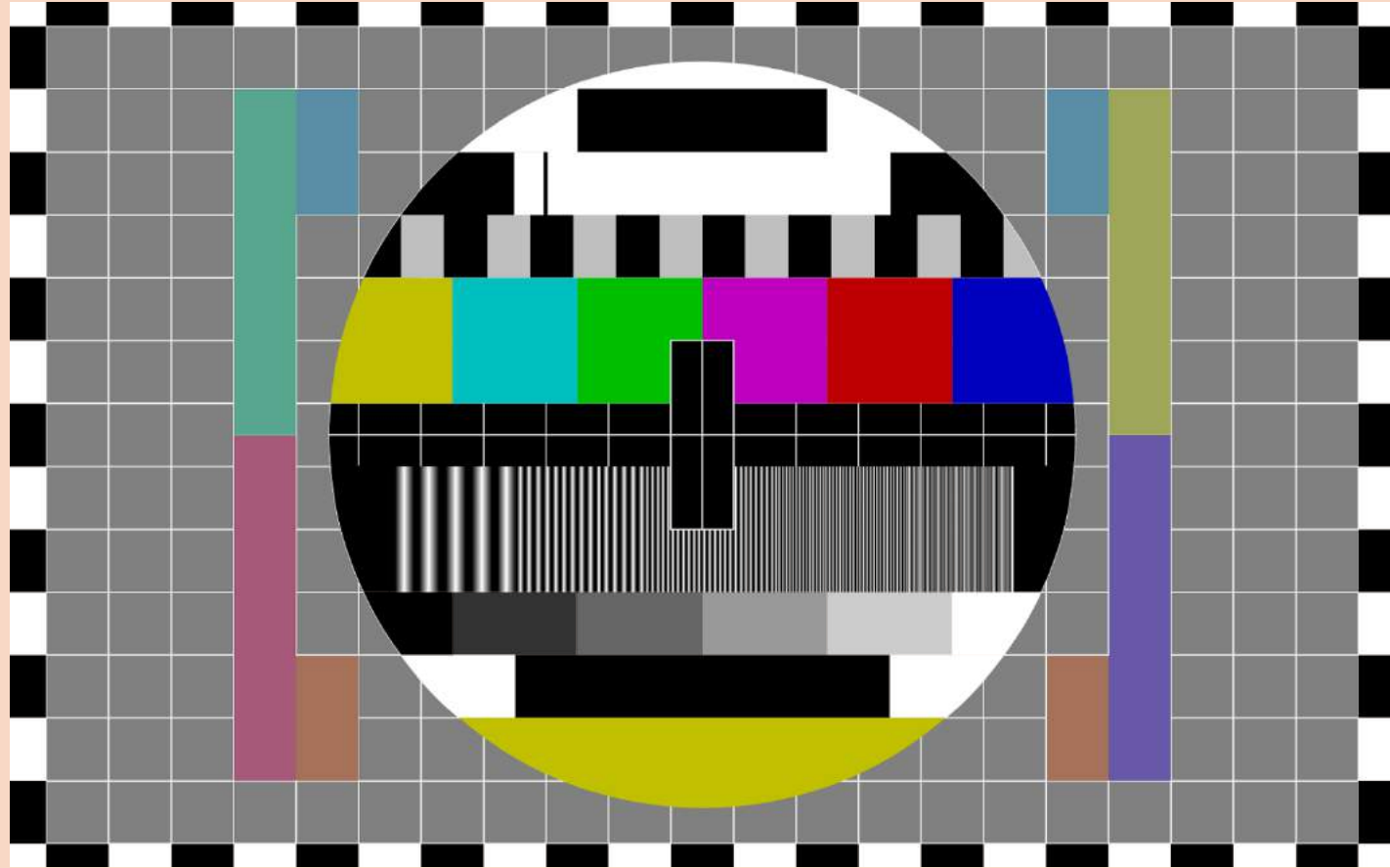
Everyday Shapes



Everyday Shapes



Everyday Shapes



Sculptures



- Yeo Chee Kiong (Singapore) “Series #02, ‘A Yoga and Pedicure DIY Session on the Beach’”
- Figures are shaped by bubble-like forms and cast in steel and resin in the colour of pink flesh.
- Plays with form and organic shapes



Cubism

- Fragmentation of form in cubism
- Both the outlines of the figure and its internal drawing have been broken down into geometrical elements.

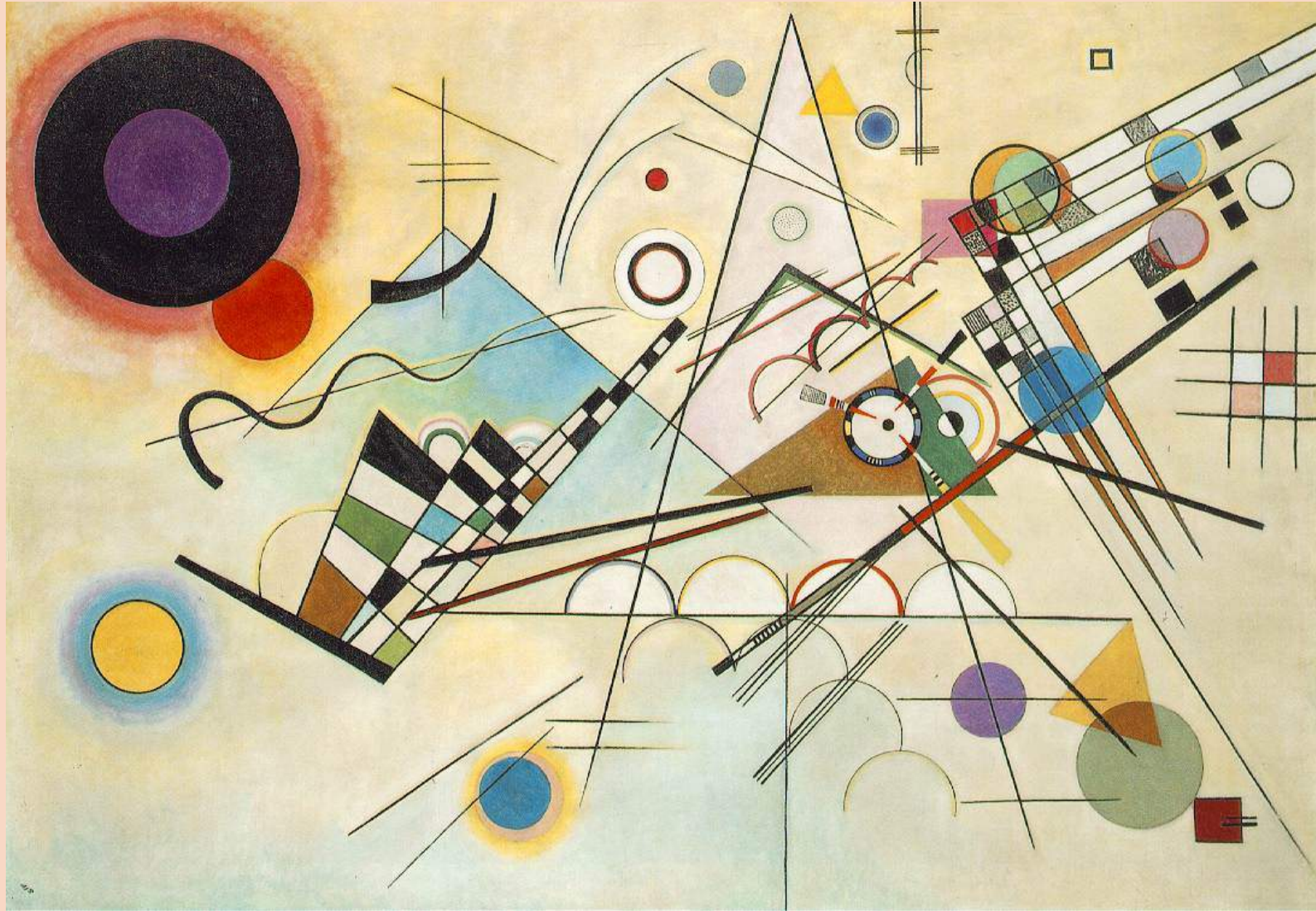
Dot, Line and Shape

- All 3 elements combine Patterns, Compositions (Art)
- Pattern: A regular repetition of lines, shapes, colors, or values in a composition





■ Henry Moore wallpaper designs



Composition VIII, Kandinsky, 1923.

THANK YOU :D

