

MEDIA ART NEXUS

by Shariffah Nur Alawiyah

content page

01— **theme research**

rising sea levels
dry spells & flash floods
deforestation & urbanisation
vector-borne diseases
haze

02— **visual direction**

narrative approach
moodboard
artist references
techniques & methodologies

theme research

The repurcussions
of climate change
in Singapore

p3

themes

Rising Sea Levels	Dry Spells/ Flash floods	Southeast Asian Haze
Due to Singapore being a low-lying island, sea level rising is the most immediate threat where 30% of our island being less than 5m above Singapore Height Datum.	Global warming has resulted in periods of droughts and sudden intense rainfalls which affect the reliability of our water resources and overwhelming our drainage system.	Caused by illegal agricultural slash and burn method of clearing land and selling it illegally. Occurs mainly in Indonesia which severely affects its neighbouring countries.

theme research

The repurcussions
of climate change
in Singapore

p 4

themes

Vector-borne Diseases	Deforestation, Flyways & Urbanisations
<p>The rise in temperature could potentially lead to a rise in vector-borne diseases that thrive in warmer temp.</p> <p>This could threaten public health.</p>	<p>The rising temperatures, deforestations and urbanisations in Singapore meant that loss of biodiversity is higher than ever. Loss of wildlife homes are affected as we encroach into their space.</p> <p>Migratory routes across Singapore & Indonesia for birds to travel across are also affected with these clearing of lands, posing threat to a lot of bird species.</p>

theme research

Deciding on which
theme to choose

**Rising
Sea Levels**

**Dry Spells/
Flash floods**

**Southeast Asian
Haze**

**Vector-borne
Diseases**

**Deforestation, Flyways
& Urbanisations**

p5

theme research

Deciding on which
theme to choose

**Rising
Sea Levels**

**Dry Spells/
Flash floods**

**Southeast Asian
Haze**

**Vector-borne
Diseases**

**Deforestation, Flyways
& Urbanisations**

p 6

visual direction

approach, moodboards,
artist references &
techniques used

p7

approach

moodboard

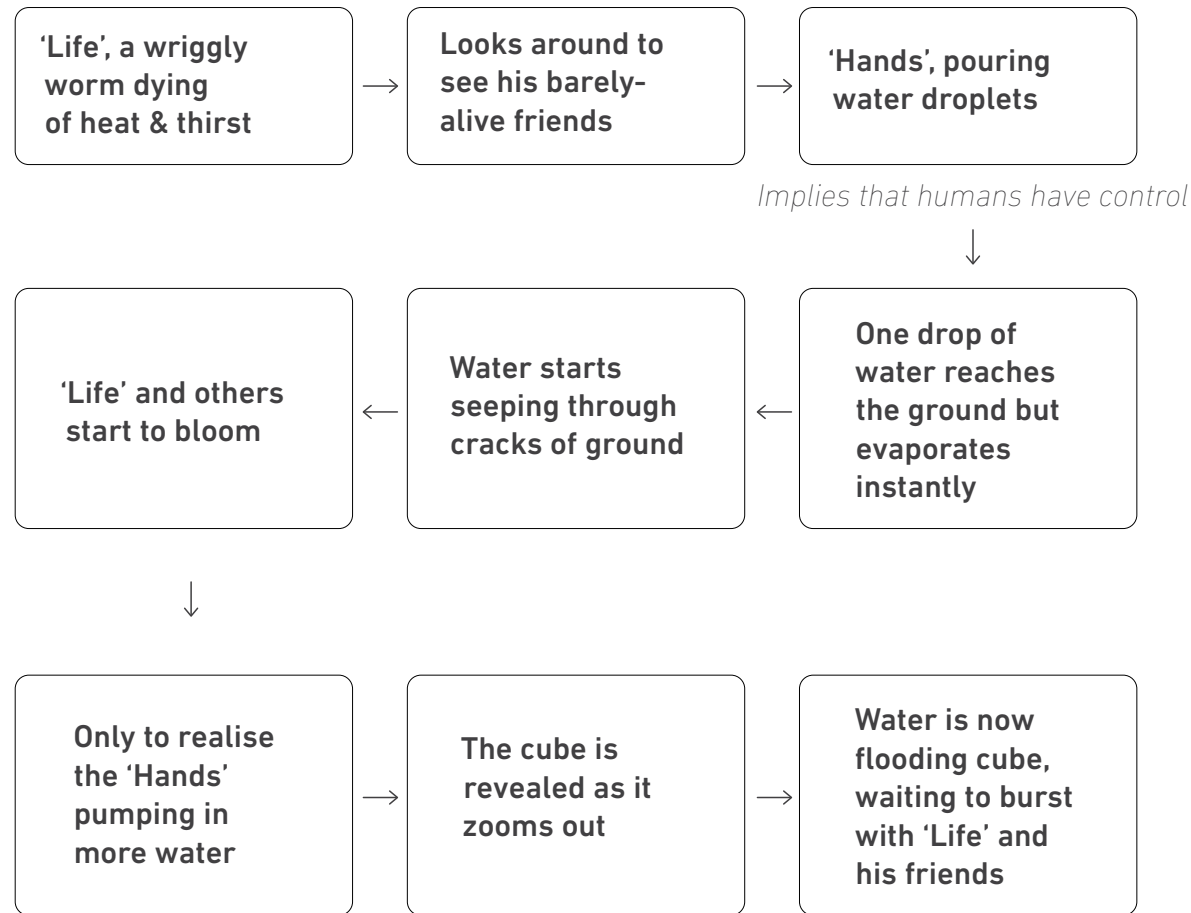
artist &
techniques

p 8

**Dry Spells/
Flash floods**

Dry Spells & Flash Floods

Portrays the reality of climate change through the lens of an abstract form, demonstrating an alternative perspective othering that of humans'



p9

approach

narrative, storyline, etc

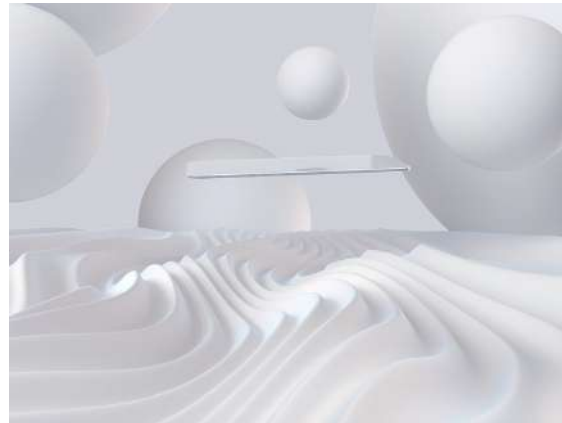
Approach #1: The journey of "Life" going through dry spells & flash floods represented in an abstract form with "Hands" as the invader

Dry Spells & Flash Floods

Johana Kroft: <https://foundation.app/@johanakroft>



Gleb Kuznetsov: <https://dribbble.com/glebich>



p10

moodboard

moodboard & artist reference

Approach #1

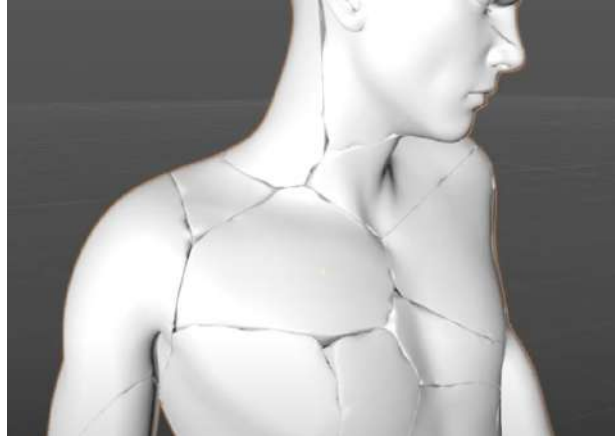
- *Colour*
- *Monochromatic*

Dry Spells & Flash Floods



water droplets falling:

3d modelling spheres and using metaball tool



cracks:

Voronoi fracture in Animate function



converting 2d to 3d

illustration from 2d form, to 3d modelling



softbody simulations:

Soft-body dynamics is a field of computer graphics that focuses on visually realistic physical simulations of the motion and properties of deformable objects

p1 1

techniques

helpful tutorials

Approach #1

Dry Spells & Flash Floods

Demonstrates the idea of dry spells to flash floods from lowest to highest intensity to create discomfort and urgency in imageries

Evaporation



Condensation



Evaporation



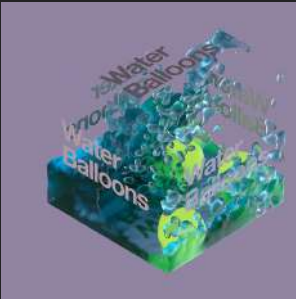
Condensation



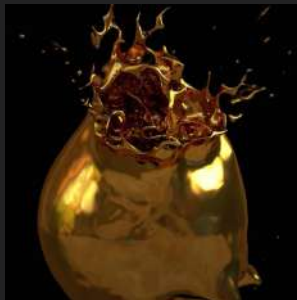
Precipitation



Collection



Precipitation



Collection



p12
approach

narrative, storyline, etc

Approach #2: The depiction of the water cycle, reimagined through the lens of extremity

Lowest
Intensity

Highest
Intensity

Dry Spells & Flash Floods

Luke & Morgan Choice: <https://www.instagram.com/velvetspectrum/>



George Stoyanov: <https://www.instagram.com/georgestoyanov/>



p13

moodboard

moodboard & artist reference

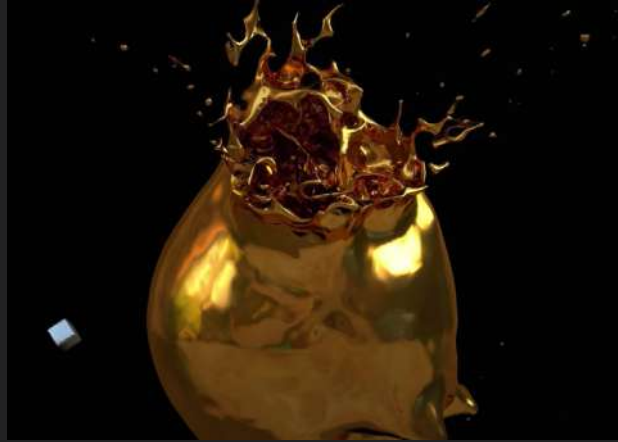
Approach #2

- *Soft & Calm*
- *Strong & Colourful*

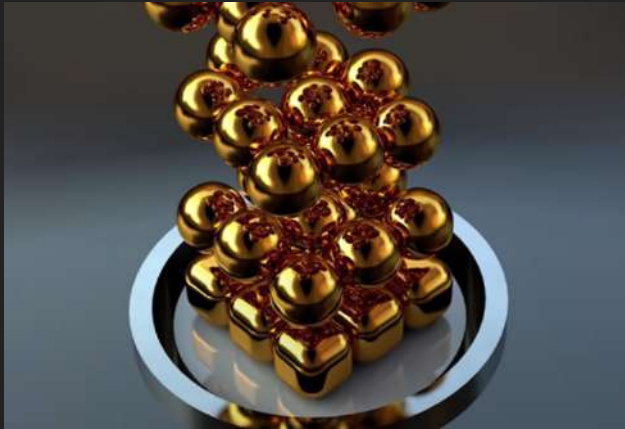
Dry Spells & Flash Floods



water droplets evaporating:
liquid & water simulation



water explosion:
splash animation



evaporating balls:
emitter, turbulence, etc



water flowing in spherical shape:
real flow plugin

p14

techniques

helpful tutorials

Approach #2

p15

Virus Infestation

Virus infestation

Depicts the disappearing security we're facing in this current times where increasing temperatures may lead to frequent virus outbreaks. Though concept is exaggerated, it's meant to create urgency.



p16

approach

narrative, storyline, etc

*Inspired by: Sticky bomb scene in
The Incredibles*

*A form entrapped in a bubble,
protected from the outside.*

*Virus bomb comes from one side
of screen and latches onto box.*

*Protection bubble bursts and
bombards form with virus bombs.*

Virus infestation

Roman Bratschi: <https://www.instagram.com/romanbratschi/>



p17

moodboard

moodboard & artist reference

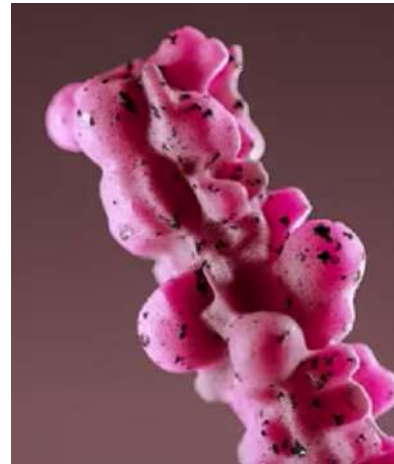
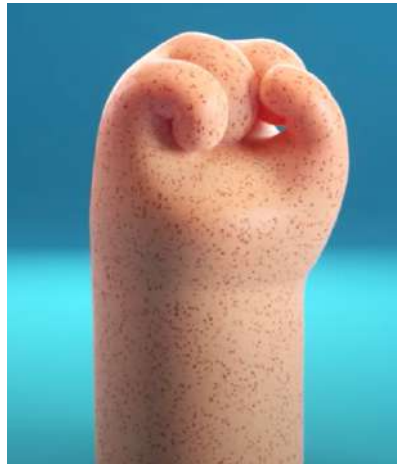
Virus bombs

- *Texture play*
- *Colours*
- *Forms*

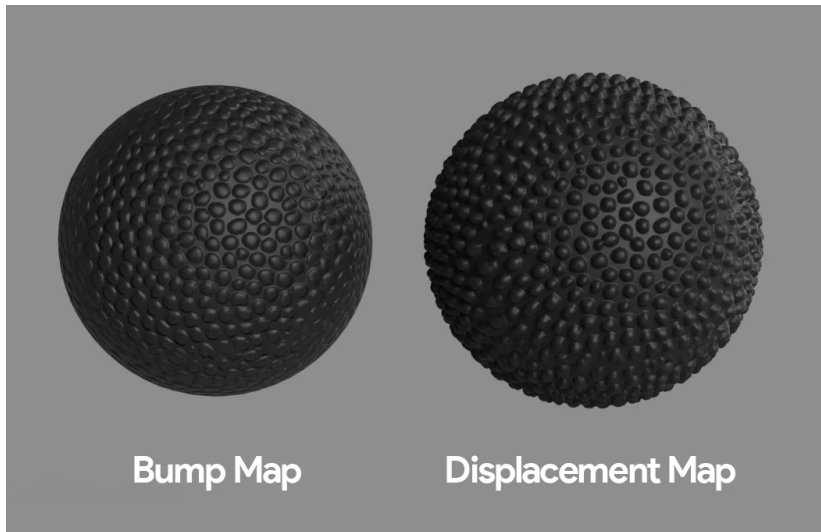
Virus infestation



texture mapping:
UV unwrapping



abstract renders



texture mapping:
exporting from c4d to keyshot to render

p18

techniques

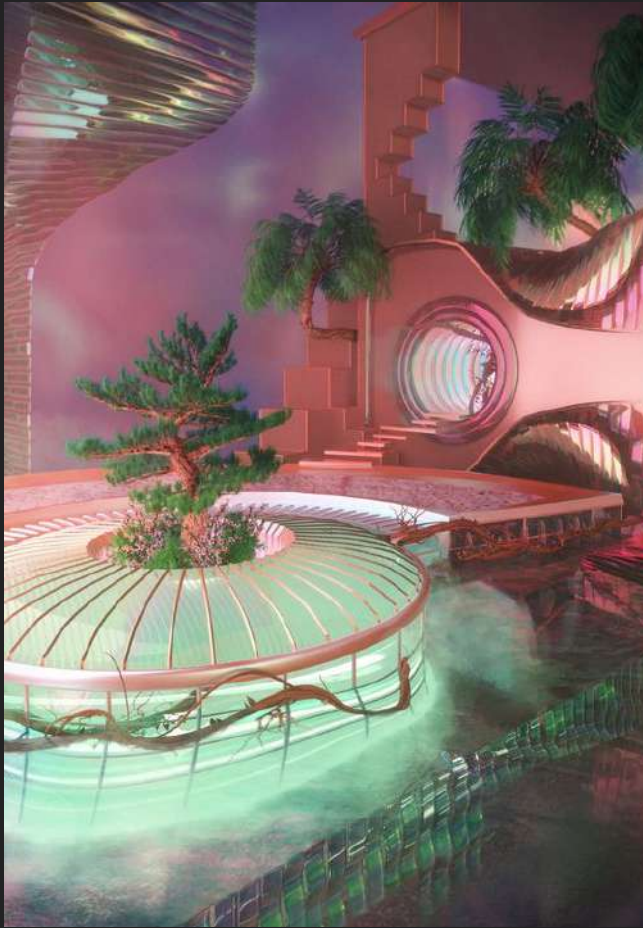
helpful tutorials

p19

Deforestation, Flyways & Urbanisations

Deforestation & Urbanisations

Thought-provoking as to possibilities of future, merging nature with man-made.
A way of living, reimagined.



approach

narrative, storyline, etc

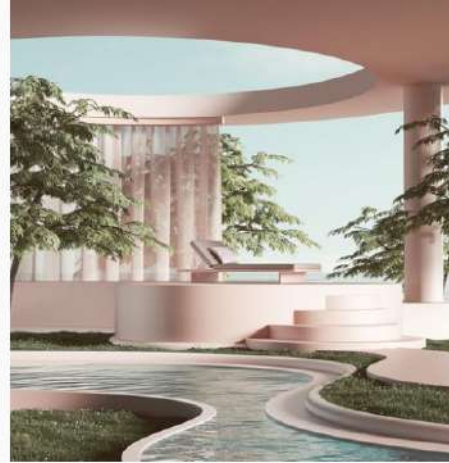
Approach #1: We live in an urbanised environment, surrounded by concrete walls.

Dreamscape provides an alternate reality where ideally, we could live amongst nature in our communal interior spaces in flats.

Plants acts as natural filters, cools down temperatures without AC, regulates air, natural healing to high stress environment.

Deforestation & Urbanisations

Peter Tarka: <https://www.instagram.com/petertarka/>



p21

moodboard

moodboard & artist reference

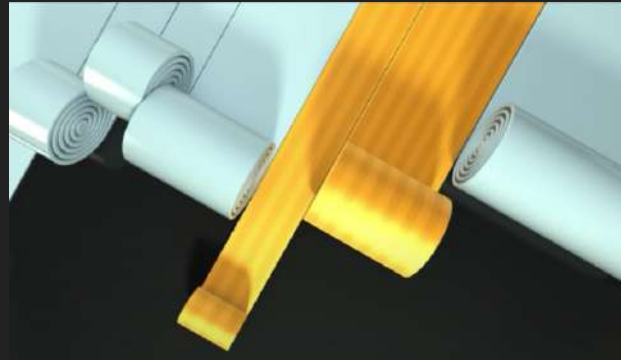
Approach #1: Realistic/Abstract

- Greenery
- Water features
- Flora and fauna
- Stone
- Open concept
- Shadow & Light

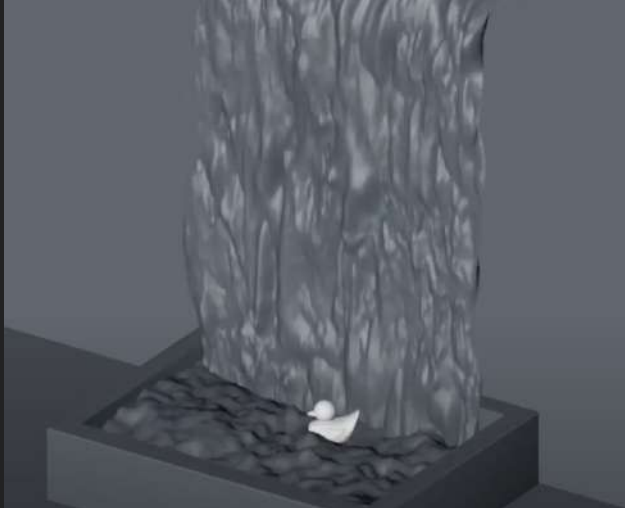
Deforestation & Urbanisations



abstract spline effect



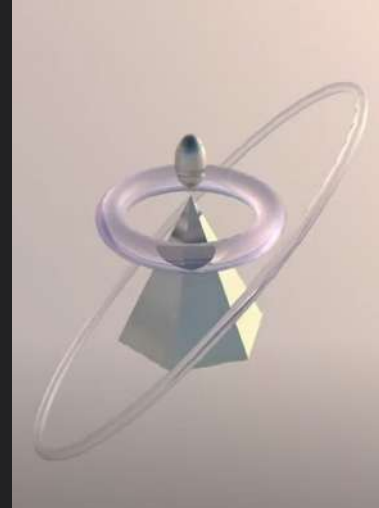
unroll/roll effect



waterfall effect



building landscapes



building abstract
elements

p22

techniques

helpful tutorials

Approach #1

Deforestation & Flyways

Evoke a sense of loss through attachment to character



p23

approach

narrative, storyline, etc

Approach #2: Depicted in abstract form.

Follows the story of a cute fluff ball from its decomposing in reverse, back to its journey across sea/land/air.

Deforestation & Flyways

Roman Bratschi: <https://www.instagram.com/romanbratschi/>



E.J. Hassenfratz: <https://www.instagram.com/eyedesyn/>



p24

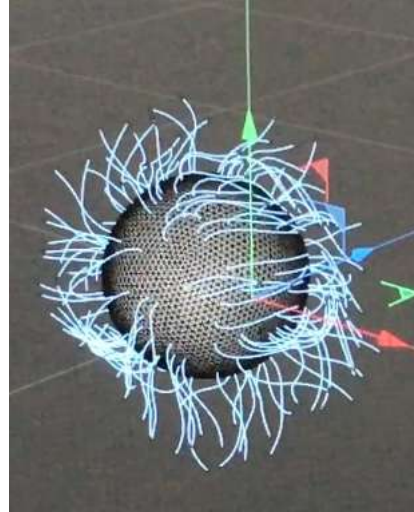
moodboard

moodboard & artist reference

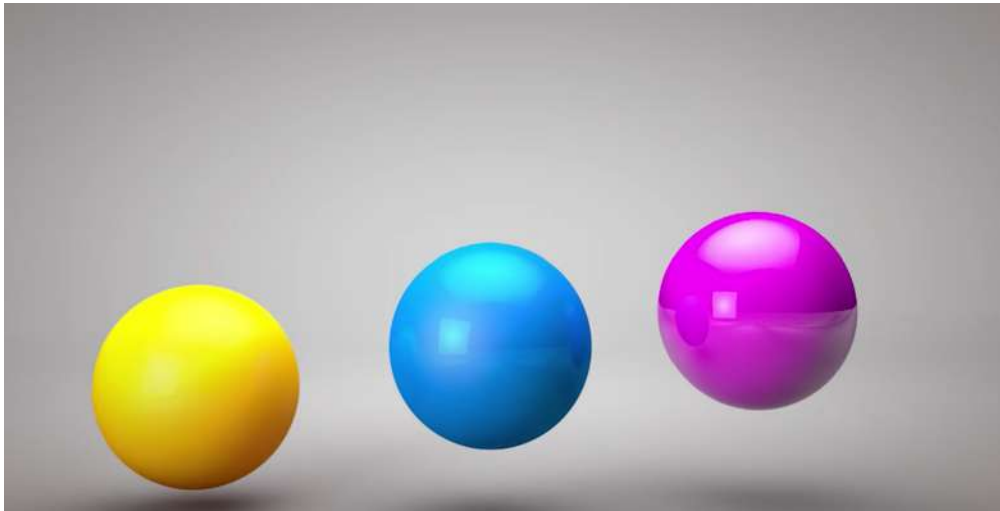
Approach #2

- Surrealistic elements
- Study tiny quirks of characters to adapt into fluff ball
- Fluff ball has no features, but have tiny little gestures

Deforestation & Flyways



fluff ball - my sad attempt



bouncing ball effect

p25

techniques

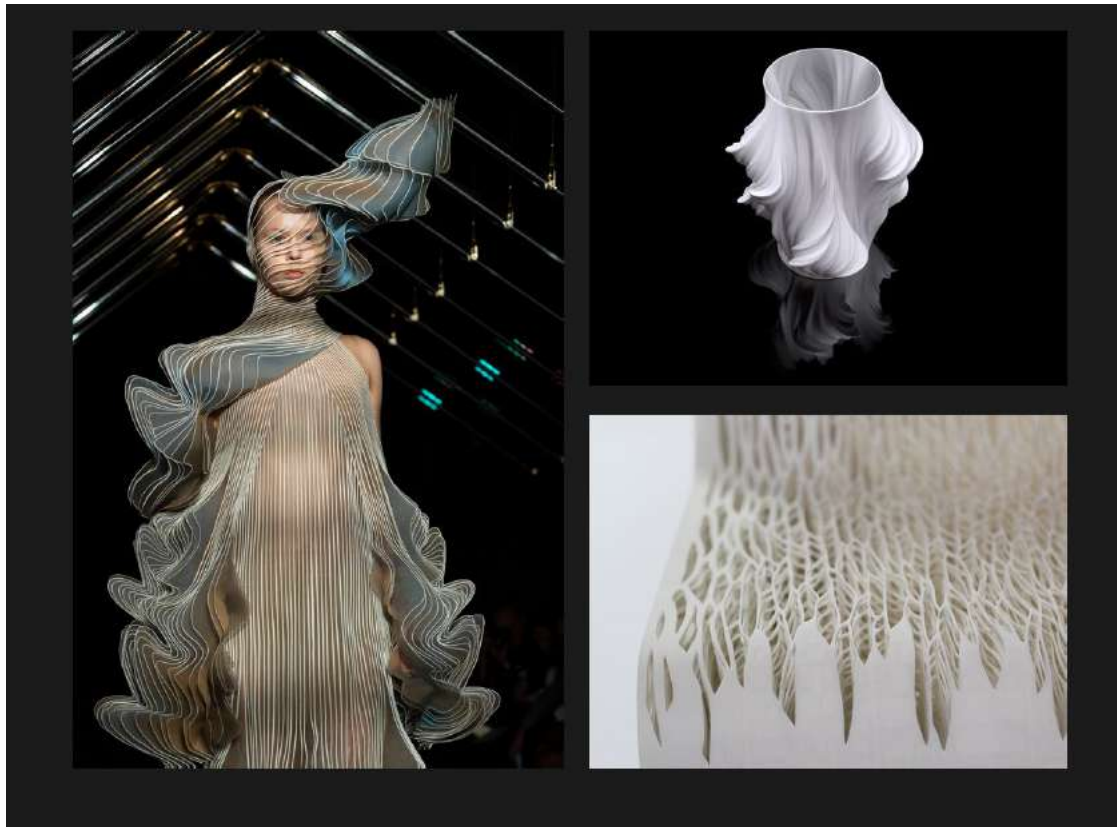
helpful tutorials

Approach #2

Deforestation & Flyways

Signifying life and death through mimicking movement & staleness

Inspired by: Ying Gao



p26

approach

narrative, storyline, etc

Approach #3

- *Movement signifies life*
- *Life such as coral reefs support abundant life and affects climate*
- *Coralreefs are essential to Singapore's biodiversity*
- *Protects coastlines from storms & erosion = key in islands*
- *Creating a series of movements through abstract forms*
- *'Compare and Contrast'*

Thanks friends :)