



Week 1 Final Project

Concept of Time

Week 1

By Yuki Tan

What is Time?

Time is relative and can vary from depending your speed through space

Time is the “fourth dimension”.
In space with length, width and height (showing location) and time providing direction, though only moving forward.

XYZT

horizontal (X), vertical (Y),
depth (Z) and time (T)

Interactive
installation by
Multimedia
choreographers
Adrien M and
Claire BT.



Time is not real! A human construct to differentiate between our perception of now and the past.

It is a theory that it is an illusion made of human memories. The law of physics are symmetric ultimately meaning that time could easily move in a backward direction as it does forward.

Time is Money!

Time is Linear!

Time is a non-linear!
It's a loop!

Time is...

Time could be...

A loop or linear

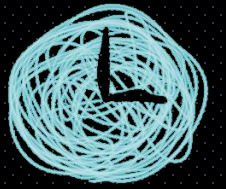
Everyone's perception of time is different!

It could even be a Jeremy Bearimy!



Jeremy Bearimy

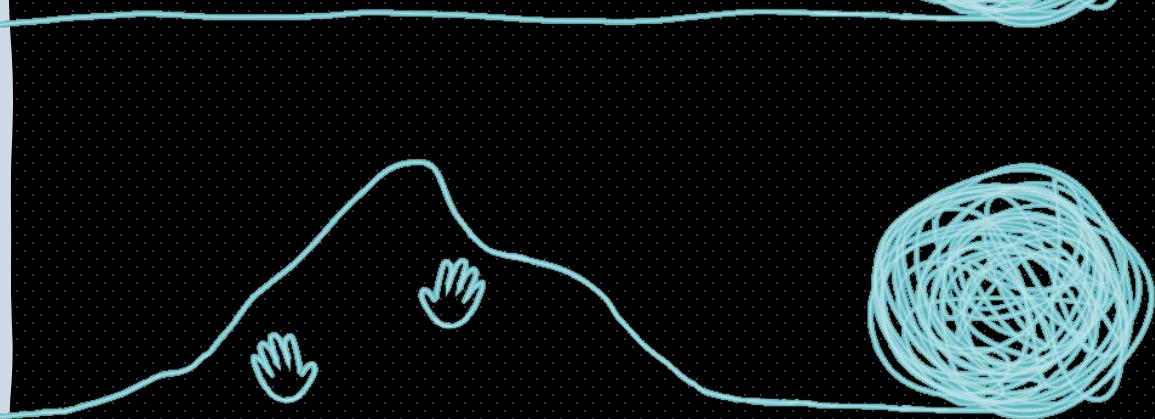
Concept



SLIGHT ANXIETY
THAT TIME MAY
BE RUNNING OUT



YOUR TIME



A simple minimalistic interactive to express not knowing when your time may end (representing the idea of a life thread) and how everyone uses their own time.

Create your own Jeremy Bearimy :D

Inspiration:

The Good Place

Plug & Play

Jeremy Bearimy

