

THROUGH THE EYES OF

kinetic beasts.

URCHIN CRAB

SEA FIRE URCHIN

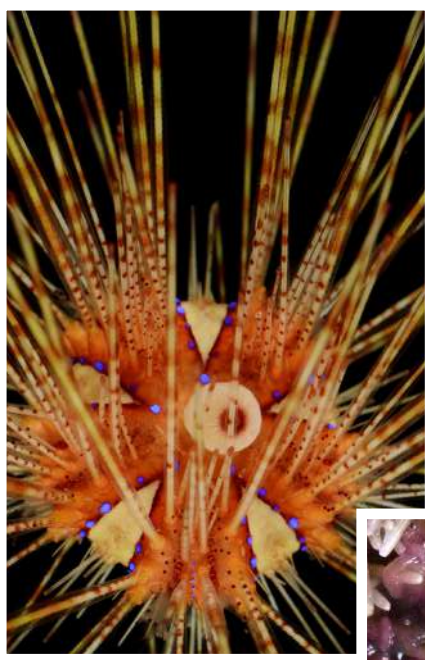
G 0 6
Y I N G H U I
N I K I

astropyga radiata

Iridescent blue dots

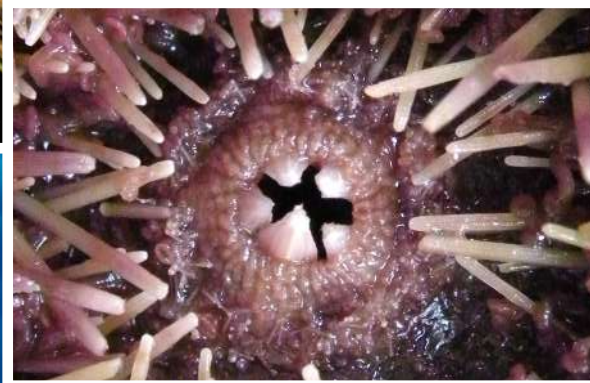
line the spaces alongside the urchin's spines, serving no particular purpose other than to look pretty.

Left: A close-up on the urchin's iridescent blue dots.



With a plate structure known as 'Aristotle's Lantern',

their beak-like mouth has specialised muscles that allow it to scrape and pull away at plant and animal matter to eat.



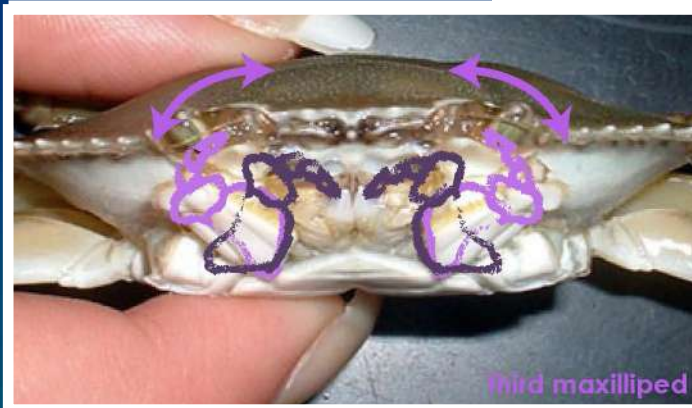
Right: A close-up on the mouth of the urchin. Five plates are arranged in 'Aristotle's Lantern'.

Antenna Antennule

covered in chemosensory hairs that are permeable to a variety of odour molecules; allowing the sense of smell and taste.



Top: Antennule flicking movement diagram

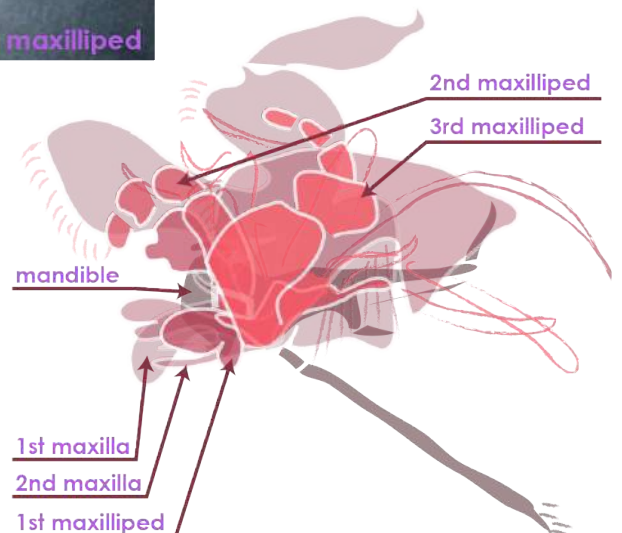


Right: Third maxilliped of Crab's mouth and movement

Bottom: Diagram of crab's layered mouth

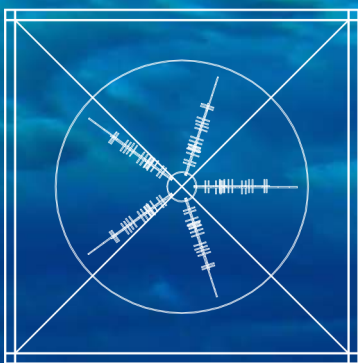
Appendage Layers

The actual mouth - mandible or 'teeth' is covered by many layers of appendages.

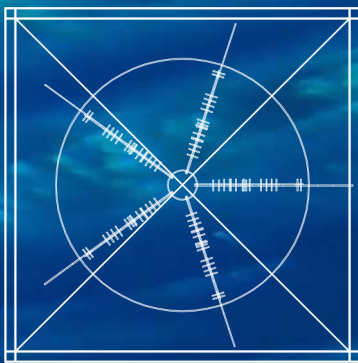


dorippe frascone

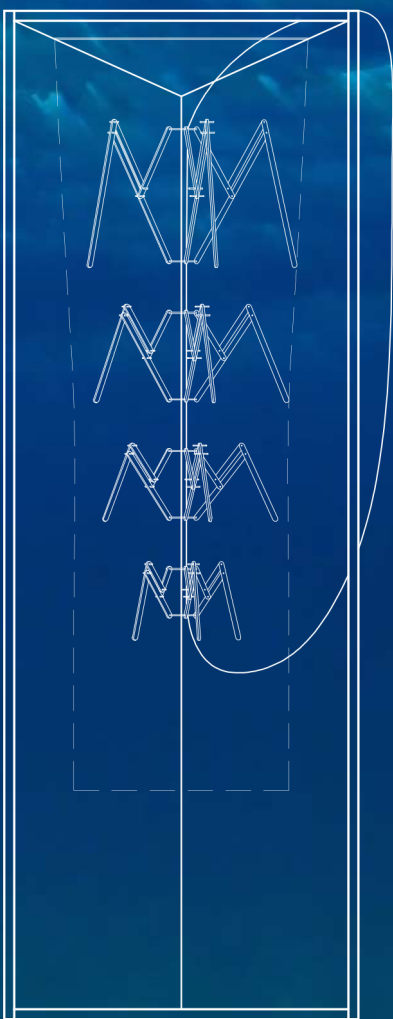
technical drawings



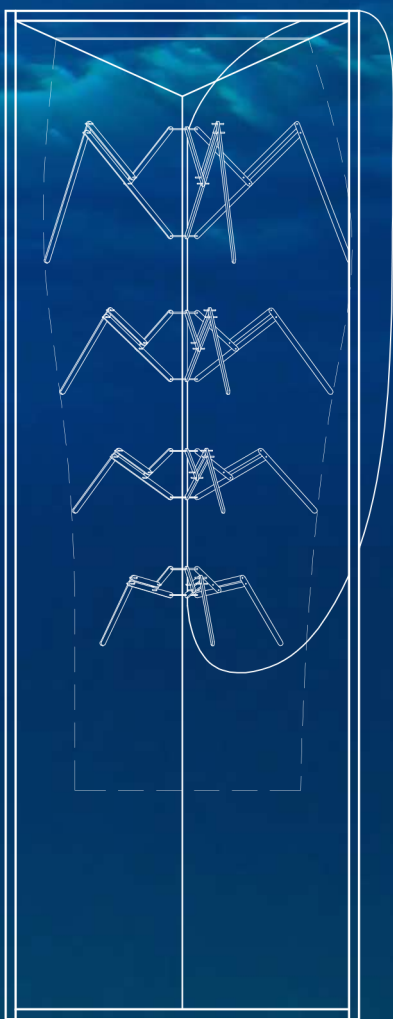
PLAN (CLOSE)
1:15



PLAN (OPEN)
1:15



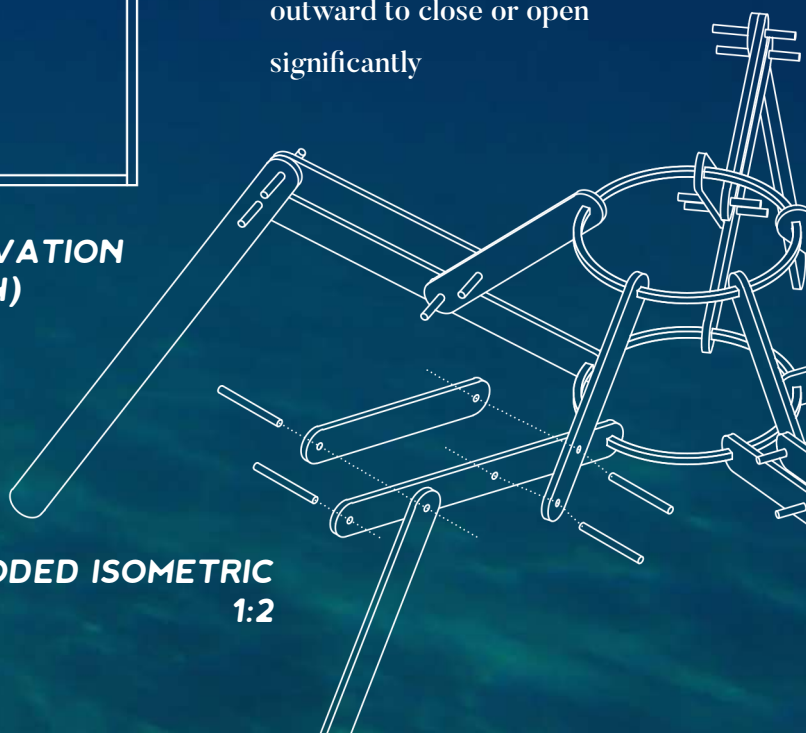
FRONT ELEVATION (CLOSE)
1:15



FRONT ELEVATION (OPEN)
1:15



Usage Instructions:
pull loose string inward or outward to close or open significantly



SMALLEST UNIT EXPLODED ISOMETRIC
1:2

artist impression - chandelier

